



baumit.com

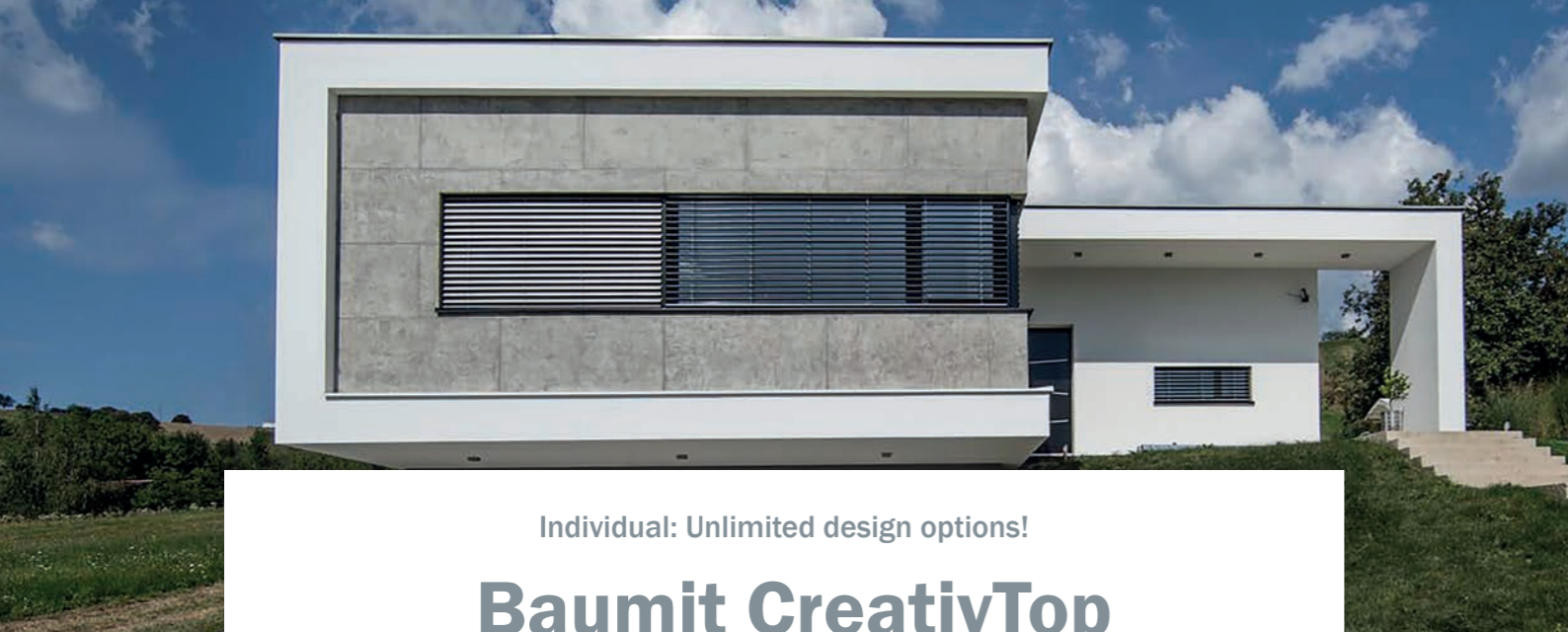
**PROCESSING POLICY**  
STATUS 1/2023



# Baumit CreativTop

Unlimited Design Possibilities

Baumit. Ideas with a future



Individual: Unlimited design options!  
**Baumit CreativTop**

Baumit CreativTop opens up unlimited possibilities for the creative design of façades. This results in individual structuring options for unique surfaces. From classic render structures to unusual wood and concrete looks.

- Endless design possibilities
- Particularly low in pollution
- Creative, colourful and unique finishes



**Visuals you can feel**

Coloured and ready to use, Baumit CreativTop invites you to creatively design unique facades. With Baumit CreativTop, craftsmanship is given modern opportunities to present old structures and techniques in a contemporary way. Thanks to its diverse design options, this puts the focus back on craftsmanship and thus becomes a tool of the craftsman.

Anyone who appreciates the almost unlimited possibilities of the Baumit Life colour system will be even more enthusiastic about Baumit CreativTop. Exterior walls not only look individual by choosing the right colour, but also feel individual.

**Fascinating looks for EWI**

Replicate the style of countless materials with Baumit CreativTop. Baumit EWI systems and individual designs are therefore technically low-maintenance and can be implemented in practically any style.

The five available grain sizes from Max to Silk enable unique results:

- Baumit CreativTop Max (trickle throw optics)
- Baumit CreativTop Trend (max. particle size 3 mm)
- Baumit CreativTop Fine (max. grain size 1 mm)
- Baumit CreativTop Pearl (max. particle size 0.5 mm)
- Baumit CreativTop Silk (max. particle size 0.2 mm)

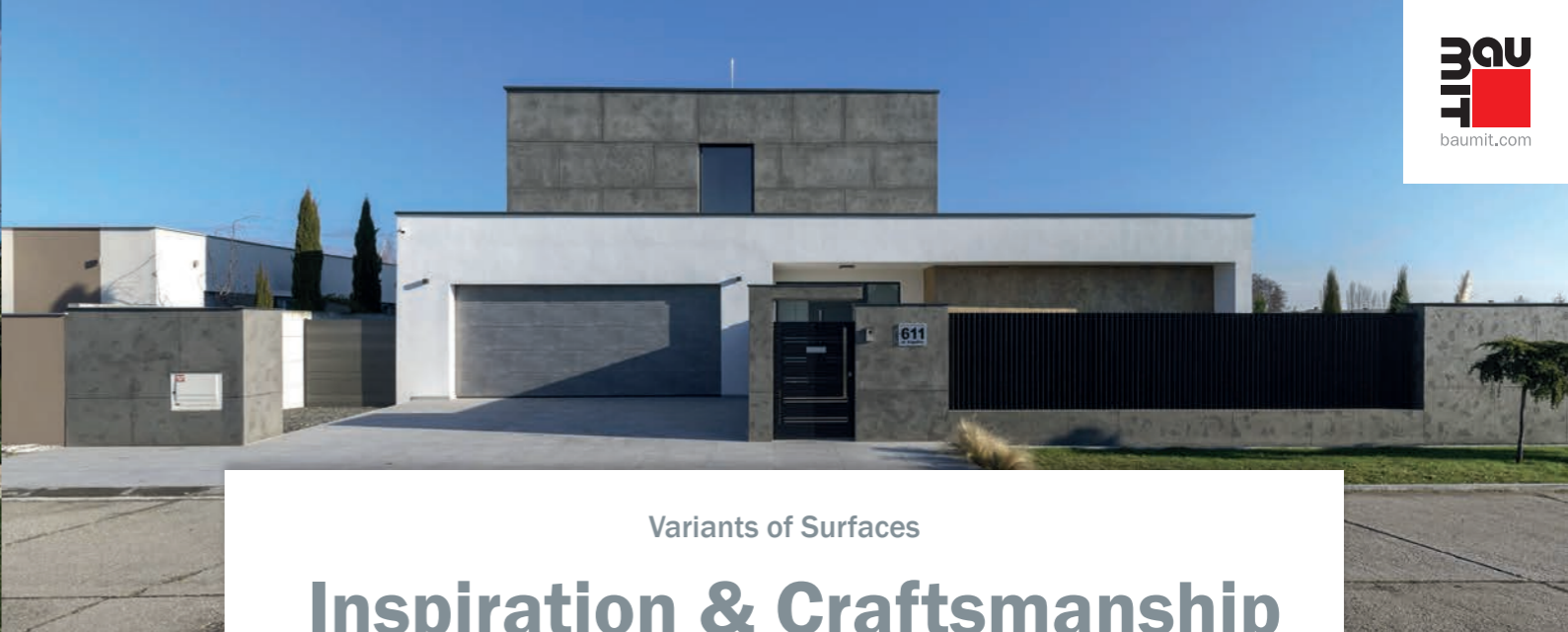
**Drypor Effect**

Baumit CreativTop comes with a formulated innovative filler, which, like a coral, has a very large surface and penetrates an extremely fine microstructure which causes the Drypor effect. This results in rapid drying due to raindrops beading off it, absorption of moisture from dew and rapid re-drying of the surface. Additionally, this ensures particularly low-soiling facades and provides an increased protection against algae and mushrooms.



**Shades of White**

Baumit CreativTop is also available in the "Shades of White" colour line. Building on the Baumit Life range, an additional 12 unique shades of white were developed to enable creativity in the world of white as well.



Variants of Surfaces  
**Inspiration & Craftsmanship**



Rust effect



Wood effect



Concrete effect



Spray technique



Brush technique



Sandstone effect



**Baumit CreativTop**

Ready-to-use, silicone resin-reinforced modelling render for outside for creative façade layout.

Available in Baumit Life Shades - see pages 19-21. Consumption is dependant on the application technique used.

Form of delivery: Bucket 25 kg



Baumit CreativTop

## Structure & Character

Structure gives a façade its unmistakable character. The alternation of rough and smooth and seemingly different materials, which can be produced so cheaply, easily and low maintenance, is now almost unlimited.



Baumit CreativTop enables the implementation of creative and innovative processing techniques to achieve unique surfaces.

As this is high quality craftsmanship, slight differences in the finished surface are possible, especially when using multiple craftsmen. The processing techniques listed should serve as ideas and inspiration for individual techniques!



Baumit CreativTop is a processing finished, ready to use, silicone resin reinforced modeling render for outdoor creative facade design. Available in all Baumit Life colours with black numbers; (Max, Trend and Fine also with blue digits). The consumption depends on the processing technique! Observe the product data sheet!

For special refinement and effective full colouring, Baumit effect coatings are used. A special glittering of the facade or a metallic shine ensures unique and unmistakable facades.



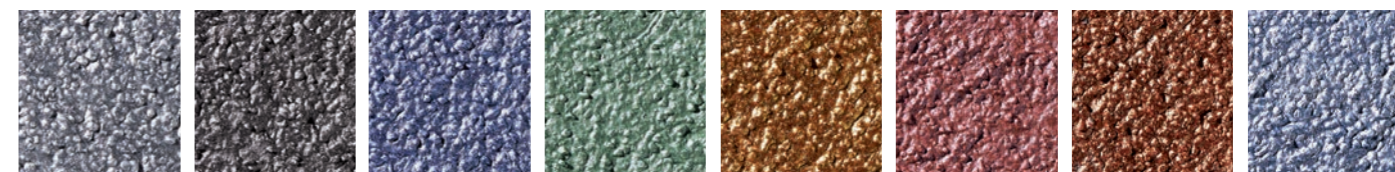
Unique Finishes

## Baumit Effect Coatings

Shimmering, metallic or glittering effects on the facade. Thanks to the use of innovative technologies, even more elegant and unique accents on your facade are possible with Baumit effect coatings. This is the world of Baumit glaze, glitter and metallic.

### Metallic - for an elegant shine

Designs with Baumit Metallic attract everyone's attention. The extraordinary colours can be creatively combined. Shiny metallic accents make every house unique. With Baumit Metallic, the facade will definitely be an eye-catcher, whether used extensively or only as an accent.



Titan 746M Platin 747M Saphir 748M Smaragd 751M Gold 753M Rubin 754M Bronze 755M Azurit 756M

### Glaze - unmistakable design

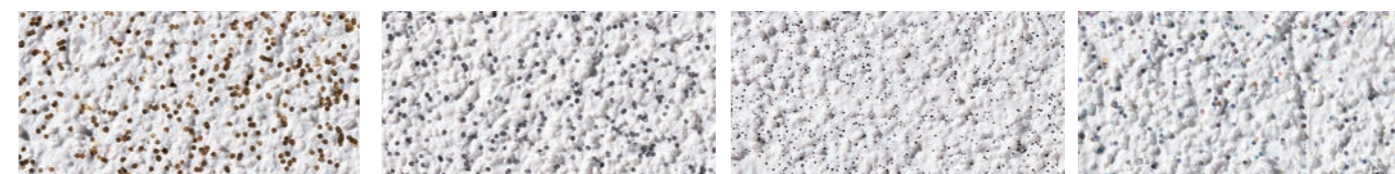
Baumit Lasur is a ready-to-use coating for decorative wall and facade design outdoors. With its matt formula, this glaze is particularly suitable for renovating old surfaces in a suitable style as well as for the harmonious refinement of modern facades. Ideal for unconventional individual facades.



Shine 725L Sensual 726L Impulse 727L Gentle 728L Solid 729L Mystic 730L Fresh 731L Casual 732L Placid 733L Faith 734L Cosy 735L

### Glitter - a touch of sparkle

Glitter is a transparent, dispersion-based coating with metal glitter. There is a choice between golden, silver and iridescent metals, with a finer or somewhat coarser look. Depending on the incidence of light, the facade always gets a different look.



Gold 771G Silver 773G SilverFine 774G Rainbow 775G

Baumit CreativTop

# Modern Look With Concrete

Fair-faced concrete on the facade with all the advantages of full thermal insulation?  
 A building shell that combines energy efficiency with design?  
 Because what looks like concrete isn't. This is a thermal EWI system with a deceptively real concrete look.

- Steel trowel
- Plastic float
- H Rule
- Sanding board
- Lambskin roller
- Sponge board
- Fine sponge

**Notice:**

Field boundaries are to be defined in advance and a joint plan drawn up. The maximum field size of the individual sections is 10 m<sup>2</sup>.



## Material

CONCRETE LOOK 1			CONCRETE LOOK 2		
Baumit CreativTop Trend	0019	ca. 3.0 – 3.5 kg/m <sup>2</sup>	Baumit CreativTop Trend	0019	ca. 3.0 – 3.2 kg/m <sup>2</sup>
Baumit CreativTop Pearl	0019	ca. 2.1 – 2.5 kg/m <sup>2</sup>	Baumit CreativTop Pearl	0019	ca. 2.1 – 2.5 kg/m <sup>2</sup>
Baumit SilikonColor/StarColor	0927	ca. 0.15 l/m <sup>2</sup>	Baumit SilikonColor/StarColor	0447	ca. 0.15 l/m <sup>2</sup>
Baumit Lasur	733L	ca. 0.08 – 0.1 l/m <sup>2</sup>	Baumit Lasur	734L	ca. 0.08 – 0.1 l/m <sup>2</sup>



**1** Baumit CreativTop Trend comes with a stainless steel trowel applied over the entire surface, coarsely rubbed....



**2** ...and the joint pattern according to the joint plan in created with the desired joint width. We recommend using an H Rule (thickness 6 mm). The maximum field size of the individual sections is 10 m<sup>2</sup>.



**3** After standing for 24 hours\* roughly sand the surfaces and joints with 16-grit sandpaper.



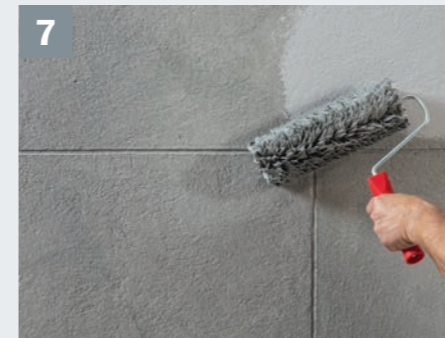
**4** Subsequently, the grain structure with Baumit CreativTop Pearl is filled all over the surface and smoothed again with light pressure without taking into account the pre-joints. rubbed with a steel trowel. Small flaws or air voids help imitate a concrete surface. After stiffening, the joints are restructured again using a plastic float.



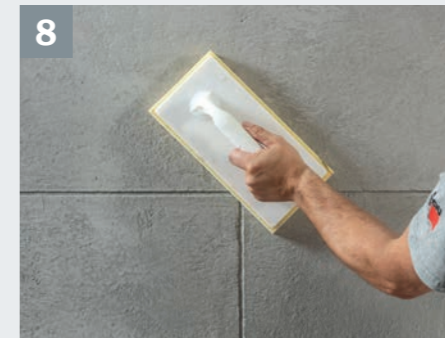
**5** After hardening, the joints are reworked again with sandpaper so that in the finished appearance even joint dimension shows.



**6** After the CreativTop Pearl has dried for at least 24 hours\*, apply a single coat of Baumit StarColor (diluted 20% with water) in shade 0927 or 0447. Processing is either wet-on-wet across the field or seamlessly from joint to joint.



**7** After a sufficient drying time of the coat of at least 12 hours\*, Baumit Lasur is finally applied in colour 733L or 734L with a lambskin roller applied...



**8** ...and removed with a sponge board.



Finished concrete look.

\*The stated standing time refers to an ambient temperature of +20°C and 60% relative humidity. Drying can be significantly delayed, especially if the humidity is higher.

# Baumit CreativTop

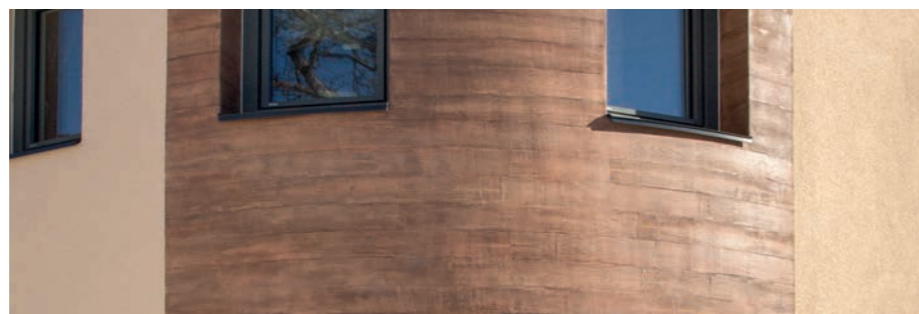
## Wood In Colour & Structure

Real wood on the facade quickly becomes unsightly. With Baumit CreativTop you create deceptively real wood looks on the facade - and that also low maintenance. Wood look in a wide variety of colour and structure nuances combined with an efficient Baumit insulation system.

- Steel trowel
- Plastic float
- H Rule
- Lambskin roller
- Sanding board
- Foam roller
- Sponge board
- Wood grain painting tool
- Glaze brush

**Notice:**

Depending on the desired tint of the wood look, a combination of different glaze colours can be provided. It should be noted here that the actual colour develops only after complete drying. Test surfaces must therefore be created if the colour shades deviate.



### Material

CONCRETE LOOK 1		
Baumit CreativTop Trend	0019	ca. 3.0 – 3.5 kg/m <sup>2</sup>
Baumit CreativTop Pearl	0019	ca. 2.1 – 2.5 kg/m <sup>2</sup>
Baumit SilikonColor/StarColor	0927	ca. 0.15 l/m <sup>2</sup>
Baumit Lasur	733L	ca. 0.08 – 0.1 l/m <sup>2</sup>

CONCRETE LOOK 2		
Baumit CreativTop Trend	0019	ca. 3.0 – 3.2 kg/m <sup>2</sup>
Baumit CreativTop Pearl	0019	ca. 2.1 – 2.5 kg/m <sup>2</sup>
Baumit SilikonColor/StarColor	0447	ca. 0.15 l/m <sup>2</sup>
Baumit Lasur	734L	ca. 0.08 – 0.1 l/m <sup>2</sup>



**1** Baumit SilikonTop K 1.5 is applied and rubbed in over the entire surface with a stainless steel trowel. After a standing time of 24 hours\*, the surface is roughly sanded with 16-grit sandpaper...



**2** ...and then over the entire surface Filled with Baumit CreativTop Silk in the defined shade.



**3** After a standing time of 24 hours\*, another layer of Baumit CreativTop Silk is applied in the required layer thickness. Right after structure with a wood grain painting tool. In addition, the surface can be decorated with imitation knots and nails.



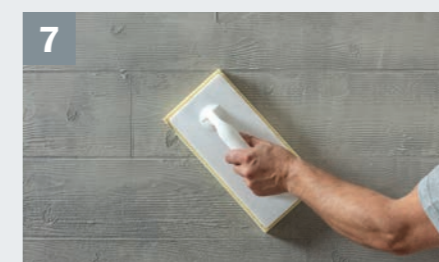
**4** If you can process in one step, depending on the number of applicators, weather conditions and local conditions. In the event of work interruptions mask off the joint pattern accordingly. Alternatively, the joint can also be emphasized (e.g. by structuring with an H Rule).



**5** Depending on the structure intensity, any burrs that have formed are removed and/or ground over after the Baumit CreativTop Silk has dried sufficiently.



**6** After a sufficient drying time of the Baumit CreativTop Silk of at least 24 hours\*, Baumit Glaze is finally applied in the defined colour using a lambskin roller...



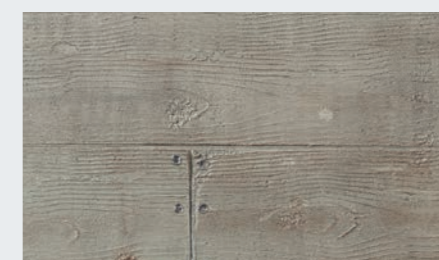
**7** ...and removed with a sponge board.



**8** Next, Baumit PuraColor is rolled up undiluted in the defined colour on the surface and without pressure with a small amount of material using a foam roller...



**9** ...and lightly wiped away with a glaze brush. The job can be done wet on wet, as well as be done on the dried glaze.



Depending on the desired tint of the wood look, a combination of different Glaze colours are provided. It should be noted here that the actual colour only changes developed after complete drying. Test areas are therefore in deviating colour tones mandatory to create.



\*The stated standing time refers to an ambient temperature of +20°C and 60% relative humidity. Drying can be significantly delayed, especially if the humidity is higher.

## Baumit CreativTop

# New Trend In Rust

The special industrial charm of rusty metal on the facade is particularly popular with architects and artists because it looks warm and rough at the same time. Now there's a cost-effective, weatherproof, and heat-efficient alternative to real metal: Baumit CreativTop in a natural rust look convinces with earthy, slightly changing colours and total freedom from maintenance.

- Notched trowel
- Pressure sprayer
- Plastic film
- Lambskin roller
- Glaze brush

**Notice:**  
A field test should be conducted prior to full system application to ensure suitability with local environment conditions.



726L



730L



735L

### Material

RUST LOOK		
Baumit CreativTop Fine	0019	ca. 3.1 - 3.6 kg/m <sup>2</sup>
Baumit Metallic	755M	ca. 0.30 - 0.35 l/m <sup>2</sup>
Baumit Lasur	730L	ca. 0.08 - 0.1 l/m <sup>2</sup>
OPTIONAL		
Baumit Lasur	726L	ca. 0.08 - 0.1 l/m <sup>2</sup>
Baumit Lasur	735L	ca. 0.08 - 0.1 l/m <sup>2</sup>



**1**  
**Baumit CreativTop Fine in colour 0019** applied to the substrate, combed through with a stainless notched trowel (teeth 8 mm) and then smoothed. This achieves an even layer thickness of approx. 2 mm.



**2**  
Immediately afterwards, the surface is completely wetted using a pressure sprayer.



**3**  
In a further step, cover the surface with plastic and rolled over with a lambskin roller and pressed. The film is then removed again. The resulting air pockets help imitate a rusted surface.



**4**  
After a sufficient drying time of the **Baumit CreativTop Fine** of at least 24-48 hours\*, **Baumit Metallic** in colour shade 755M is applied to cover the entire surface using a cross coat with a lambskin roller.



**5**  
After a standing time of at least 12 hours\*, **Baumit Lasur** in colour shade 730L is applied over the entire surface. In addition, accents can be set using **Baumit Lasur** in colour shade 726L and/or 735L.



**6**  
In order to avoid rolling marks, the surface is brushed off immediately after application of the **Baumit Lasur** or textured with a sponge board.



Finished rust look.

\*The stated standing time refers to an ambient temperature of +20°C and 60% relative humidity. Drying can be significantly delayed, especially if the humidity is higher.

# Baumit CreativTop

## Creative Sandstone Texture

This creative facade design underlines architectural features and gives a building a very special external effect, but what about maintenance and design options? Low-maintenance and with almost unlimited possibilities, Baumit CreativTop creates the impression of natural sandstone with individual charm.

- Steel trowel
- Plastic float
- H Rule
- Sanding board
- Lambskin roller
- Glaze brush



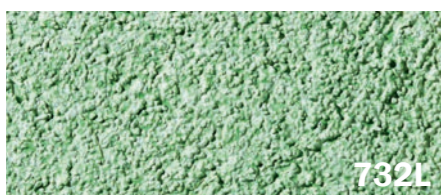
735L



726L



730L



732L



### Material

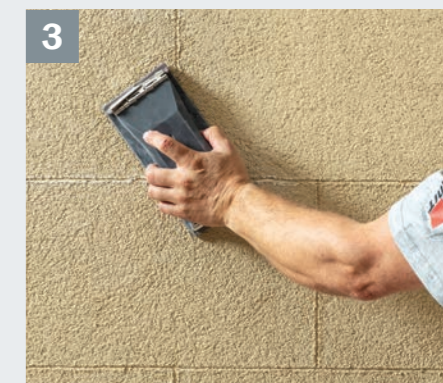
RUST LOOK		
Baumit SilikonTop K 1,5	0185	ca. 2.5 kg/m <sup>2</sup>
Baumit CreativTop Pearl	0217	ca. 1.8 - 2.2 kg/m <sup>2</sup>
Baumit Lasur	735L	ca. 0.08 - 0.1 l/m <sup>2</sup>
OPTIONAL		
Baumit Lasur	726L	ca. 0.08 - 0.1 l/m <sup>2</sup>
Baumit Lasur	730L	ca. 0.08 - 0.1 l/m <sup>2</sup>
Baumit Lasur	732L	ca. 0.08 - 0.1 l/m <sup>2</sup>



1 Baumit SilikonTop K 1.5 in colour 0185 is applied over the entire surface with a stainless steel trowel raised and rubbed...



2 ...and the joint pattern created according to the joint plan in the desired joint width. The use of an H Rule with the help of a plastic float is recommended here.



3 After standing for 24 hours\* roughly sand the surfaces and joints with 16-grit sandpaper.



4 Then the grain structure is covered with Baumit CreativTop Pearl in colour shade 0217 almost completely filled without taking into account the pre-jointed joints and rubbed down smoothed again with light pressure or rubbed in with a steel trowel. Defects or air voids contribute to the imitation of a sandstone surface.



5 After stiffening, the joints are restructured again using a plastic float.



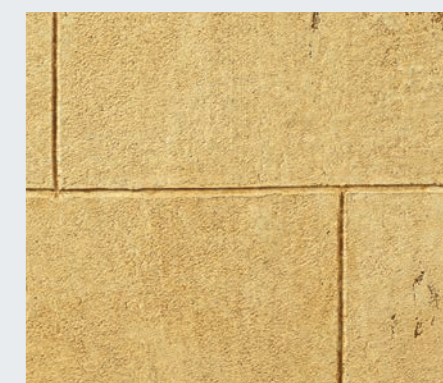
6 After standing for 24 hours\* roughly sand the surface and the joints with 16-grit sandpaper.



7 Apply Baumit Lasur in colour 735L...



8 ...immediately wipe away with a glaze brush.



Finished sandstone look.

Optionally, shading or setting accents can be done using Baumit Lasur in the colours 730L, 726L or 732L.

\*The stated standing time refers to an ambient temperature of +20°C and 60% relative humidity. Drying can be significantly delayed, especially if the humidity is higher.



Baumit CreativTop

## Structure With A Broom Finish

The surface of the building is given a unique effect with this technique running either horizontally or vertically.

Baumit CreativTop

## Classic Slurry Technique

A classic variant of facade design is plaster. Historical plasters in particular are currently experiencing a veritable renaissance. In connection with insulation systems, render is indispensable. The possibilities are now unlimited, mastery more in demand than ever.

Broom Fine	Baumit CreativTop Fine	ca. 3.5 – 4.0 kg/m <sup>2</sup>
------------	------------------------	---------------------------------

**1**

Baumit CreativTop Fine is supplied in the desired shade applied to the substrate in grain size.

**2**

After sufficient drying, another layer of Baumit CreativTop Fine is applied and combed through with a stainless notched trowel (teeth 8 mm) and roughly smoothed off if necessary.

**3**

Immediately afterwards, the surface is structured using a broom. A field delimitation is to be carried out if, due to the local conditions, there is no uninterrupted structuring of the total area can be done.

**1**

Baumit CreativTop Trend comes with a stainless steel trowel applied over the entire surface. The layer thickness results from the desired structure, but should not exceed 5 mm. When using Baumit CreativTop Fine or CreativeTop Pearl, the surface is previously treated with Baumit SilikonTop K 1.5 plastered.

**2**

The still fresh CreativTop comes with a stainless steel trowel structured as desired.

**3**

Then the still fresh, but already slightly worn surface is slurried with a damp painter's brush or a damp sponge. This flattens the existing burrs.

Broom Coarse	Baumit CreativTop Trend	ca. 3.2 – 3.7 kg/m <sup>2</sup>
--------------	-------------------------	---------------------------------

**1**

Baumit CreativTop Trend is in the desired shade in grain strength on the substrate raised...

**2**

...and structured with a broom.

**3**

Finished broomstick optics.

Slurry Technology Pearl	
Baumit SilikonTop K 1,5	ca. 2.5 kg/m <sup>2</sup>
Baumit CreativTop Pearl	ca. 3.0 – 3.5 kg/m <sup>2</sup>
Slurry Technology Fine	
Baumit SilikonTop K 1,5	ca. 2.5 kg/m <sup>2</sup>
Baumit CreativTop Fine	ca. 3.0 – 3.5 kg/m <sup>2</sup>
Slurry Technology Trend	
Baumit CreativTop Trend	ca. 4.2 kg/m <sup>2</sup>







Baumit CreativTop  
**Spray Technique**

Coarse structures, rough surfaces in contrast to modern architecture or in connection with traditional construction bring excitement and liveliness to the façade.

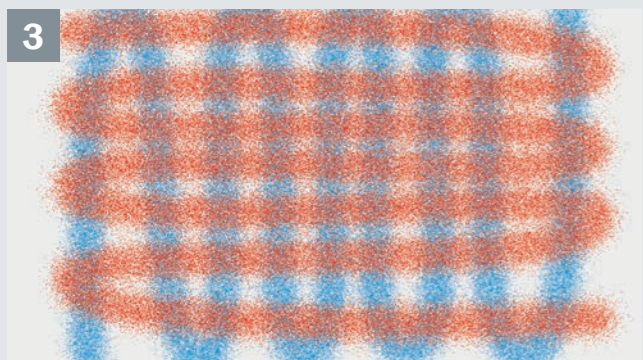
<b>Spray Technique Rustic</b>	<b>Baumit CreativTop Max</b>	ca. 8.0 – 9.0 kg/m <sup>2</sup>
-------------------------------	------------------------------	---------------------------------



**1** Baumit CreativTop Max is applied crosswise evenly to the substrate. A field delimitation is to be implemented if, due to the local conditions, no uninterrupted structuring of the entire area can take place.



**2** After 12 hours apply a second layer of CreativTop Max.



**3** One layer will be applied horizontally, the other vertically.



Finished spray technique.

**HINTS & TIPS**

**Service life:**

The stated service lives refer to an ambient temperature of +20°C and 60% relative humidity. Drying can be significantly delayed, particularly at higher humidity levels. moisture to be reabsorbed.

**Fresh in fresh:**

The second layer of render is applied to the first layer of plaster that has dried and is already stable. The time interval between the application of the first and second layer of plaster depends on the substrate and the weather.

**Minimum layer thickness:**

When using the CreativTop products on EWI, a minimum layer thickness of 1.5 mm is required, for structures with indentations (e.g. grooves) of at least 2 mm required.

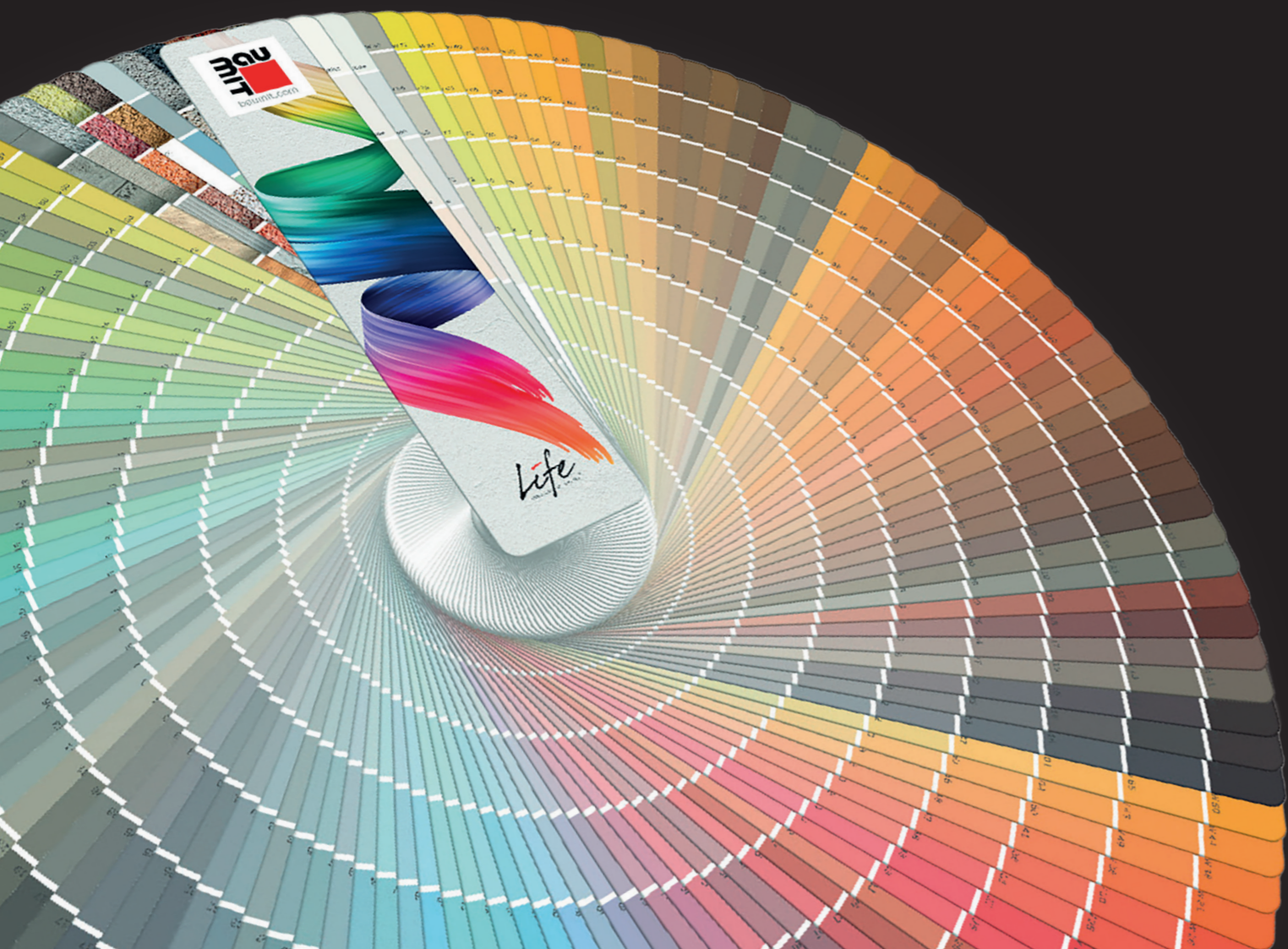
**Colour fastness of Life colours in the brochure:**

The samples shown serve as a colour guide for the selected product. An absolute colour match with the delivered material cannot be guaranteed.



# Baumit Life Colour System

The Baumit Life colour system guarantees the right colour for every need. The colour fan has been expanded to include 180 new colours so that the latest trends in façade design are represented. Years of experience and style research form the basis for this enhancement.



## The right colour for every façade!

W1200	W1209	0021	0031	0041	0051	0061	0071	0081
W1201	W1210	0022	0032	0042	0052	0062	0072	0082
W1202	W1211	0023	0033	0043	0053	0063	0073	0083
W1203	0014	0024	0034	0044	0054	0064	0074	0084
W1204	0015	0025	0035	0045	0055	0065	0075	0085
W1205	0016	0026	0036	0046	0056	0066	0076	0086
W1206	0017	0027	0037	0047	0057	0067	0077	0087
W1207	0018	0028	0038	0048	0058	0068	0078	0088
W1208	0019	0029	0039	0049	0059	0069	0079	0089
0321	0331	0341	0351	0361	0371	0381	0391	1281
0322	0332	0342	0352	0362	0372	0382	0392	1282
0323	0333	0343	0353	0363	0373	0383	0393	1283
0324	0334	0344	0354	0364	0374	0384	0394	1284
0325	0335	0345	0355	0365	0375	0385	0395	1285
0326	0336	0346	0356	0366	0376	0386	0396	1286
0327	0337	0347	0357	0367	0377	0387	0397	1287
0328	0338	0348	0358	0368	0378	0388	0398	1288
0329	0339	0349	0359	0369	0379	0389	0399	1289
0601	0611	0621	0631	0641	0651	0661	0671	0681
0602	0612	0622	0632	0642	0652	0662	0672	0682
0603	0613	0623	0633	0643	0653	0663	0673	0683
0604	0614	0624	0634	0644	0654	0664	0674	0684
0605	0615	0625	0635	0645	0655	0665	0675	0685
0606	0616	0626	0636	0646	0656	0666	0676	0686
0607	0617	0627	0637	0647	0657	0667	0677	0687
0608	0618	0628	0638	0648	0658	0668	0678	0688
0609	0619	0629	0639	0649	0659	0669	0679	0689
1381	1341	1351	1361	1371	0971	1331	0981	0991
1382	1342	1352	1362	1372	0972	1332	0982	0992
1383	1343	1353	1363	1373	0973	1333	0983	0993
1384	1344	1354	1364	1374	0974	1334	0984	0994
1385	1345	1355	1365	1375	0975	1335	0985	0995
1386	1346	1356	1366	1376	0976	1336	0986	0996
1387	1347	1357	1367	1377	0977	1337	0987	0997
1388	1348	1358	1368	1378	0978	1338	0988	0998
1389	1349	1359	1369	1379	0979	1339	0989	0999

The colours and patterns shown serve as approximate colour representation for the selected product. An absolute colour match with the supplied material cannot be guaranteed. W1200 only available in Baumit StarTop, -Color, CreativTop.

# Baumit Life Colour System

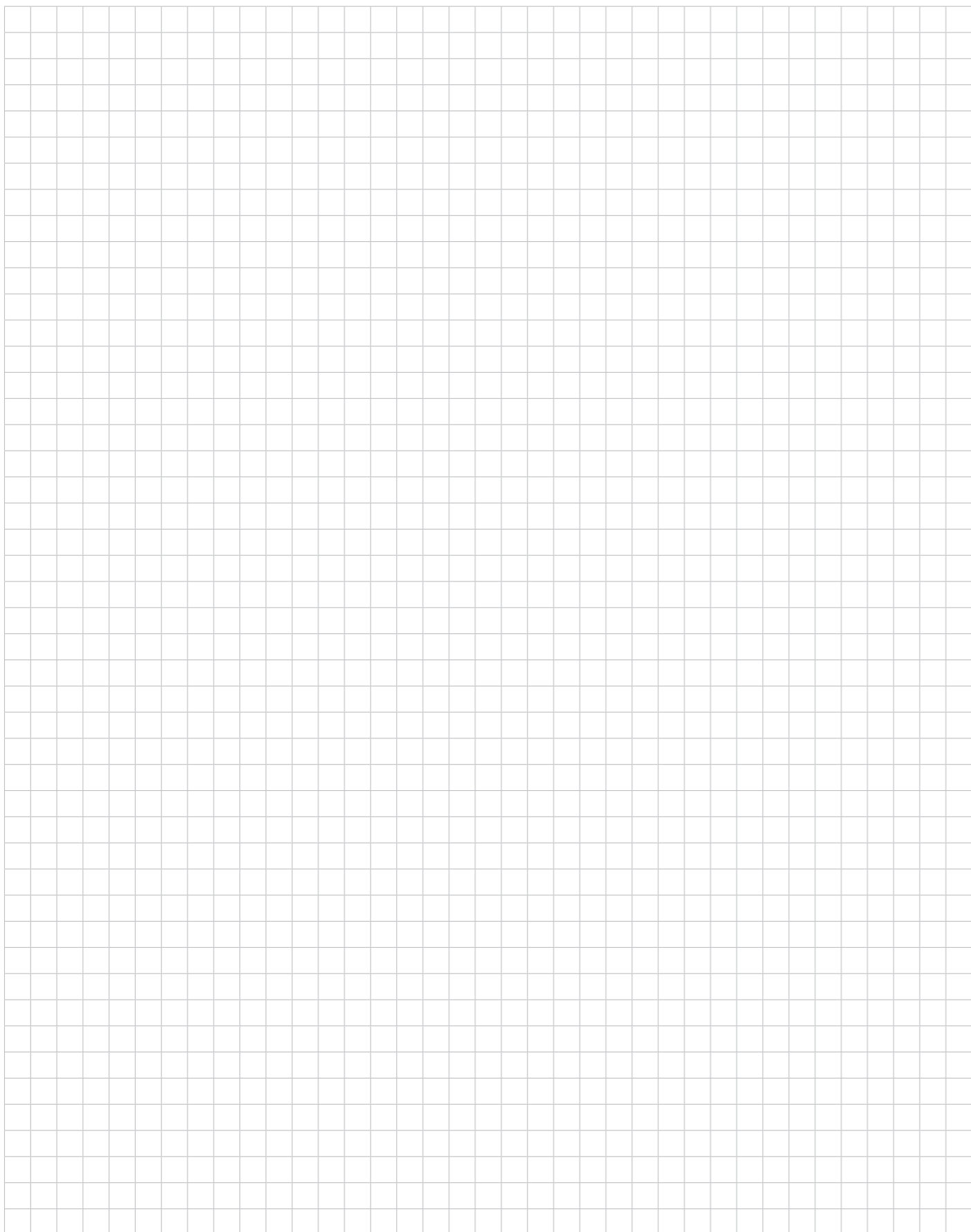
● 0121	● 0131	● 0141	▲▲ 0151	▲▲ 0161	▲▲ 0171	▲▲ 0181	▲▲ 0191	▲▲ 1251	▲▲ 1261
0122	0132	0142	▲ 0152	▲ 0162	0172	▲ 0182	▲ 0192	▲ 1252	▲ 1262
0123	0133	0143	0153	0163	0173	0183	0193	▲ 1253	▲ 1263
0124	0134	0144	0154	0164	0174	0184	0194	▲ 1254	▲ 1264
0125	0135	0145	0155	0165	0175	0185	0195	▲ 1255	▲ 1265
0126	0136	0146	0156	0166	0176	0186	0196	▲ 1256	▲ 1266
0127	0137	0147	0157	0167	0177	0187	0197	▲ 1257	▲ 1267
0128	0138	0148	0158	0168	0178	0188	0198	▲ 1258	▲ 1268
0129	0139	0149	0159	0169	0179	0189	0199	▲ 1259	▲ 1269
▲▲ 1291	▲▲ 0401	▲▲ 0411	▲▲ 1311	▲▲ 1301	▲▲ 0421	▲▲ 0431	▲▲ 0441	● 0451	● 0461
▲ 1292	▲ 0402	▲ 0412	▲ 1312	▲ 1302	▲ 0422	▲ 0432	▲ 0442	● 0452	▶ 0462
▲ 1293	▲ 0403	▲ 0413	▲ 1313	▲ 1303	▲ 0423	▲ 0433	▲ 0443	● 0453	▶ 0463
1294	0404	0414	▲ 1314	▲ 1304	▲ 0424	▲ 0434	▲ 0444	● 0454	▶ 0464
1295	0405	0415	1315	1305	0425	0435	0445	● 0455	▶ 0465
1296	0406	0416	1316	1306	0426	0436	0446	● 0456	▶ 0466
1297	0407	0417	1317	1307	0427	0437	0447	● 0457	▶ 0467
1298	0408	0418	1318	1308	0428	0438	0448	● 0458	▶ 0468
1299	0409	0419	1319	1309	0429	0439	0449	● 0459	▶ 0469
● 0721	● 0731	● 0741	● 0751	● 0761	▲▲ 0771	▲▲ 0781	▲▲ 0791	▲▲ 0831	▲▲ 0841
0722	0732	0742	0752	0762	▲ 0772	▲ 0782	▲ 0792	▲ 0832	▲ 0842
0723	0733	0743	0753	0763	0773	0783	0793	▲ 0833	▲ 0843
0724	0734	0744	0754	0764	0774	0784	0794	▲ 0834	▲ 0844
0725	0735	0745	0755	0765	0775	0785	0795	▲ 0835	▲ 0845
0726	0736	0746	0756	0766	0776	0786	0796	▲ 0836	▲ 0846
0727	0737	0747	0757	0767	0777	0787	0797	▲ 0837	▲ 0847
0728	0738	0748	0758	0768	0778	0788	0798	▲ 0838	▲ 0848
0729	0739	0749	0759	0769	0779	0789	0799	▲ 0839	▲ 0849
● 1001	▲▲ 1011	▲▲ 1411	▲▲ 1021	▲▲ 1401	▲▲ 1391	▲▲ 1031	● 1041	● 1051	● 1061
1002	▲ 1012	▲ 1412	▲ 1022	▲ 1402	▲ 1392	▲ 1032	● 1042	● 1052	● 1062
1003	1013	1413	1023	1403	▲ 1393	1033	● 1043	● 1053	● 1063
1004	1014	1414	1024	1404	1394	1034	● 1044	● 1054	● 1064
1005	1015	1415	1025	1405	1395	1035	● 1045	● 1055	● 1065
1006	1016	1416	1026	1406	1396	1036	● 1046	● 1056	● 1066
1007	1017	1417	1027	1407	1397	1037	● 1047	● 1057	● 1067
1008	1018	1418	1028	1408	1398	1038	● 1048	● 1058	● 1068
1009	1019	1419	1029	1409	1399	1039	● 1049	● 1059	● 1069

▲▲ 1271	● 0201	● 0211	● 0221	▲▲ 0231	▲▲ 0241	● 0281	● 0291	● 0301	▲▲ 0311
▲ 1272	0202	0212	0222	0232	0242	0282	0292	0302	0312
▲ 1273	0203	0213	0223	0233	0243	0283	0293	0303	0313
1274	0204	0214	0224	0234	0244	0284	0294	0304	0314
1275	0205	0215	0225	0235	0245	0285	0295	0305	0315
1276	0206	0216	0226	0236	0246	0286	0296	0306	0316
1277	0207	0217	0227	0237	0247	0287	0297	0307	0317
1278	0208	0218	0228	0238	0248	0288	0298	0308	0318
1279	0209	0219	0229	0239	0249	0289	0299	0309	0319
● 0471	● 0481	● 0491	▲▲ 0501	▲▲ 0511	▲▲ 0521	▲▲ 0561	▲▲ 0571	▲▲ 0581	▲▲ 0591
▶ 0472	▶ 0482	▶ 0492	▶ 0502	▶ 0512	▶ 0522	▶ 0562	▶ 0572	▶ 0582	▶ 0592
▶ 0473	▶ 0483	▶ 0493	▶ 0503	▶ 0513	▶ 0523	▶ 0563	▶ 0573	▶ 0583	▶ 0593
▶ 0474	▶ 0484	▶ 0494	▶ 0504	▶ 0514	▶ 0524	▶ 0564	▶ 0574	▶ 0584	▶ 0594
▶ 0475	▶ 0485	▶ 0495	▶ 0505	▶ 0515	▶ 0525	▶ 0565	▶ 0575	▶ 0585	▶ 0595
▶ 0476	▶ 0486	▶ 0496	▶ 0506	▶ 0516	▶ 0526	▶ 0566	▶ 0576	▶ 0586	▶ 0596
▶ 0477	▶ 0487	▶ 0497	▶ 0507	▶ 0517	▶ 0527	▶ 0567	▶ 0577	▶ 0587	▶ 0597
▶ 0478	▶ 0488	▶ 0498	▶ 0508	▶ 0518	▶ 0528	▶ 0568	▶ 0578	▶ 0588	▶ 0598
▶ 0479	▶ 0489	▶ 0499	▶ 0509	▶ 0519	▶ 0529	▶ 0569	▶ 0579	▶ 0589	▶ 0599
▲▲ 0851	▲▲ 1321	▲▲ 0861	▲▲ 0871	▲▲ 0881	▲▲ 0891	▲▲ 0901	▲▲ 0911	▲▲ 0921	▲▲ 0931
▲ 0852	▲ 1322	▲ 0862	▲ 0872	▲ 0882	▲ 0892	▲ 0902	▲ 0912	▲ 0922	▲ 0932
0853	▲ 1323	0863	▲ 0873	▲ 0883	▲ 0893	▲ 0903	▲ 0913	▲ 0923	▲ 0933
0854	1324	0864	0874	▲ 0884	▲ 0894	0904	0914	0924	0934
0855	1325	0865	0875	0885	0895	0905	0915	0925	0935
0856	1326	0866	0876	0886	0896	0906	0916	0926	0936
0857	1327	0867	0877	0887	0897	0907	0917	0927	0937
0858	1328	0868	0878	0888	0898	0908	0918	0928	0938
0859	1329	0869	0879	0889	0899	0909	0919	0929	0939
● 1071	● 1421	● 1111	● 1121	● 1131	● 1141	● 1431	▲▲ 1441	● 1151	● 1161
1072	1422	1112	1122	1132	1142	1432	▲ 1442	1152	1162
1073	1423	1113	1123	1133	1143	1433	1443	1153	1163
1074	1424	1114	1124	1134	1144	1434	1444	1154	1164
1075	1425	1115	1125	1135	1145	1435	1445	1155	1165
1076	1426	1116	1126	1136	1146	1436	1446	1156	1166
1077	1427	1117	1127	1137	1147	1437	1447	1157	1167
1078	1428	1118	1128	1138	1148	1438	1448	1158	1168
1079	1429	1119	1129	1139	1149	1439	1449	1159	1169

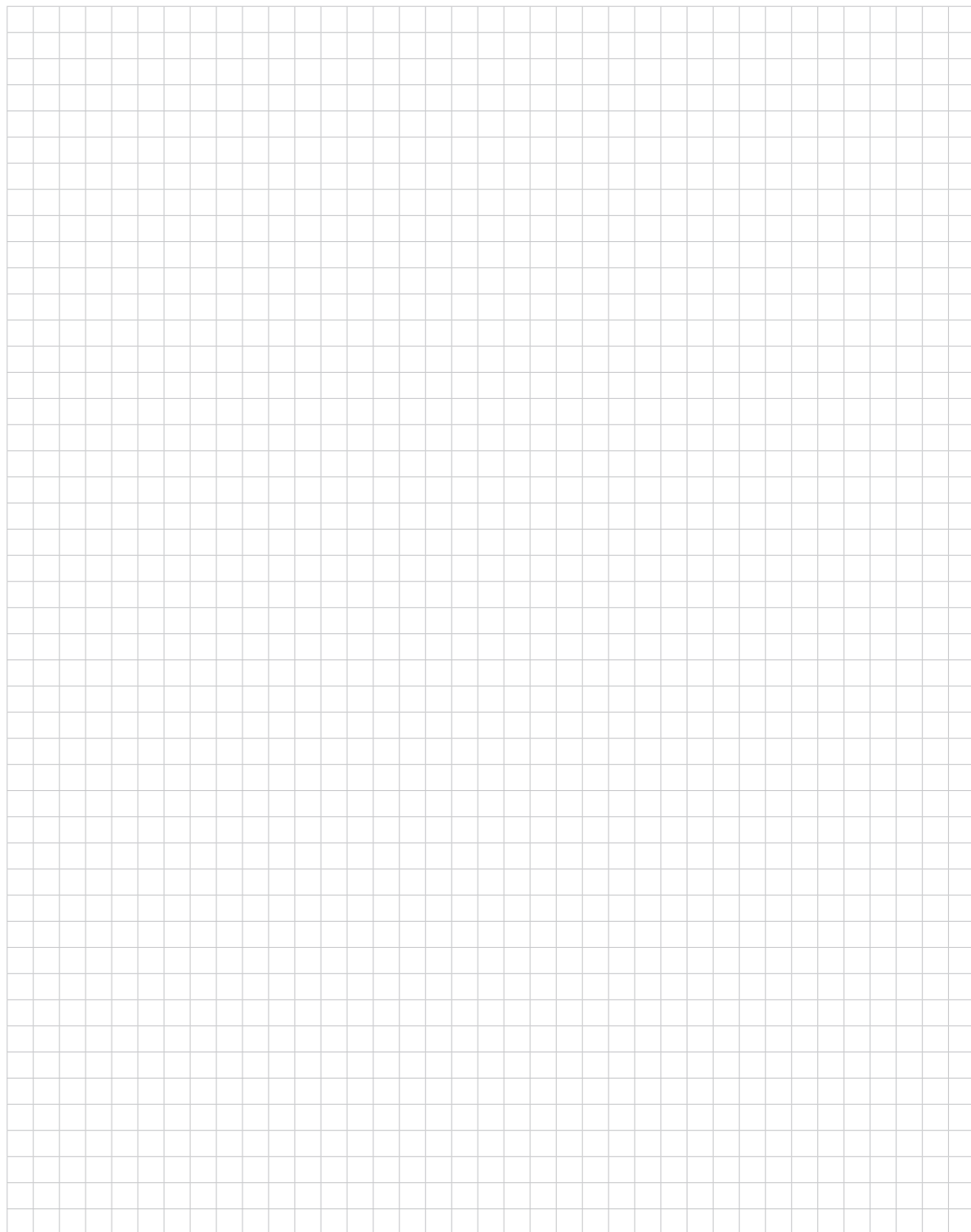
Last number 1-3: Priming with coloured Baumit PremiumPrimer recommended (according to Baumit product data sheet).

- Only available in Baumit PuraTop, -Color.
- ▶ Only available in Baumit PuraTop, -Color, Baumit StarTop, -Color, Baumit GranoporTop, -Color and for Baumit CreativTop Max, Trend, Fine, Pearl.
- ▲ HBW < 25 exclusively with Baumit PuraTop, -Color and StarTop, -Color according to processing guideline.
- New trend colours 2023

NOTES



NOTES





Baumit Ltd  
Unit 2 Westmead  
New Hythe Lane  
Aylesford  
Maidstone  
Kent  
ME20 6XJ

01622 710 763  
contact@baumit.co.uk  
baumit.co.uk