



# 2025 Catalogue

**EWI • Render • Plaster**



## OVERVIEW

<b>WELCOME</b>	<b>2</b>
<b>GO2MORROW</b>	<b>4</b>
<b>CRYSTALSET</b>	<b>6</b>
<b>BAUMIT LIFE COLOUR SYSTEM</b>	<b>8</b>
<b>FINAL COATINGS</b>	<b>14</b>
<b>FAÇADE PAINTS</b> Color	<b>16</b>
<b>FAÇADE RENDERS</b> Top	<b>22</b>
<b>PRIMERS</b>	<b>34</b>
<b>EWI</b>	<b>38</b>
<b>ADHESIVES &amp; BASE COAT</b> Contact, Fix, Flex	<b>42</b>
<b>INSULATION BOARDS</b> Therm	<b>46</b>
<b>MESH &amp; FIXINGS</b> StarTex, StarTrack	<b>48</b>
<b>ACCESSORIES</b> Profiles, Beads	<b>54</b>
<b>MINERAL RENDERS</b>	<b>60</b>
<b>SCRATCH RENDER</b> MonoPlus	<b>61</b>
<b>MINERAL RENDERS</b> MPA, Thermo	<b>62</b>
<b>RENOVATION</b>	<b>64</b>
<b>RENOVATION</b> Multi, Sanova	<b>64</b>
<b>RESTORATION</b> NHL	<b>66</b>
<b>INTERIOR COATINGS</b>	<b>68</b>
<b>PLASTERS</b> SX, Finish, Klima	<b>68</b>
<b>SERVICE</b>	<b>74</b>
<b>TERMS &amp; CONDITIONS</b>	<b>78</b>
<b>WORLD OF BAUMIT</b>	<b>80</b>
<b>INDEX</b>	<b>82</b>



## BAUMIT EWI

- O** OPENSYSYSTEM
- E** STARSYSYSTEM EPS
- M** STARSYSYSTEM MINERAL
- R** STARSYSYSTEM RESOLUTION
- N** STARSYSYSTEM NATURE
- I** POWERSYSYSTEM
- C** CERAMICSYSYSTEM

## Welcome

We empower our partners to build healthy, energy-efficient and beautiful homes for a sustainable future.



Over the past 3 years, since joining Baumit, I have taken the time to fully understand our customers' needs. However, this is by no means a finished task. With continually evolving business needs, we need to adapt and ensure we keep exceeding our customers' expectations. As a team we aim to appease requirements and provide specific, considered, solutions – oftentimes sourcing products from within the Baumit Group across Europe.

Being part of the Baumit Group, with c. 45 million m<sup>2</sup> of EWI per annum across Europe, we truly are the experts. When assessing what the UK market needs, we are in the fortunate position to be able to cherry pick the products and solutions that have been tried and trusted within mainland Europe for decades. In 2025 we shall be launching CrystalSet, a mineralic topcoat solution, which has been extremely well received by the other markets. Likewise, the Finish Range of internal plasters add further depth to our range and offer a more complete solution. You can learn about these products in this catalogue, along with details on the new and improved Baumit MonoPlus, our through coloured one coat scratch render.

Building on the success of the City & Guilds Assured training, that was introduced in 2024, we have even more dates available, in more locations, in 2025. Something that I was very keen on from the start, was not just being a supplier of products for our Applicators. I am therefore incredibly pleased to say we have provided more leads for our Approved Applicator network than ever before. This, coupled with offering the highest level of service, is something all the team here at Baumit UK are very proud of and committed to.

Speaking of the team, I am heartened by their development and how they are proactive in finding solutions to meet your needs. By recruiting a mixture of industry specific expertise and outside of EWI/ render experience team members, we have seen this blend together well and result in some genuinely interesting discussions. We shall build on this in 2025 and grow the team where required.

As always, we love to hear feedback from our customers and welcome the opportunity to understand how we can support you, so please do get in touch with myself, or the team.

David Stolton  
Managing Director

### HEALTHY

As a pioneer in healthy building, the company offers products for solid construction, efficient insulation and a healthy indoor climate.

### ENERGY EFFICIENT

Baumit shows how solid construction and efficient insulation can reduce energy consumption and keep heat and cold out.

### BEAUTIFUL

With over 1,000 colours, cooling pigments for dark façades and a wide variety of techniques, structures and glazes.

### SUSTAINABLE

The top priority is to use resources carefully. Ideas only have a future if tomorrow is secured.



## Ideas with a future.

Decades of experience combined with groundbreaking research and development are the best prerequisites for ideas with a future. To ensure that these also make our customers successful, Baumit relies on reliability, the highest quality standards, an exceptional understanding of service and sustainable action.

### Your strong partner.

Founded in 1988 as a building materials brand, Baumit is now an established name in the European building materials industry and the leading manufacturer of external thermal insulation composite systems and façades coatings in Central Europe. The Baumit Group has branches and subsidiaries all across Europe.. Healthy and sustainable growth as well as reliable handshake agreement and short distances are the basis for a trusting partnership.

- builds on experience
- shows foresighted responsibility
- lives customer-orientated reliability



### Your product for every need.

Our comprehensive product range considers and tests all requirements for building materials. We supply the right product for every building project, in a quality that guarantees durability and resistance. At the Friedrich Schmid Innovation Center and the VIVA Research Park, which is unique in Europe, we research and develop functional building materials with added value that not only work as a product, but also as an ideal system and enable a pleasant, energy-saving indoor climate.

- with the best availability of goods
- designed for every application
- quick and easy to process



### Your personal contact.

The best building material is only as good as its processing on site. Based on this understanding, our service does not end after the sale of the products. Our employees take the professional and therefore optimal processing of the products very seriously and train applicators personally. Product innovations and the latest processing techniques are demonstrated, explained and learned in individual training courses and seminars.

- always close to you
- advice with the highest level of expertise
- values partnership-based cooperation



### Your future success.

As a building materials pioneer and driver of innovation, we know what will continue to make our customers successful in the future. Consistent values such as adherence to deadlines, reliability, personal contact with training courses for competent specialist knowledge as well as reliable and durable products for every need. In addition, there is the pioneering role when it comes to the careful use of resources, all within Baumit's Baumit sustainability pledge G02morrow.

- because we live adherence to deadlines
- because we train expertise
- because we are successful together





**GO2morrow sums up our sustainable actions. Because everything we do is designed to secure our tomorrow. This is the path we have consistently followed since the company was founded. We take responsibility for every measure we take - from an ecological, economic and social perspective.**

**The most important GO2morrow goal by 2030**

**20% less CO<sub>2e</sub>**

**Our ecological goals until 2030**

**Produce 20% less CO<sub>2e</sub>** – This is our most important ecological GO2morrow goal. Improving the formulations of our products, environmentally friendly binders and recycled packaging materials contribute to this.

**10% less or green energy per ton of building material produced.** More solar panels, more efficient use of energy and the latest technologies are important steps towards this goal.

**Implement 10% more circular economy.** We achieve this with our pioneering product GO2morrow recycled concrete and the development of innovative technologies.



**Our social goals for 2030**

**Equal opportunities for our employees.** We will make the working environment even more inclusive, promote diversity, increase the proportion of women in management and offer everyone the best possible conditions for personal and professional development.

**Support for the local population.** Here we want to get involved in social projects, provide help for disadvantaged people, engage in local sponsorship and contribute financial resources, Baumit building materials or voluntary work.

**No accidents at work.** Our Safety, Order & Sanitation Guide, occupational health and safety and occupational medical care support us in this.

**Our economic goals for 2030**

**Secure growth.** Think long-term and maintain and expand market leadership. This secures jobs. Prudence and quality are a clear focus.

**Save raw materials and protect the environment.** We will save transport kilometers, use old buildings as a source of raw materials, use the latest technologies and invest in long-lasting products and demountability.

**Regionalism in the supply chains.** The highest quality standards and the proximity of partners are crucial. We take responsibility for the entire life cycle of our products.

**Proud of GO2morrow milestones achieved together**

**45 million m<sup>2</sup> of façade insulation per year in Europe**  
This means a saving of 1 million tonnes of CO<sub>2e</sub> per year (approximately as much oxygen as 90 million trees produce per year).

**800 million tonnes of CO<sub>2e</sub> saved since the market launch of EW1**  
That's equivalent to the amount of CO<sub>2</sub> produced by 10 million cars in 15 years or 300,000 trips to the moon.



**Healthy living is the focus of research**

The foundations for “healthy living” are scientifically analysed, tested and confirmed in Europe’s largest comparative research park. “Living” is simulated in 13 research houses of various construction types.

**What is analysed?**

Humidity, energy consumption, wall temperature, temperature profiles at different outside temperatures, easily soluble, volatile organic compounds (VOCs) or acoustic parameters - millions of data sets are collected and sent to external scientific institutions for analysis. This means that situations such as heating failure can be realistically recreated and ideal measures for reducing energy and thus CO<sub>2</sub> can be derived. Three core elements have proven to be fundamental with regard to health, quality of life and energy efficiency:



**3 essential principles for healthy and energy-saving living**

**Insulate first – The façade**

- The basis for:
- comfortable warmth, pleasant coolness
  - prevention of mold and drafts
  - ideal room humidity
  - low energy consumption
  - reduced CO<sub>2</sub> emissions

**Interior Values – The interior**

- The basis for:
- humidity-regulated comfortable climate
  - removal of breeding ground for viruses and bacteria
  - clean, aerosol-reduced room air
  - comfortable, consistent room temperature

**Solidity Counts – The shell**

- The basis for:
- sustainable energy storage capacity
  - constant, pleasant wall temperature
  - reduced noise
  - low-emission building materials



**With one click:**

How did our ancestors deal with energy and what can we learn from them? Find out why Baumit is ideally placed to cultivate the three pillars of sustainability even more consciously and intensively.



Scan and watch:

**Sustainability at Baumit**

Interview with Robert Schmid



# Beat the Heat

Highest resistance to staining caused by high temperatures

Climate change is making façades hotter and hotter and therefore more sensitive to dirt. Baumit has the solution: a natural mineral render in a bucket that can withstand even high temperatures thanks to a non-thermoplastic binding agent. Only the specially developed Baumit CrystalActivator “activates” the binding agent in the ready to use render and creates the unique CrystalEffect.

**It is getting and staying warmer**

A heat wave is defined as a series of at least three consecutive days with temperatures exceeding 30°C. Unfortunately, not only is the number of hot days on the rise, but the length of these heat waves is also increasing. Data collected since 1850 reveals that 2023 was the warmest year on record, with global temperatures averaging 1.18 degrees Celsius higher than the historical average for land and sea from 1850 to 2023. In fact, according to a study by the Statista Research Department, the last ten years have accounted for the ten warmest years out of the last 173 years.

**Conventional render turns grey when exposed to heat**

Conventional binders have the characteristic of becoming soft at high temperatures. This allows dirt particles to adhere to the render, and when the façades cool down again, these particles can become trapped in the render, making them impossible to remove. This greying has a long-term impact on the appearance of the façades.

**The innovative CrystalEffect makes it dirt-resistant**

The natural crystalline surface of Baumit CrystalTop is characterised by the highest



anti-dust and anti-greying properties, as the solid mineral binder is not thermoplastic and therefore insensitive to high temperatures.

**Baumit CrystalSet passes the endurance test**  
To replicate the conditions of a hot summer day, samples of conventional render and Baumit CrystalTop were heated to 50 °C. Mica and graphite dust were then applied to simulate dirt accumulation. After both samples cooled to room temperature, a compressor was used to blow away the dirt, simulating wind. This cleaning process was repeated several

times. The results were striking: while the conventional render turned increasingly grey from dirt buildup, the dirt did not adhere to Baumit CrystalTop, demonstrating its superior resistance to staining.

**Baumit uses the advantages of mineral render**

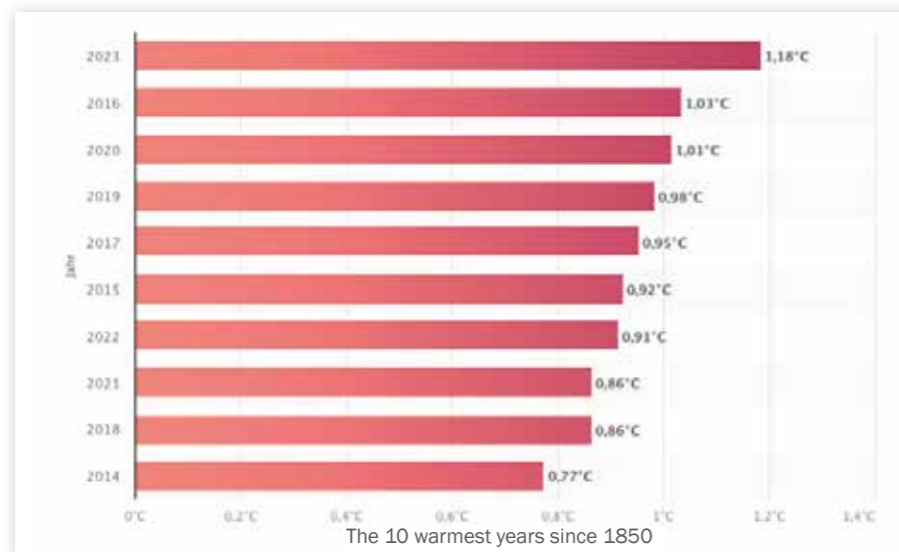
Mineral renders, composed of natural crystalline mineral binders, are highly breathable. This property allows water vapor to easily escape through their tiny microscopic pores. Additionally, these mineral binders maintain consistent strength even at medium to high temperatures, which are commonly experienced in external wall insulation systems (EWI). Remarkably, under these challenging conditions, mineral renders exhibit exceptional resistance to dirt absorption due to their non-thermoplastic characteristics.

**New: 75% natural binder makes it heat resistant**

The main component of the binder is of natural mineral origin. The special formulation ensures the outstanding properties of the ready-to-use Baumit CrystalTop. Additionally, the organic content provides sufficient elasticity and high colour stability for long-lasting functionality.

**The innovation: Baumit stabilizes the binding agent**

Baumit enhances the familiar advantages of mineral renders by offering a ready-to-use, paste-like formulation conveniently packaged



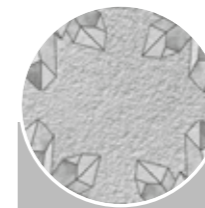
Apply Baumit Crystal Activator to the entire façade

- Can be applied like paint
- High coverage
- Low overflow



Controlled reaction between Baumit Crystal Activator and Top

- By applying Baumit CrystalTop to the Crystal Activator, the initially inactive binder is activated.



Mineral, crystal-hard surface with anti-greying effect

- Natural & breathable
- Anti-dust & anti-greying
- Extremely durable

In contrast, traditional mineral renders are typically sold as powdered products in bags, which require mixing with water before application, activating the binding process immediately. Baumit's innovative approach stabilises the mineral binder until it comes into contact with the Baumit CrystalActivator, which is applied beforehand as a primer on the façades, ensuring optimal performance and ease of use.

**Only effective in a set**

The innovative Baumit CrystalSet consists of the first ready-to-use mineral topcoat CrystalTop in combination with the corresponding primer - the Baumit CrystalActivator, which is used as a regular façade primer with greatly improved processing properties.

It can be applied almost effortlessly to the entire surface of the façade. Only the combination of both products creates the self-contained and solid surface that has the unique CrystalEffect with the highest dirt resistance.



- highest protection against dirt
- outstanding durability
- natural & extremely breathable

With one click:

Baumit CrystalSet stays hard. A sample with conventional plaster and one with Baumit CrystalTop were heated to 50 °C, soiled and then cooled down again. While conventional plaster greys more and more, the dirt does not stick to Baumit CrystalTop.



Scan and watch:



**Baumit CrystalSet**

Baumit CrystalEffect - the practical proof



*Life*  
COLORED BY BAUMIT

# Baumit Life Colour System

Download the Baumit Façades App now, upload a photo of your house and colour it within seconds!



Click here to go to the app:



[www.baumit.co.uk](http://www.baumit.co.uk)





# Baumit Life Colour System

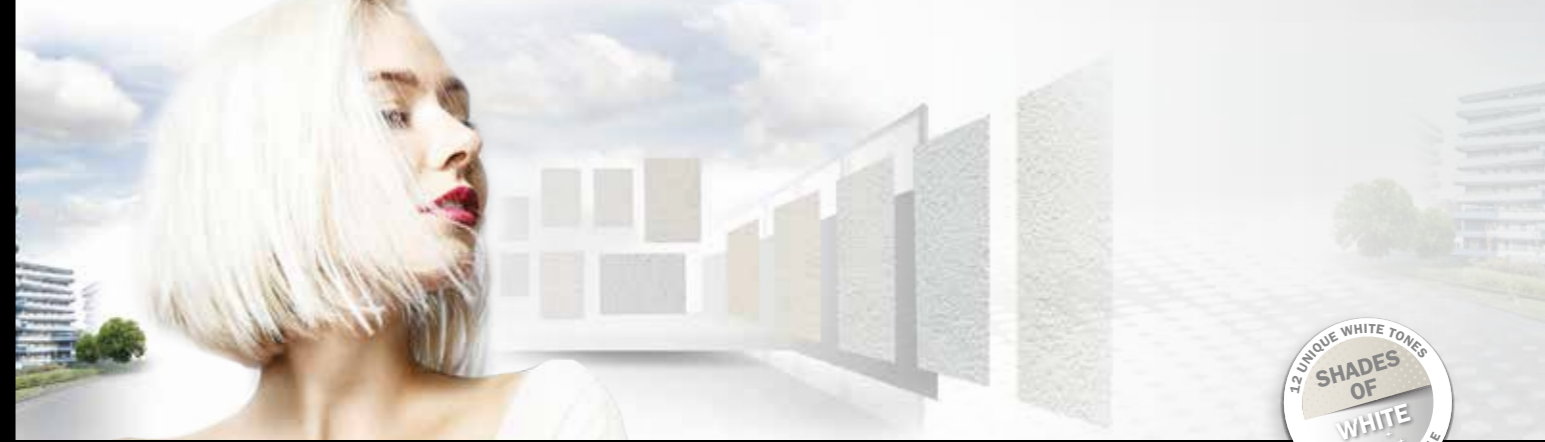
W1200	W1209	● 0021	● 0031	● 0041	● 0051	● 0061	● 0071
W1201	W1210	● 0022	● 0032	● 0042	● 0052	● 0062	● 0072
W1202	W1211	● 0023	● 0033	● 0043	● 0053	● 0063	● 0073
W1203	0014	● 0024	● 0034	● 0044	● 0054	● 0064	● 0074
W1204	0015	● 0025	● 0035	● 0045	● 0055	● 0065	● 0075
W1205	0016	● 0026	● 0036	● 0046	● 0056	● 0066	● 0076
W1206	0017	● 0027	● 0037	● 0047	● 0057	● 0067	● 0077
W1207	0018	● 0028	● 0038	● 0048	● 0058	● 0068	● 0078
W1208	0019	● 0029	● 0039	● 0049	● 0059	● 0069	● 0079
● 0321	● 0331	● 0341	● 0351	● 0361	● 0371	● 0381	● 0391
0322	0332	0342	0352	▲ 0362	▲ 0372	▲ 0382	▲ 0392
0323	0333	0343	0353	0363	0373	0383	0393
0324	0334	0344	0354	0364	0374	0384	0394
0325	0335	0345	0355	0365	0375	0385	0395
0326	0336	0346	0356	0366	0376	0386	0396
0327	0337	0347	0357	0367	0377	0387	0397
0328	0338	0348	0358	0368	0378	0388	0398
0329	0339	0349	0359	0369	0379	0389	0399
● 0601	● 0611	● 0621	● 0631	● 0671	● 0681	● 0691	● 0701
0602	▶ 0612	▶ 0622	▶ 0632	▶ 0672	▶ 0682	▶ 0692	0702
0603	▶ 0613	▶ 0623	▶ 0633	▶ 0673	▶ 0683	▶ 0693	0703
0604	▶ 0614	▶ 0624	▶ 0634	▶ 0674	▶ 0684	▶ 0694	0704
0605	▶ 0615	▶ 0625	▶ 0635	▶ 0675	▶ 0685	▶ 0695	0705
0606	▶ 0616	▶ 0626	▶ 0636	▶ 0676	▶ 0686	▶ 0696	0706
0607	▶ 0617	▶ 0627	▶ 0637	▶ 0677	▶ 0687	▶ 0697	0707
0608	▶ 0618	▶ 0628	▶ 0638	▶ 0678	▶ 0688	▶ 0698	0708
0609	▶ 0619	▶ 0629	▶ 0639	▶ 0679	▶ 0689	▶ 0699	0709
● 1381	● 1341	● 1351	● 1361	● 1371	● 0971	● 1331	● 0981
▲ 1382	▲ 1342	▲ 1352	▲ 1362	▲ 1372	▲ 0972	1332	0982
1383	1343	▲ 1353	1363	1373	0973	1333	0983
1384	1344	1354	1364	1374	0974	1334	0984
1385	1345	1355	1365	1375	0975	1335	0985
1386	1346	1356	1366	1376	0976	1336	0986
1387	1347	1357	1367	1377	0977	1337	0987
1388	1348	1358	1368	1378	0978	1338	0988
1389	1349	1359	1369	1379	0979	1339	0989

● 0081	● 0121	● 0131	● 0141	● 0151	● 0161	● 0171	● 0181	● 0191	● 1251
0082	0122	0132	0142	0152	0162	0172	0182	▲ 0192	▲ 1252
0083	0123	0133	0143	0153	0163	0173	0183	0193	1253
0084	0124	0134	0144	0154	0164	0174	0184	0194	1254
0085	0125	0135	0145	0155	0165	0175	0185	0195	1255
0086	0126	0136	0146	0156	0166	0176	0186	0196	1256
0087	0127	0137	0147	0157	0167	0177	0187	0197	1257
0088	0128	0138	0148	0158	0168	0178	0188	0198	1258
0089	0129	0139	0149	0159	0169	0179	0189	0199	1259
● 1281	● 1291	● 0401	● 0411	● 1311	● 1301	● 0421	● 0431	● 0441	● 0451
▲ 1282	▲ 1292	0402	▲ 0412	▲ 1312	▲ 1302	▲ 0422	▲ 0432	▲ 0442	▲ 0452
▲ 1283	▲ 1293	0403	▲ 0413	▲ 1313	▲ 1303	▲ 0423	▲ 0433	▲ 0443	▲ 0453
1284	1294	0404	0414	1314	1304	0424	0434	0444	▲ 0454
1285	1295	0405	0415	1315	1305	0425	0435	0445	▲ 0455
1286	1296	0406	0416	1316	1306	0426	0436	0446	▲ 0456
1287	1297	0407	0417	1317	1307	0427	0437	0447	▲ 0457
1288	1298	0408	0418	1318	1308	0428	0438	0448	▲ 0458
1289	1299	0409	0419	1319	1309	0429	0439	0449	▲ 0459
● 0711	● 0721	● 0731	● 0741	● 0751	● 0761	● 0771	● 0781	● 0791	● 0831
0712	0722	0732	0742	0752	0762	0772	0782	0792	0832
0713	0723	0733	0743	0753	0763	0773	0783	0793	0833
0714	0724	0734	0744	0754	0764	0774	0784	0794	0834
0715	0725	0735	0745	0755	0765	0775	0785	0795	0835
0716	0726	0736	0746	0756	0766	0776	0786	0796	0836
0717	0727	0737	0747	0757	0767	0777	0787	0797	0837
0718	0728	0738	0748	0758	0768	0778	0788	0798	0838
0719	0729	0739	0749	0759	0769	0779	0789	0799	0839
● 0991	● 1001	● 1011	● 1411	● 1021	● 1401	● 1391	● 1031	● 1041	● 1051
0992	1002	1012	1412	1022	▲ 1402	▲ 1392	1032	1042	1052
0993	1003	1013	1413	1023	1403	1393	1033	1043	1053
0994	1004	1014	1414	1024	1404	1394	1034	1044	1054
0995	1005	1015	1415	1025	1405	1395	1035	1045	1055
0996	1006	1016	1416	1026	1406	1396	1036	1046	1056
0997	1007	1017	1417	1027	1407	1397	1037	1047	1057
0998	1008	1018	1418	1028	1408	1398	1038	1048	1058
0999	1009	1019	1419	1029	1409	1399	1039	1049	1059

The colors and patterns shown serve as a color guide for the selected product. Absolute color matching with the supplied material cannot be guaranteed.  
 All Shades of White tones (starting with W1200) are available for Baumit StarTop/Color, CrystalTop, CreativTop (excluding Silk) and SilikonTop/Color. With the exception of W1200 StarWhite which is only available in StarTop/Color and CreativTop (excluding Silk).

**Final digits 1-3:** It is recommended to prime with colored Baumit PremiumPrimer.  
 ● Colors are only available in Baumit PuraTop/Color. ▶ Colors are only available in Baumit StarTop/Color, PuraTop/Color, GranopoTop/Color and CreativTop.  
 ▲ Colors can be used on ETICS only in Baumit PuraTop/Color, Baumit StarTop/Color & Baumit CrystalTop (available in colors 3-9 as final digit).  
 More information on [life.baumit.com](http://life.baumit.com).

# Baumit Life Colour System



● 1261	● 1271	● 0201	● 0211	● 0221	● 0231	● 0241	● 0281	● 0291	● 0301	● 0311
▲ 1262	▲ 1272	0202	0212	0222	0232	0242	0282	0292	0302	0312
▲ 1263	1273	0203	0213	0223	0233	0243	0283	0293	0303	0313
1264	1274	0204	0214	0224	0234	0244	0284	0294	0304	0314
1265	1275	0205	0215	0225	0235	0245	0285	0295	0305	0315
1266	1276	0206	0216	0226	0236	0246	0286	0296	0306	0316
1267	1277	0207	0217	0227	0237	0247	0287	0297	0307	0317
1268	1278	0208	0218	0228	0238	0248	0288	0298	0308	0318
1269	1279	0209	0219	0229	0239	0249	0289	0299	0309	0319
● 0461	● 0471	● 0481	● 0491	● 0501	● 0511	● 0521	● 0561	● 0571	● 0581	● 0591
▶ 0462	▶ 0472	▶ 0482	▶ 0492	▶ 0502	▶ 0512	▶ 0522	0562	0572	0582	0592
▶ 0463	▶ 0473	▶ 0483	▶ 0493	▶ 0503	▶ 0513	▶ 0523	0563	0573	0583	0593
▶ 0464	▶ 0474	▶ 0484	▶ 0494	▶ 0504	▶ 0514	▶ 0524	0564	0574	0584	0594
▶ 0465	▶ 0475	▶ 0485	▶ 0495	▶ 0505	▶ 0515	▶ 0525	0565	0575	0585	0595
▶ 0466	▶ 0476	▶ 0486	▶ 0496	▶ 0506	▶ 0516	▶ 0526	0566	0576	0586	0596
▶ 0467	▶ 0477	▶ 0487	▶ 0497	▶ 0507	▶ 0517	▶ 0527	0567	0577	0587	0597
▶ 0468	▶ 0478	▶ 0488	▶ 0498	▶ 0508	▶ 0518	▶ 0528	0568	0578	0588	0598
▶ 0469	▶ 0479	▶ 0489	▶ 0499	▶ 0509	▶ 0519	▶ 0529	0569	0579	0589	0599
● 0841	● 0851	● 1321	● 0861	● 0871	● 0881	● 0891	● 0901	● 0911	● 0921	● 0931
0842	▲ 0852	▲ 1322	▲ 0862	▲ 0872	▲ 0882	▲ 0892	▲ 0902	▲ 0912	▲ 0922	▲ 0932
0843	0853	1323	0863	0873	▲ 0883	▲ 0893	▲ 0903	▲ 0913	▲ 0923	▲ 0933
0844	0854	1324	0864	0874	0884	0894	0904	0914	0924	0934
0845	0855	1325	0865	0875	0885	0895	0905	0915	0925	0935
0846	0856	1326	0866	0876	0886	0896	0906	0916	0926	0936
0847	0857	1327	0867	0877	0887	0897	0907	0917	0927	0937
0848	0858	1328	0868	0878	0888	0898	0908	0918	0928	0938
0849	0859	1329	0869	0879	0889	0899	0909	0919	0929	0939
● 1061	● 1071	● 1421	● 1111	● 1121	● 1131	● 1141	● 1431	● 1441	● 1151	● 1161
1062	1072	1422	1112	1122	1132	1142	1432	1442	1152	1162
1063	1073	1423	1113	1123	1133	1143	1433	1443	1153	1163
1064	1074	1424	1114	1124	1134	1144	1434	1444	1154	1164
1065	1075	1425	1115	1125	1135	1145	1435	1445	1155	1165
1066	1076	1426	1116	1126	1136	1146	1436	1446	1156	1166
1067	1077	1427	1117	1127	1137	1147	1437	1447	1157	1167
1068	1078	1428	1118	1128	1138	1148	1438	1448	1158	1168
1069	1079	1429	1119	1129	1139	1149	1439	1449	1159	1169

## Baumit Shades of White

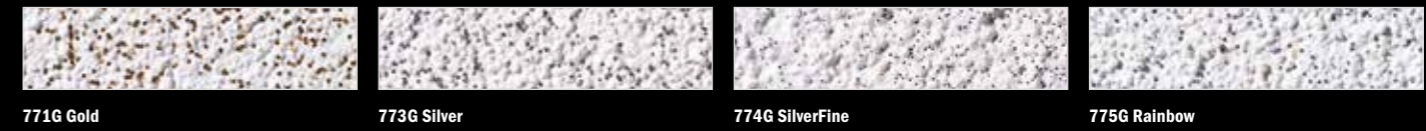


All 12 white tones available for Baumit StarTop/Color, CreativTop und SilikonTop/Color. W1200 StarWhite only available for StarTop/Color and CreativTop!

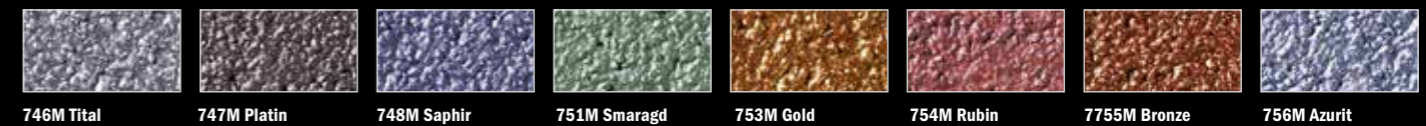
## Baumit Lasur



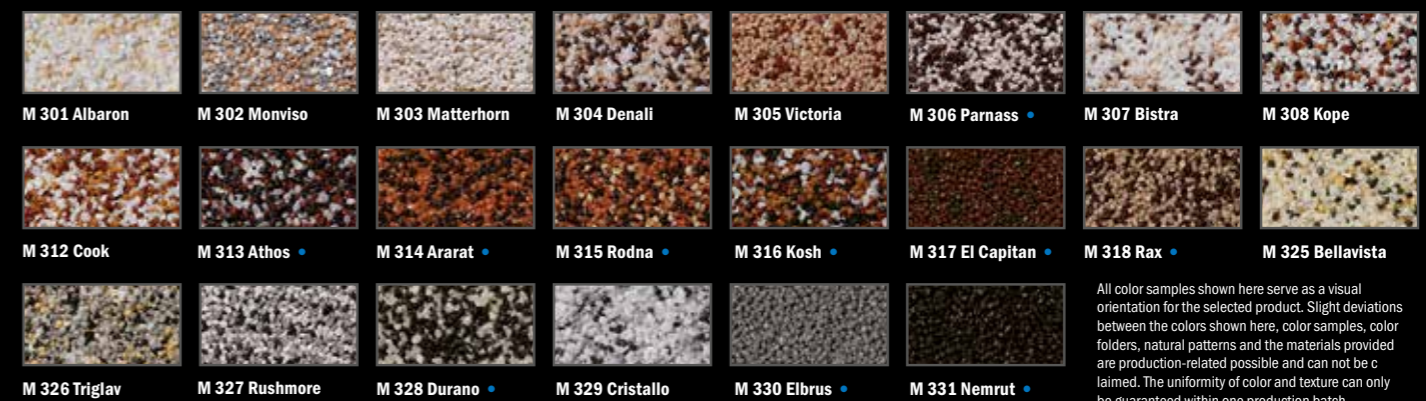
## Baumit Glitter



## Baumit Metallic



## Baumit Mosaik – Essential Line



All color samples shown here serve as a visual orientation for the selected product. Slight deviations between the colors shown here, color samples, color folders, natural patterns and the materials provided are production-related possible and can not be claimed. The uniformity of color and texture can only be guaranteed within one production batch.

## Baumit Mosaik – Natural Line



• Can be used on ETICS only with a double reinforcement layer (minimum thickness 5mm) according to the product datasheet.

Final digits 1-3: It is recommended to prime with colored Baumit PremiumPrimer.

● Colors are only available in Baumit PuraTop/Color. ▶ Colors are only available in Baumit StarTop/Color, PuraTop/Color, GranoporTop/Color and CreativTop.

▲ Colors can be used on ETICS only in Baumit PuraTop/Color, Baumit StarTop/Color & Baumit CrystalTop (available in colors 3-9 as final digit).

More information on [life.baumit.com](http://life.baumit.com).

Strong protection & beautiful façades

# Final Coatings

**Baumit façade renders and paints have been tried and tested for decades. They protect the façade from moisture, mechanical and thermal stress. As the visible shell of the house, façade plasters and paints allow houses to shine for many years.**

## BAUMIT WIKI

Resistance to all types of weather, whether it's precipitation, wind or extreme temperature differences - a façade has to withstand a lot. One of the decisive factors for this is the grain thickness. 2 mm structure instead of 1.5 mm structure results in better façade protection thanks to 33% more layer thickness. The best quality pigments can withstand even intense UV radiation - an important indication for maintaining the original radiance and color fastness for a long time. The character of a building is significantly influenced by the possibilities for façade design. Baumit final coatings meet these requirements 100% and respond to the individual needs of each customer.

**Baumit Life Colour System:** With more than 1000 different colour shades, it offers almost endless freedom when it comes to façade design. Whether you prefer delicate pastel shades, muddy colours or an intense dark look - Baumit Life enables unlimited design possibilities. The heart of the Life system consists of 114 main tones, each with an additional 8 colour shades. The system is rounded off by 12 selected white tones and 30 Mosaik tops.

## GO2morrow

The same applies to sustainability in every need. A new process in the production of the binder for Baumit façade plasters ensures that the CO2 generated during production is fed back into the process, preventing it from being released into the atmosphere. Additionally, Baumit is promoting the circular economy by increasingly using recycled buckets.



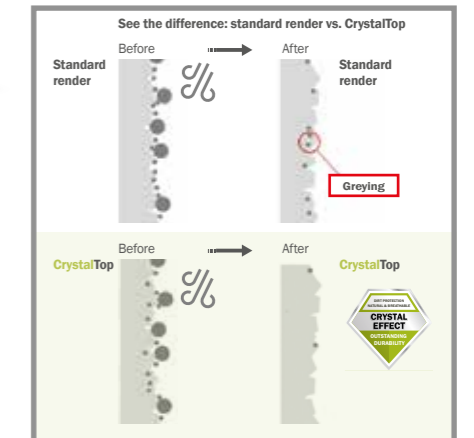
## BAUMIT CRYSTALSET - BEAT THE HEAT



**More hot days, longer heatwaves. Climate change is making façades hotter and hotter and therefore more sensitive to dirt. Baumit has developed a pioneering solution for precisely this: a natural mineral render that can withstand even high temperatures thanks to its special binder. Only the specially developed Baumit CrystalActivator 'activates' the hardening process and creates the unique CrystalEffect.**

### Only effective as a set

The innovative Baumit CrystalSet consists of the first ready-to-use mineral top coat Baumit CrystalTop in combination with the corresponding primer - the Baumit CrystalActivator. Only the combination of both products creates the self-contained and solid surface that has the unique CrystalEffect with maximum dirt resistance. Baumit CrystalSet and Baumit CrystalActivator only work as a set.



**The innovative CrystalEffect makes it particularly hard-wearing and dirt-resistant**

Conventional renders use polymeric binders that soften at moderate temperatures (approx. 20 °C), allowing dirt particles to adhere to the surface.



Scan to watch the video

**NEW**

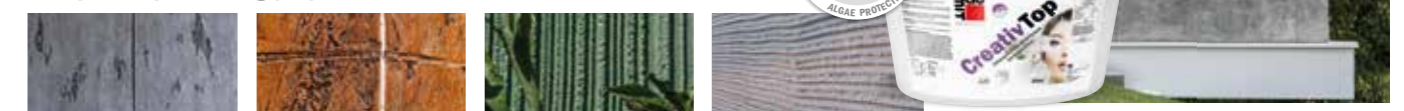


## BAUMIT CREATIVTOP

### Design variety for the façade

Unleash your creativity with Baumit CreativTop, the ultimate silicone reinforced modelling render that gives you total design freedom. Whether smooth, coarse, combed, or stippled, Baumit CreativTop lets you choose from endless texture and colour combinations, bringing your façade ideas to life like never before. Its unique formula not only simplifies application but also features the Baumit Drypor Effect, ensuring a dry, clean surface even after foggy or rainy weather—reducing the risk of algae and mold. Baumit CreativTop is also available in Baumits most brilliant white tone - Baumit StarWhite, for an impeccable, striking finish.

- Functional re-drying effect (Drypor)
- Unlimited design possibilities
- Improved processing properties



## The right solution for every need.

### Perfect solution for universal use



- ✓ Great weather resistance
- ✓ Easy to use and apply
- ✓ High breathability

Baumit SilikonTop and SilikonColor

### For excellent weather protection



- ✓ Quick drying Drypor effect technology
- ✓ High algae resistance
- ✓ Ideal for harsh environments

Baumit StarTop and StarColor

### Highest protection against dirt



- ✓ Ultimate colour fastness
- ✓ 2 x algae protection over standard Top coats
- ✓ Natural and extremely breathable

Baumit CrystalSet





The perfect final coating

# Baumit Façade Paints

The table below provides a comprehensive overview of the best façade paints for every application. Compare and select products based on their key features, and find the ideal solution for your project. We've highlighted the most important characteristics at a glance, so you can quickly identify the product that offers the perfect balance of durability, breathability, and weather resistance.

Colour isn't just colour! At Baumit, we understand that every project has unique needs, which is why we offer a wide range of façade paints to suit every requirement.



	Baumit StarColor	Baumit SilikonColor	Baumit GranoporColor	Baumit PuraColor
	■ functional drying effect	■ strong weather protection	■ cost-effective	■ intense color
	Page 18	Page 18	Page 19	Page 19
<b>Features</b>	Drypor-Effect; Surface modelled on coral; particularly low soiling; increased protection against algae and fungi	Proven quality; high weather protection; open to diffusion and robust; best processing properties	Robust synthetic resin plaster; weather-resistant and proven	intensive colour; high-quality formulation for maximum colour stability; suitable for the entire Baumit Life colour range
<b>Advantages</b>	<ul style="list-style-type: none"> <li>particularly strong</li> <li>particularly safe</li> <li>safe in processing</li> </ul>	<ul style="list-style-type: none"> <li>strong weather protection</li> <li>strong moisture protection</li> <li>resistant</li> </ul>	<ul style="list-style-type: none"> <li>weatherproof</li> <li>very good water repellency</li> <li>inexpensive</li> </ul>	<ul style="list-style-type: none"> <li>unlimited variety of colours</li> <li>intense colours</li> <li>cool Pigments Technology</li> </ul>
<b>Colour shades</b>	Base colour W1200 (StarWhite) <b>Baumit Life</b> – see labelling, Page 8-13	Base colour 0019 (White) <b>Baumit Life</b> – all colour shades, Page 8-13	Base colour 0019 (White) <b>Baumit Life</b> – see labelling, Page 8-13	Base colour 0019 (White) <b>Baumit Life</b> – see labelling, Page 8-13
<b>Density</b>	1 l ≈ approx. 1,6 kg	1 l ≈ approx. 1,6 kg	1 l ≈ approx. 1,6 kg	1 l ≈ approx. 1,4 kg
<b>Consumption</b>	ca. 0,30-0,35 l/m <sup>2</sup> for 2 coatings	ca. 0,30-0,35 l/m <sup>2</sup> for 2 coatings	ca. 0,30-0,35 l/m <sup>2</sup> for 2 coatings	ca. 0,30-0,35 l/m <sup>2</sup> for 2 coatings
<b>Dirt resistance</b>	■ ■ ■ ■	■ ■	■ ■	■ ■ ■
<b>Durability</b>	■ ■ ■ ■ ■	■ ■ ■	■ ■ ■	■ ■ ■ ■ ■
<b>Water vapour permeability</b>	■ ■ ■ ■ ■	■ ■ ■ ■	■ ■ ■	■ ■ ■
<b>Colour variety</b>	■ ■ ■ ■	■ ■ ■	■ ■ ■ ■	■ ■ ■ ■ ■
<b>Water repellency</b>	■ ■ ■ ■	■ ■ ■ ■ ■	■ ■ ■	■ ■ ■ ■ ■
<b>Airless application</b>	Yes	Yes	Yes	Yes
<b>Primer</b>	<b>Baumit MultiPrimer</b>	<b>Baumit MultiPrimer</b>	<b>Baumit MultiPrimer</b>	<b>Baumit MultiPrimer</b>

	Baumit SilikatColor	Baumit Metallic	Baumit Glitter	Baumit Lasur	
	■ breathable	■ crack-bridging	■ glittery	■ matt glaze	
	Page 19	Page 20	Page 20	Page 21	
<b>Features</b>	popular for decades; mineral; open to diffusion; for almost every application	Highly resistant, high-quality metallic coating; available in 8 brilliant colours	Ready-to-use, high-quality coating with elegant metallic glitter; available in 4 variants	Matt and ready-to-use glaze; 11 colour shades for individual façade design	<b>Features</b>
<b>Advantages</b>	<ul style="list-style-type: none"> <li>breathable</li> <li>mineral</li> <li>proven façade protection</li> </ul>	<ul style="list-style-type: none"> <li>noble gloss level</li> <li>modern design</li> <li>highly resistant</li> </ul>	<ul style="list-style-type: none"> <li>glittering and elegant</li> <li>decorative and unusual</li> <li>customised design</li> </ul>	<ul style="list-style-type: none"> <li>matt</li> <li>decorative façade design</li> <li>customised design</li> </ul>	<b>Advantages</b>
<b>Colour shades</b>	Base colour 0019 (White) <b>Baumit Life</b> – see labelling, Page 8-13	<b>8 selected metallic colours</b> Page 8-13	<b>4 selected design colours</b> Page 8-13	<b>11 selected colour shades</b> Page 8-13	<b>Colour shades</b>
<b>Density</b>	1 l ≈ approx. 1,6 kg	1 l ≈ approx. 1,0 kg	1 l ≈ approx. 1,0 kg	1 l ≈ approx. 1,0 kg	<b>Density</b>
<b>Consumption</b>	ca. 0,30-0,35 l/m <sup>2</sup> for 2 coatings	ca. 0,30-0,35 l/m <sup>2</sup> for 2 coatings	ca. 0,10-0,15 l/m <sup>2</sup> for 1 coating	ca. 0,08-0,10 l/m <sup>2</sup> for 1 coating	<b>Consumption</b>
<b>Dirt resistance</b>	■ ■				<b>Dirt resistance</b>
<b>Durability</b>	■ ■ ■ ■	■ ■ ■ ■	■ ■ ■ ■	■ ■ ■ ■	<b>Durability</b>
<b>Water vapour permeability</b>	■ ■ ■ ■ ■	■ ■	■ ■	■ ■	<b>Water vapour permeability</b>
<b>Colour variety</b>	■ ■ ■ ■	■ ■	■ ■	■ ■	<b>Colour variety</b>
<b>Water repellency</b>	■ ■ ■ ■	■ ■ ■	■ ■ ■	■ ■ ■	<b>Water repellency</b>
<b>Airless application</b>	Yes	No	No	No	<b>Airless application</b>
<b>Primer</b>	<b>Baumit MultiPrimer</b>				<b>Primer</b>



Beautiful & individual façades

# Baumit Façade Paints

**Superior protection, vibrant design, and lasting reliability for any façade.**

Whether you need strong weather protection, dirt-resistant surfaces, or vibrant colour design, Baumit façade paints deliver on all fronts. Each product in our range offers these benefits, with some placing a bit more emphasis on specific features. Decades of experience, high-quality materials, and advanced production methods ensure reliability and long-lasting performance.

Baumit paints are easy to apply and designed for a variety of applications, whether for new construction or renovation. With Baumit, you can trust that all products will provide a beautiful, durable finish that meets your project's needs.



## FAÇADE PAINTS



### Baumit StarColor

Ultimate weather resistant, silicone based outdoor paint solution. Featuring algae resistance and DryPor technology providing a quick drying effect after rain, fog and condensation, StarColor is ideal within harsh environments including coastal, countryside and cities.

- Ultimate weather resistant silicone based paint solution • Quick drying Drypor effect technology
- Enhanced breathable performance

■ functional drying effect

StarColor	14 l
Consumption:	approx. 0.3 – 0.35 l/m <sup>2</sup> for two coats
Yield:	approx. 40 m <sup>2</sup> /bucket for two coats
Packaging:	14 l bucket, 1 pallet = 32 buckets = 448 l
Product code:	010324

StarColor	5 l
Consumption:	approx. 0.3 – 0.35 l/m <sup>2</sup> for two coats
Yield:	approx. 14 m <sup>2</sup> /bucket for two coats
Packaging:	5 l bucket, 1 pallet = 64 buckets = 320 l
Product code:	010305



### Baumit SilikonColor

Universal silicone based ready to use outdoor paint solution for enhanced breathability. With water repellent and weather resistant technology, SilikonColor is the popular choice for a universal array of applications.

- Universal silicone based paint solution • Water repellent technology providing great weather resistance
- Enhanced breathable performance

■ strong weather protection

SilikonColor	14 l
Consumption:	approx. 0.3 – 0.35 l/m <sup>2</sup> for two coats
Yield:	approx. 40 m <sup>2</sup> /bucket for two coats
Packaging:	14 l bucket, 1 pallet = 32 buckets = 448 l
Product code:	010524

SilikonColor	5 l
Consumption:	approx. 0.3 – 0.35 l/m <sup>2</sup> for two coats
Yield:	approx. 14 m <sup>2</sup> /bucket for two coats
Packaging:	5 l bucket, 1 pallet = 64 buckets = 320 l
Product code:	010505



## FAÇADE PAINTS



### Baumit GranoporColor

Tried and trusted acrylic based outdoor paint solution. Weather resistant and water repellent, GranoporColor is a popular choice for a wide range of applications.

- Universal acrylic based paint solution • Water repellent and weather resistant technology • Wide range of colours

■ cost-effective

GranoporColor	14 l
Consumption:	approx. 0.3 – 0.35 l/m <sup>2</sup> for two coats
Yield:	approx. 40 m <sup>2</sup> /bucket for two coats
Packaging:	14 l bucket, 1 pallet = 32 buckets = 448 l
Product code:	010724

GranoporColor	5 l
Consumption:	approx. 0.3 – 0.35 l/m <sup>2</sup> for two coats
Yield:	approx. 14 m <sup>2</sup> /bucket
Packaging:	5 l bucket, 1 pallet = 64 buckets = 320 l
Product code:	010705



### Baumit PuraColor

Featuring Cool Pigments Technology designed specifically for dark and intense colour tones. PuraColor is a ready to use high quality acrylic outdoor paint solution.

- Intense colour tone acrylic paint solution • Cool pigments technology • Wide range of colours

■ intense color

PuraColor	14 l
Consumption:	approx. 0.3 – 0.35 l/m <sup>2</sup> for two coats
Yield:	approx. 40 m <sup>2</sup> /bucket for two coats
Packaging:	14 l bucket, 1 pallet = 32 buckets = 448 l
Product code:	010414

PuraColor	5 l
Consumption:	Approx. 0.3 – 0.35 l/m <sup>2</sup> for two coats
Yield:	Approx. 14 m <sup>2</sup> /bucket for two coats
Packaging:	5 l bucket, 1 pallet = 64 buckets = 320 l
Product code:	010405



### Baumit SilikatColor

Specialised silicate based paint for outdoor use providing ultimate breathability. With water repellent technology, SilikatColor is ideal for historical renovation or maintenance projects.

- Specialised silicate based paint solution • Ideal for historic renovation projects • Ultimate breathable performance

■ breathable

SilikatColor	14 l
Consumption:	approx. 0.3 – 0.35 l/m <sup>2</sup> for two coats
Yield:	approx. 40 m <sup>2</sup> /bucket for two coats
Packaging:	14 l bucket, 1 pallet = 32 buckets = 448 l
Product code:	010624

SilikatColor	5 l
Consumption:	approx. 0.3 – 0.35 l/m <sup>2</sup> for two coats
Yield:	approx. 14 m <sup>2</sup> /bucket for two coats
Packaging:	5 l bucket, 1 pallet = 64 buckets = 320 l
Product code:	010605



## DESIGN FAÇADE PAINTS


**Baumit Metallic**

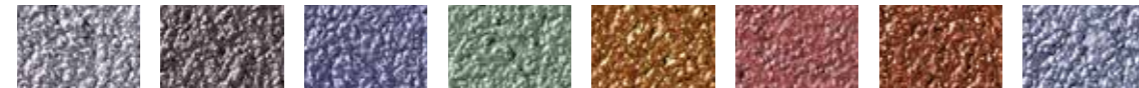
Ready to use, metallic finish paint, for decorative wall and façade design. Create modern, luxurious finish for a truly unique building design.

- Elegant glaze ▪ For decorative highlight ▪ Imitation of metallic surfaces

## metallic sheen

Metallic	14 l
Consumption:	approx. 0.3 – 0.35 l/m <sup>2</sup> on smooth surfaces
Yield:	approx. 40 m <sup>2</sup> /bucket
Packaging:	14 l bucket, 1 pallet = 32 buckets = 448 l
Product code:	010914

Metallic	5 l
Consumption:	approx. 0.3–0.35 l/m <sup>2</sup> on smooth surfaces
Yield:	approx. 14–16,5 m <sup>2</sup> /bucket
Packaging:	5 l bucket, 1 pallet = 64 buckets = 320 l
Product code:	010905



Titan 746M Platin 747M Saphir 748M Smaragd 751M Gold 753M Rubin 754M Bronze 755M Azurit 756M


**Baumit Glitter**

Ready to use transparent coating with metallic glitter. Use for decorative highlights on top of other Baumit paints and topcoats.

- Sparkling effect through sunlight ▪ Decorative and exceptional ▪ Individual design

## glittery

Glitter	14 l
Consumption:	approx. 0.10–0.15 l/m <sup>2</sup> for 1 layer
Yield:	approx. 93 – 140 m <sup>2</sup> /bucket
Packaging:	14 l bucket, 1 pallet = 32 buckets = 448 l
Product code:	010916

Glitter	5 l
Consumption:	approx. 0.10–0.15 l/m <sup>2</sup> for 1 layer
Yield:	approx. 33–50 m <sup>2</sup> /bucket
Packaging:	5 l bucket, 1 pallet = 64 buckets = 320 l
Product code:	010907



Gold 771G Silver 773G SilverFine 774G Rainbow 775G


**Baumit Finish**

Ready to use, matt, colourless seal for use with Baumit Lasur paint. Also suitable for dilution of Lasur.

- For use with Baumit Lasur ▪ Long-term protection ▪ Control of colour intensity

## matt protection

Finish	14 l
Consumption:	approx. 0.08 – 0.1 l/m <sup>2</sup> for 1 layer
Yield:	approx. 140 – 175 m <sup>2</sup> /bucket
Packaging:	14 l bucket, 1 pallet = 32 buckets = 448 l
Product code:	010918

Finish	5 l
Consumption:	approx. 0.08 – 0.1 l/m <sup>2</sup> for 1 layer
Yield:	approx. 50 – 62 m <sup>2</sup> /bucket
Packaging:	5 l bucket, 1 pallet = 64 buckets = 320 l
Product code:	010909



## DESIGN FAÇADE PAINTS


**Baumit Lasur**

Ready to use, matt glaze paint for a more decorative, creative designed façade.

- Matt ▪ For creating decorative façades ▪ Individual design

## matt glaze

Lasur	14 l
Consumption:	approx. 0.08 – 0.1 l/m <sup>2</sup>
Yield:	approx. 140 – 175 m <sup>2</sup> /bucket
Packaging:	14 l bucket, 1 pallet = 32 buckets = 448 l
Product code:	010911

Lasur	5 l
Consumption:	approx. 0.08 – 0.1 l/m <sup>2</sup>
Yield:	approx. 50–62 m <sup>2</sup> /bucket
Packaging:	5 l bucket, 1 pallet = 64 buckets = 320 l
Product code:	010902



Shine 725L Sensual 726L Impulse 727L Gentle 728L Solid 729L Mystic 730L



Fresh 731L Casual 732L Placid 733L Faith 734L Cosy 735L



# Baumit Façade Renders

The table below helps you find the perfect façade topcoat/textured finish tailored to your needs and design aspirations. It allows you to select products based on their unique strengths, ensuring you choose the best option for your specific application and style.

Additionally, it provides a clear, at-a-glance overview of the key features and characteristics of each product, making it easy to compare and identify the ideal solution for your project. Whether you need durability, weather resistance, or a specific aesthetic, Baumit's range of façade topcoats/textured finish has you covered.



**Baumit CrystalTop**      **Baumit StarTop**      **Baumit SilikonTop**      **Baumit GranoporTop**

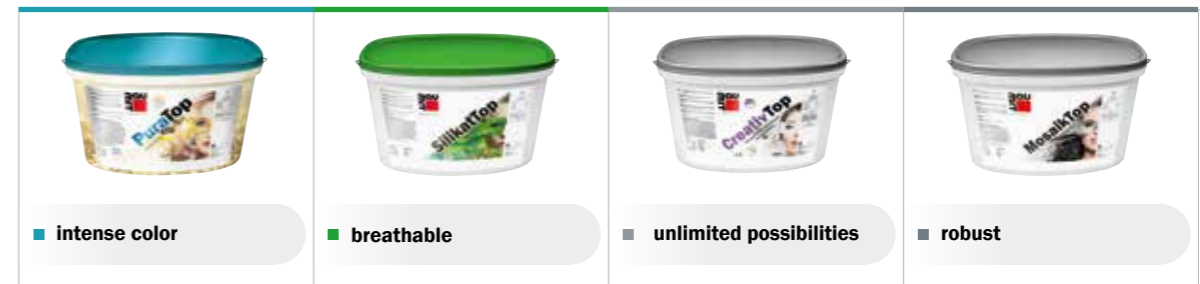


- extreme durability
- functional drying effect
- water repellent
- economical

Page 25      Page 26      Page 27      Page 28

Features	highest quality for special requirements; radiantly clean and beautiful façade plaster	Drypor-Effect; Surface modelled on coral; particularly low soiling; increased protection against algae and fungi	proven quality; high weather protection; open to diffusion and robust; best processing properties	robust synthetic resin plaster; weather-resistant and proven
Advantages	<ul style="list-style-type: none"> <li>highest protection against dirt</li> <li>outstanding durability</li> <li>natural &amp; extremely breathable</li> </ul>	<ul style="list-style-type: none"> <li>functional drying effect</li> <li>particularly low-soiling</li> <li>safe in processing</li> </ul>	<ul style="list-style-type: none"> <li>strong weather protection</li> <li>strong moisture protection</li> <li>resistant</li> </ul>	<ul style="list-style-type: none"> <li>weatherproof</li> <li>very good water repellency</li> <li>inexpensive</li> </ul>
Colour shades	Base colour 0019 (White) <b>Baumit Life</b> – see labelling, Page 8-13	Base colour W1200 (StarWhite) <b>Baumit Life</b> – see labelling, Page 8-13	Base colour 0019 (White) <b>Baumit Life</b> – see labelling, Page 8-13	Base colour 0019 (White) <b>Baumit Life</b> – see labelling, Page 8-13
Structure	Scraper 3 mm, 2 mm, 1,5 mm, Fine 1 mm	Scraper 3 mm, 2 mm, 1,5 mm	Scraper 3 mm, 2 mm, 1,5 mm Groove 3 mm, 2 mm	Scraper 3 mm, 2 mm, 1,5 mm Groove 3 mm, 2 mm
Dirt resistance	■ ■ ■ ■ ■	■ ■ ■ ■	■ ■	■ ■
Durability	■ ■ ■ ■ ■	■ ■ ■ ■	■ ■ ■	■ ■ ■
Water vapour permeability	■ ■ ■ ■ ■	■ ■ ■ ■ ■	■ ■ ■ ■	■ ■ ■
Colour variety	■ ■	■ ■ ■ ■	■ ■ ■	■ ■ ■ ■
Water repellency	■ ■ ■ ■	■ ■ ■ ■ ■	■ ■ ■ ■	■ ■ ■
Primer	<b>Baumit CrystalActivator</b>	<b>Baumit PremiumPrimer</b>	<b>Baumit UniPrimer</b>	<b>Baumit UniPrimer</b>

**Baumit PuraTop**      **Baumit SilikatTop**      **Baumit CreativTop**      **Baumit MosaikTop**



- intense color
- breathable
- unlimited possibilities
- robust

Page 28      Page 29      Page 30      Page 32

Features	intensive colour shades; high-quality formulation for maximum colour stability; suitable for the entire Baumit Life colour range	popular for decades; mineral; open to diffusion; for almost every application	unlimited possibilities for creative façade design; paste-like; coloured and ready to use, can be perfectly combined with Baumit effect coatings	Design variety for plinth surfaces; robust; safe; durable; dirt-repellent coloured stone plaster in 30 attractive colour designs	<b>Features</b>
Advantages	<ul style="list-style-type: none"> <li>unlimited variety of colours</li> <li>intense colours</li> <li>cool Pigments Technology</li> </ul>	<ul style="list-style-type: none"> <li>breathable</li> <li>mineral</li> <li>proven façade plaster</li> </ul>	<ul style="list-style-type: none"> <li>infinite design possibilities</li> <li>particularly low-soiling</li> <li>creative, colourful and unique surfaces</li> </ul>	<ul style="list-style-type: none"> <li>particularly strong and firm</li> <li>especially for the plinth</li> <li>colourful and creative</li> </ul>	<b>Advantages</b>
Colour shades	Base colour 0019 (White) <b>Baumit Life</b> – all colour shades, Page 8-13	Base colour 0019 (White) <b>Baumit Life</b> – see labelling, Page 8-13	Base colour 0019 (White) <b>Baumit Life</b> – see labelling, Page 8-13	<b>Baumit Natural &amp; Essential Line</b> Page 8-13	<b>Colour shades</b>
Structure	Scraper 3 mm, 2 mm, 1,5 mm	Scraper 3 mm, 2 mm, 1,5 mm Groove 3 mm, 2 mm	countless structural possibilities	with finely smoothed grain structure	<b>Structure</b>
Dirt resistance	■ ■ ■ ■	■ ■	■ ■ ■ ■	■ ■ ■ ■ ■	<b>Dirt resistance</b>
Durability	■ ■ ■ ■	■ ■ ■	■ ■ ■ ■	■ ■ ■	<b>Durability</b>
Water vapour permeability	■ ■ ■ ■	■ ■ ■ ■ ■	■ ■ ■ ■	■ ■	<b>Water vapour permeability</b>
Colour variety	■ ■ ■ ■ ■	■ ■ ■ ■	■ ■ ■ ■		<b>Colour variety</b>
Water repellency	■ ■ ■ ■ ■	■ ■ ■ ■	■ ■ ■ ■	■ ■ ■ ■ ■	<b>Water repellency</b>
Primer	<b>Baumit PremiumPrimer</b>	<b>Baumit UniPrimer</b>	<b>Baumit PremiumPrimer</b>	<b>Baumit PremiumPrimer</b>	<b>Primer</b>

Beautiful & individual façades

# Baumit Façade Renders

**Long-lasting protection, vibrant colours, and breathability for a flawless façade.**

Durability and colour fastness for radiant façades, as well as breathability, are the results of years of research into Baumit façade renders. For the façade to meet all the demands placed on it, all components must work in harmony. From substrate preparation to additional coatings and effect finishes, Baumit top coatings are perfectly coordinated for the lifetime of the façade. In terms of colour, Baumit Life offers a spectrum so all encompassing that it leaves nothing to be desired.



## BAUMIT CRYSTALSET



### Baumit CrystalActivator

Baumit CrystalActivator is the first component of the Baumit CrystalSet. It is essential to be used as subsubstrate preparation underneath Baumit CrystalTop. It's especially great processing properties make it easy to work with.

■ splatter-free application

<b>CrystalActivator</b>	<b>20 kg</b>
Consumption:	approx. 0,2 kg/m <sup>2</sup>
Yield:	approx. 100 m <sup>2</sup> per bucket
Packaging:	Bucket 20 kg, 1 Pal = 32 buckets = 640 kg
Product code:	020805

<b>CrystalActivator</b>	<b>5 kg</b>
Consumption:	approx. 0,2 kg/m <sup>2</sup>
Yield:	approx. 25 m <sup>2</sup> per bucket
Packaging:	Bucket 5 kg, 1 Pal = 64 buckets = 320 kg
Product code:	020804



1/2

## BAUMIT CRYSTALSET



### Baumit CrystalTop

Baumit CrystalTop is the render finish of the Baumit CrystalSet. Its unique surface is natural, breathable and due to the CrystalEffect especially dirt resistant and highly durable.

■ Highest protection against dirt ■ Outstanding durability ■ Natural & extremely breathable

2/2

■ extreme durability



<b>CrystalTop</b>	<b>K 1.5 mm</b>
Consumption:	approx. 2.5 kg/m <sup>2</sup>
Yield:	approx. 10 m <sup>2</sup> /bucket
Packaging:	25 kg bucket, 1 pallet = 32 buckets = 800 kg
Product code:	020800

<b>CrystalTop</b>	<b>K 2.0 mm</b>
Consumption:	approx. 2.9 kg/m <sup>2</sup>
Yield:	approx. 8.6 m <sup>2</sup> /bucket
Packaging:	25 kg bucket, 1 pallet = 32 buckets = 800 kg
Product code:	020801

<b>CrystalTop</b>	<b>K 3.0 mm</b>
Consumption:	approx. 3.9 kg/m <sup>2</sup>
Yield:	approx. 6.4 m <sup>2</sup> /bucket
Packaging:	25 kg bucket, 1 pallet = 32 buckets = 800 kg
Product code:	020802

<b>CrystalTop</b>	<b>R 2.0 mm</b>
Consumption:	approx. 2.6 kg/m <sup>2</sup>
Yield:	approx. 9.6 m <sup>2</sup> /bucket
Packaging:	25 kg bucket, 1 pallet = 32 buckets = 800 kg
Product code:	020806



## CRYSTALSET QUANTITY CALCULATOR



**Quantity calculator**  
The smart CrystalCalculator helps you to order the right amount of CrystalTop and CrystalActivator units. Just enter the size of your project and the calculator will do the job!

[crystal.baumit.com](http://crystal.baumit.com)



With the QR code to the CrystalSet unit calculator

## FAÇADE RENDERS


**Baumit StarTop**

Ultimate weather resistant, ready to use silicone based render top coat. Featuring algae resistance and DryPor technology providing a quick drying effect after rain, fog and condensation, StarTop is ideal within harsh environments including coastal, countryside and cities. Available in a range of aggregate sizes and suitable for hand and machine application.

- Ultimate weather resistant silicone based render solution • Quick drying Drypor effect technology
- Enhanced breathable performance

■ functional drying effect



StarTop	K 1.5 mm
Consumption:	approx. 2.5 kg/m <sup>2</sup>
Yield:	approx. 10 m <sup>2</sup> /bucket
Packaging:	25 kg bucket, 1 pallet = 32 buckets = 800 kg
Product code:	020310

StarTop	K 2.0 mm
Consumption:	approx. 2.9 kg/m <sup>2</sup>
Yield:	approx. 8.6 m <sup>2</sup> /bucket
Packaging:	25 kg bucket, 1 pallet = 32 buckets = 800 kg
Product code:	020312

StarTop	K 3.0 mm
Consumption:	approx. 3.9 kg/m <sup>2</sup>
Yield:	approx. 6.4 m <sup>2</sup> /bucket
Packaging:	25 kg bucket, 1 pallet = 32 buckets = 800 kg
Product code:	020313



## WINTER ADDITIVE


**Baumit SpeedTop Star**

Ready-to-use additive for StarTop. Provides accelerated film-forming properties, enhanced durability on the façade in high humidity and low temperatures, as well as in fog. Can be added in temperatures of >+1°C and <15°C and with relative humidity of <95%.

SpeedTop Star	400 ml
Consumption:	0.4 l per 25 kg material
Product code:	971430

## FAÇADE RENDERS


**Baumit SilikonTop**

Universal silicone based ready to use render top coat for enhanced breathability. With water repellent and weather resistant technology, SilikonTop is the popular choice for a universal array of applications. Available in a range of aggregate sizes for different finishes and suitable for both hand and machine application.

- Universal silicone based render solution • Water repellent technology providing great weather resistance
- Enhanced breathable performance

■ water repellent



SilikonTop	K 1.5 mm
Consumption:	approx. 2.5 kg/m <sup>2</sup>
Yield:	approx. 10 m <sup>2</sup> /bucket
Packaging:	25 kg bucket, 1 pallet = 32 buckets = 800 kg
Product code:	020391

SilikonTop	K 2.0 mm
Consumption:	approx. 2.9 kg/m <sup>2</sup>
Yield:	approx. 8.6 m <sup>2</sup> /bucket
Packaging:	25 kg bucket, 1 pallet = 32 buckets = 800 kg
Product code:	020392

SilikonTop	K 3.0 mm
Consumption:	approx. 3.9 kg/m <sup>2</sup>
Yield:	approx. 6.4 m <sup>2</sup> /bucket
Packaging:	25 kg bucket, 1 pallet = 32 buckets = 800 kg
Product code:	020393

SilikonTop Fine	K 1.0 mm*
Consumption:	approx. 2.0 kg/m <sup>2</sup>
Yield:	approx. 12.5 m <sup>2</sup> /bucket
Packaging:	25 kg bucket, 1 pallet = 32 buckets = 800 kg
Product code:	021001



\*The structure is only suitable for small areas and façade details

## WINTER ADDITIVE


**Baumit SpeedTop**

Ready to use additive for SilikonTop and GranoporTop. Provides accelerated film forming properties, enhanced durability on the façade in high humidity and low temperatures, as well as in fog. Can be added in temperatures of >+1°C and <15°C and with relative humidity of <95%.

SpeedTop	250 ml
Consumption:	One bottle (= 250 ml) per 25 kg SilikonTop or GranoporTop
Product code:	971414



## FAÇADE RENDERS


**Baumit GranoporTop**

Tried and trusted acrylic based, breathable render top coat. Weather resistant and water repellent, GranoporTop is a popular choice for a wide range of applications. Ready to use, available in a choice of aggregate sizes for different finishes, GranoporTop is suitable for both hand and machine application.

- Universal acrylic based render solution • Water repellent and weather resistant technology • Wide range of colours

■ economical


**GranoporTop K 1.5 mm**

Consumption: Approx. 2.5 kg/m<sup>2</sup>  
 Yield: Approx. 10 m<sup>2</sup>/bucket  
 Packaging: 25 kg bucket, 1 pallet = 32 buckets = 800 kg  
 Product code: 020791

**GranoporTop K 2.0 mm**

Consumption: Approx. 2.9 kg/m<sup>2</sup>  
 Yield: Approx. 8.6 m<sup>2</sup>/bucket  
 Packaging: 25 kg bucket, 1 pallet = 32 buckets = 800 kg  
 Product code: 020792

**GranoporTop K 3.0 mm**

Consumption: Approx. 3.9 kg/m<sup>2</sup>  
 Yield: Approx. 6.4 m<sup>2</sup>/bucket  
 Packaging: 25 kg bucket, 1 pallet = 32 buckets = 800 kg  
 Product code: 020793



## FAÇADE RENDERS


**Baumit PuraTop**

Featuring Cool Pigments Technology designed specifically for dark and intense colour tones. PuraTop is a ready to use high quality acrylic render top coat with enhanced breathability. Available in a range of aggregate sizes for different finishes and suitable for both hand and machine application.

- Intense colour tone acrylic render solution • Cool pigments technology • Enhanced breathable performance

■ intense colour


**PuraTop K 1.5 mm**

Consumption: approx. 2.5 kg/m<sup>2</sup>  
 Yield: approx. 10 m<sup>2</sup>/bucket  
 Packaging: 25 kg bucket, 1 pallet = 32 buckets = 800 kg  
 Product code: 021616

**PuraTop K 2.0 mm**

Consumption: approx. 2.9 kg/m<sup>2</sup>  
 Yield: approx. 8.6 m<sup>2</sup>/bucket  
 Packaging: 25 kg bucket, 1 pallet = 32 buckets = 800 kg  
 Product code: 021620

**PuraTop K 3.0 mm**

Consumption: approx. 3.9 kg/m<sup>2</sup>  
 Yield: approx. 6.4 m<sup>2</sup>/bucket  
 Packaging: 25 kg bucket, 1 pallet = 16 buckets = 400 kg  
 Product code: 021630



## FAÇADE RENDERS


**Baumit SilikatTop**

Ready to use specialised silicate based render top coat solution for ultimate breathability. With water repellent technology, SilikatTop is available in a range of aggregate sizes and is ideal for historical renovation or maintenance projects. Suitable for hand and machine application.

- Specialised silicate based render solution • Ideal for historic renovation projects • Ultimate breathable performance

■ breathable


**SilikatTop K 1.5 mm**

Consumption: approx. 2.5 kg/m<sup>2</sup>  
 Yield: approx. 10 m<sup>2</sup>/bucket  
 Packaging: 25 kg bucket, 1 pallet = 32 buckets = 800 kg  
 Product code: 020691

**SilikatTop K 2.0 mm**

Consumption: approx. 2.9 kg/m<sup>2</sup>  
 Yield: approx. 8.6 m<sup>2</sup>/bucket  
 Packaging: 25 kg bucket, 1 pallet = 32 buckets = 800 kg  
 Product code: 020692

**SilikatTop K 3.0 mm**

Consumption: approx. 3.9 kg/m<sup>2</sup>  
 Yield: approx. 6.4 m<sup>2</sup>/bucket  
 Packaging: 25 kg bucket, 1 pallet = 32 buckets = 800 kg  
 Product code: 020693



## FAÇADE RENDERS



### Baumit CreativTop

With a host of effects, colours and techniques, CreativTop provides endless design opportunities. Featuring algae resistance and DryPor technology providing a quick drying effect after rain, fog and condensation, CreativTop is durable too. Produced using silicone resin, CreativTop is ready to use and available in a wide range of aggregate sizes, according to the required finish and suitable for hand and machine application.

■ unlimited possibilities

- Endless creative, colourful and unique design possibilities
- Quick drying Drypor effect technology
- Enhanced breathable performance surfaces



#### CreativTop Max 4.0 mm

Consumption: approx. 5.0 – 6.2 kg/m<sup>2</sup>  
 Yield: approx. 4.0 – 5.0 m<sup>2</sup>/bucket  
 Packaging: 25 kg bucket, 1 pallet = 32 buckets = 800 kg  
 Product code: 020994

#### CreativTop Trend 3.0 mm

Consumption: approx. 4.2 – 6.2 kg/m<sup>2</sup>  
 Yield: approx. 4.0 – 5.9 m<sup>2</sup>/bucket  
 Packaging: 25 kg bucket, 1 pallet = 32 buckets = 800 kg  
 Product code: 020993

#### CreativTop Vario 1.5 mm

Consumption: approx. 2.5 – 5.0 kg/m<sup>2</sup>  
 Yield: approx. 5.0 – 10.0 m<sup>2</sup>/bucket  
 Packaging: 25 kg bucket, 1 pallet = 32 buckets = 800 kg  
 Product code: 020996

#### CreativTop Fine 1.0 mm

Consumption: approx. 2.9 – 4.2 kg/m<sup>2</sup>  
 Yield: approx. 5.9 – 8.6 m<sup>2</sup>/bucket  
 Packaging: 25 kg bucket, 1 pallet = 32 buckets = 800 kg  
 Product code: 020991

#### CreativTop Pearl 0.5 mm

Consumption: approx. 1.5 – 3.5 kg/m<sup>2</sup>  
 Yield: approx. 7.1 – 16.6 m<sup>2</sup>/bucket  
 Packaging: 25 kg bucket, 1 pallet = 32 buckets = 800 kg  
 Product code: 020995

#### CreativTop Silk 0.2 mm

Consumption: approx. 2.4 – 4.0 kg/m<sup>2</sup>  
 Yield: approx. 6.25 – 10.0 m<sup>2</sup>/bucket  
 Packaging: 25 kg bucket, 1 pallet = 32 buckets = 800 kg  
 Product code: 020992



Wood effect



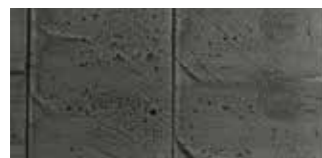
Stencil effect



Bark effect



Rust effect



Shingle effect



Linen effect



Marble effect



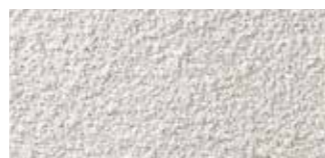
Concrete effect



Sandstone effect



Broom coating technique



Spraying technology



Slurry technology



**LIFE CHALLENGE LJUBLJANA**  
 Located in vineyards in Southeast Styria, VINO.TAKE resembles a sculpture in harmony with the colours of the surrounding landscape. Utilising the CreativTop product range, this project won the Stunned By Texture category at the 2024 Life Challenge.



## FAÇADE RENDERS



### Baumit MosaikTop

Ready-to-use, acrylic based render for external use. Coloured quartz sand specifically designed for use at a buildings splash zone and for individual design elements. See product data sheet for recommended primers.

- Coated and coloured quartz sand
- Natural and authentic stone look
- Impact resistant

robust



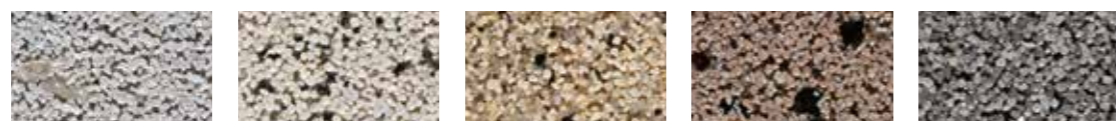
#### MosaikTop – Natural Line

Consumption: approx. 4.5 kg/m<sup>2</sup>  
 Yield: approx. 5.5 m<sup>2</sup>/bucket  
 Packaging: 25 kg bucket, 1 pallet = 32 buckets = 800 kg

#### MosaikTop – Essential Line

Consumption: approx. 5.5 kg/m<sup>2</sup>  
 Yield: approx. 4.5 m<sup>2</sup>/bucket  
 Packaging: 25 kg bucket, 1 pallet = 32 buckets = 800 kg

#### Mosaik – Natural Line



M 337 **Montblanc** Product code: 021372  
 M 338 **Olympus** Product code: 021373  
 M 339 **Castle** Product code: 021374  
 M 340 **Babia** Product code: 021375  
 M 341 **Rocky** Product code: 021376



M 342 **Everest** Product code: 021377  
 M 343 **Etna** Product code: 021378  
 M 344 **Vesuvius** Product code: 021379

- Can be used on EWI only with a double reinforcement layer (minimum thickness 5mm) according to the product datasheet.

## FAÇADE RENDERS

#### Mosaik – Essential Line



M 301 **Albaron** Product Code: 021300  
 M 302 **Monviso** Product Code: 021301  
 M 303 **Matterhorn** Product Code: 021302  
 M 304 **Denali** Product Code: 021303  
 M 305 **Victoria** Product Code: 021304



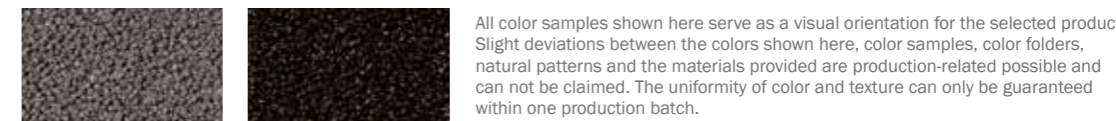
M 306 **Parnass** Product Code: 021305  
 M 307 **Bistra** Product Code: 021306  
 M 308 **Kope** Product Code: 021307  
 M 312 **Cook** Product Code: 021311  
 M 313 **Athos** Product Code: 021312



M 314 **Ararat** Product Code: 021313  
 M 315 **Rodna** Product Code: 021314  
 M 316 **Kosh** Product Code: 021315  
 M 317 **El Capitan** Product Code: 021316  
 M 318 **Rax** Product Code: 021317



M 325 **Bellavista** Product Code: 021324  
 M 326 **Triglav** Product Code: 021325  
 M 327 **Rushmore** Product Code: 021326  
 M 328 **Durano** Product Code: 021327  
 M 329 **Cristallo** Product Code: 021328



M 330 **Elbrus** Product Code: 021329  
 M 331 **Nemrut** Product Code: 021299

All color samples shown here serve as a visual orientation for the selected product. Slight deviations between the colors shown here, color samples, color folders, natural patterns and the materials provided are production-related possible and can not be claimed. The uniformity of color and texture can only be guaranteed within one production batch.

- Can be used on EWI only with a double reinforcement layer (minimum thickness 5mm) according to the product datasheet.

## CLASSIC RENDER FINISHES



mineral topcoat



### Baumit Classico Special

Mineral based decorative topcoat render providing decoration and protection to façades or internal finishes. Suitable for hand or machine application. Suitable for use as a part of all Baumit Systems. Requires painting with Baumit 'Color' product.

- Internal and external use
- Hand or machine application

#### SEP 01 - 1mm 25kg

Consumption: approx. 2.2kg/m<sup>2</sup>  
 Yield: approx. 11.4m<sup>2</sup>/bag  
 Packaging: 25kg, 1 pallet = 42 bags = 1050kg  
 Product code: 030401 (White) 030491 (Coloured)

#### SEP 02 - 2mm 25kg

Consumption: approx. 3.3kg/m<sup>2</sup>  
 Yield: approx. 7.6m<sup>2</sup>/bag  
 Packaging: 25kg, 1 pallet = 42 bags = 1050kg  
 Product code: 030402 (White) 030492 (Coloured)

#### SEP 03 - 3mm 25kg

Consumption: approx. 4.0kg/m<sup>2</sup>  
 Yield: approx. 6.3m<sup>2</sup>/bag  
 Packaging: 25kg, 1 pallet = 42 bags = 1050kg  
 Product code: 030403 (White) 030493 (Coloured)

#### SEP 04 - 4mm 25kg

Consumption: approx. 5.5kg/m<sup>2</sup>  
 Yield: approx. 4.5m<sup>2</sup>/bag  
 Packaging: 25kg, 1 pallet = 42 bags = 1050kg  
 Product code: 030404 (White) 030494 (Coloured)

# Baumit Primers

The table below helps you find the ideal Baumit primer for every type of substrate and application. You can easily select products based on their specific use and the substrate you're working with, ensuring you get the perfect primer for your needs.

This table provides a clear, at-a-glance overview of each primer's intended use and benefits for different surfaces, making it simple to compare options and choose the best solution for your project. Whether you're preparing masonry, concrete, or other substrates, Baumit's range of primers is designed to deliver optimal results and ensure a strong, lasting foundation.



SUBSTRATE PRIMERS					
	SuperPrimer	MultiPrimer	EasyPrimer	FillPrimer	SanovaPrimer
	for non-absorbent substrates	for paints and fillers	for paints and fillers	for paints	for renovation
	■ for critical substrates	■ surface hardening	■ diffusion open	■ fiber-reinforced	■ mineral solidifying
<b>Area</b>	outside/inside	outside/inside	outside/inside	outside/inside	outside/inside
<b>Usage</b>	as a bonding bridge on critical, non-absorbent substrates for Baumit plasters, leveling compounds and Baumacol products in the system	penetrating primer concentrate for paint systems and leveling compounds to solidify chalking, sanding, mineral and organic substrates	penetrating primer for paint systems and leveling compounds to consolidate chalking, sanding, mineral and organic substrates as well as for refreshing weathered coloured stone plasters	crack-filling primer for subsequent coating systems on mineral and organic substrates	penetrating primer and plaster stabilizer on mineral substrates as well as dilution for Baumit SanovaColor
<b>Benefits</b>	<ul style="list-style-type: none"> <li>universal adhesive bridge</li> <li>especially for weak and non-absorbent surfaces</li> <li>solvent-free</li> </ul>	<ul style="list-style-type: none"> <li>compacting surface</li> <li>universal use</li> <li>diffusion open</li> </ul>	<ul style="list-style-type: none"> <li>for absorbent and chalking surfaces</li> <li>open to diffusion</li> <li>EC 1 plus quality</li> </ul>	<ul style="list-style-type: none"> <li>crack-filling</li> <li>fiber-reinforced</li> <li>solvent free</li> </ul>	<ul style="list-style-type: none"> <li>solidifying surfaces</li> <li>for mineralic substrates</li> <li>silicate based</li> </ul>
<b>Application</b>	ready to use	can be diluted 1: 1 to 1: 5	can be diluted up to a maximum of 1: 2	ready to use	can be diluted up to a maximum of 1: 1
<b>Shade</b>	yellow	green	transparent	white	transparent
<b>Features</b>	extreme adhesion, slightly covering, coarse filled	concentrate, not covering, absorbent, slightly solidifying	absorbent, slightly solidifying	crack bridging up to 0.5 mm, covering, fiber-reinforced	silicate, good solidifying
	see page 36	see page 36	see page 72	see page 36	see page 36

TOP COAT PRIMERS		TREATMENTS			
PremiumPrimer	UniPrimer	FungoFluid	SperrGrund	AntiSulfat	
for Baumit Tops & KlimaDekor	for Baumit Tops & KlimaDekor	for special treatments	for special treatments	for renovation	
■ high quality and dyeable	■ proven quality	■ against algae & fungi	■ white pigmented	■ removal of the sintered skin	
outside/inside	outside/inside	outside	outside/inside	outside/inside	<b>Area</b>
for better adhesion and structure on reinforced mortars for EWl, or plasters or flooring products	for better adhesion and structure on reinforced mortars for EWl, or plasters or flooring products	renovation solution for algae and fungus-infested façade surfaces	against bleeding substances from substrates	for chemical pretreatment of sulphates and chlorides	<b>Usage</b>
<ul style="list-style-type: none"> <li>absorption regulator</li> <li>ideal bonding agent</li> <li>for a perfect structure</li> </ul>	<ul style="list-style-type: none"> <li>regulates absorption</li> <li>proven and safe</li> <li>solvent-free</li> </ul>	<ul style="list-style-type: none"> <li>for beautiful façades</li> <li>against algae and fungi</li> <li>ready to use</li> </ul>	<ul style="list-style-type: none"> <li>against bleeding substances</li> <li>white pigmented</li> <li>outside/inside</li> </ul>	<ul style="list-style-type: none"> <li>for chemical salt treatment</li> <li>pre-treatment of surfaces contaminated with salt</li> <li>before Baumit renovation plaster systems</li> </ul>	<b>Benefits</b>
ready to use	ready to use	ready to use	ready to use	ready to use	<b>Application</b>
white, can be colored, recommended for Life ending digits 1-3	white	transparent	white	transparent	<b>Shade</b>
highly coarse filled for a well structured surface	coarse filled, good covering,	disinfectant, with protective deposit	slightly covering, unfilled, blocking	aqueous solution, transparent	<b>Features</b>
see page 37	see page 37	see page 37	see page 72	see page 37	



## PRIMERS



### Baumit SuperPrimer

Ready-to-use, high quality, solvent-free primer filled with quartz sand, especially for weak and non-absorbent surfaces on walls and floors indoor and outdoor.

- Universal adhesive bridge • Especially for weak and non-absorbent surfaces • Solvent-free



<b>SuperPrimer</b>	<b>20 kg</b>
Consumption:	approx. 0.3 kg/m <sup>2</sup> (depending on substrate)
Yield:	approx. 40 – 60 m <sup>2</sup> /bucket (depending on substrate)
Packaging:	20 kg bucket, 1 pallet = 32 buckets = 640 kg
Product code:	040326



### Baumit MultiPrimer

Water vapour permeable primer for solidification of mineral and organic surfaces, before application of Baumit façade renders and paints. Ideal for high suction backgrounds.

- Compacting surface • Universal use • Diffusion open



<b>MultiPrimer</b>	<b>10 l</b>
Consumption:	approx. 0.10 – 0.25 /m <sup>2</sup> (depending on dilution)
Yield:	approx. 40 – 100 m <sup>2</sup> /canister
Packaging:	10 l canister, 1 pallet = 40 canisters = 400 l
Product code:	040510



### Baumit FillPrimer

Ready-to-use, crack-filling, fiber-reinforced, universal primer for outside and inside. Fills and covers cracks up to 0.5 mm. Solvent free.

- Crack-filling • Fiber-reinforced • Solvent free



<b>FillPrimer</b>	<b>25 kg</b>
Consumption:	approx. 0.30 kg/m <sup>2</sup> (on smooth surfaces applied in 1 layer)
Yield:	approx. 80 m <sup>2</sup> /bucket
Packaging:	25 kg bucket, 1 pallet = 32 buckets = 800 kg
Product code:	040100



### Baumit SanovaPrimer

Silicate primer for stabilising sandy, mineral plasters. Suitable for lime/cement and chalky plasters. Ideal primer for historical renovation projects.

- Solidifying surfaces • For mineralic substrates • Silicate based



<b>SanovaPrimer</b>	<b>10 l</b>
Consumption:	approx. 0,20 l/m <sup>2</sup> per coat
Yield:	approx. 50 m <sup>2</sup> /canister
Packaging:	10 l canister, 1 pallet = 40 canisters = 400 l
Product code:	040711

## PRIMERS



### Baumit PremiumPrimer

Ready-to-use, universally usable primer to equalise absorption and acts as bonding agent for all Baumit EWI and plaster systems. The added grain makes it easier to apply and structure all top coats. Can be coloured - see product data sheet for detailed information.

- Excellent absorption equaliser • Ideal bonding agent • For a perfect structure



<b>PremiumPrimer</b>	<b>20 kg</b>
Consumption:	approx. 0.2 – 0.4 kg/m <sup>2</sup> depending on the substrate
Yield:	approx. 50 – 100 m <sup>2</sup> /bucket
Packaging:	20 kg bucket, 1 pallet = 32 buckets = 640 kg
Product code:	040120

<b>PremiumPrimer</b>	<b>5 kg</b>
Consumption:	approx. 0.2 – 0.4 kg/m <sup>2</sup> depending on the substrate
Yield:	approx. 12.5 - 20 m <sup>2</sup> /bucket
Packaging:	5 kg bucket, 1 pallet = 64 buckets = 320 kg
Product code:	040105



### Baumit UniPrimer

Ready-to-use, all-purpose primer to regulate absorption and improve adhesion for all Baumit render finishes and Baumit façade paints.

- Regulates absorption • Proven and safe • Solvent-free



<b>UniPrimer</b>	<b>25 kg</b>
Consumption:	approx. 0.20 – 0.4 kg/m <sup>2</sup> depending on the substrate
Yield:	approx. 62 – 125 m <sup>2</sup> /bucket
Packaging:	25 kg bucket, 1 pallet = 32 buckets = 800 kg
Product code:	040325

<b>UniPrimer</b>	<b>5 kg</b>
Consumption:	approx. 0.20 – 0.4 kg/m <sup>2</sup> depending on the substrate
Yield:	approx. 12.5 - 25 m <sup>2</sup> /bucket
Packaging:	5 kg bucket, 1 pallet = 64 buckets = 320 kg
Product code:	040305



### Baumit FungoFluid

Remediation solution for treating façade surfaces with fungal or algae growth, solvent free.

- For beautiful façades • Treatment against algae and fungi • Ready to use



<b>FungoFluid</b>	<b>5 l</b>
Consumption:	approx. 0.05 – 0.1 l / m <sup>2</sup> (ready to use)
Yield:	approx. 100 – 200 m <sup>2</sup> /canister
Packaging:	5 l canister, 1 pallet = 128 canisters = 640 l
Product code:	040731



### Baumit AntiSulfat

Aqueous solution for the chemical treatment of harmful salts (sulphates and chlorides) in masonry restoration.

<b>AntiSulfat</b>	<b>5 kg</b>
Consumption:	approx. 0.5 – 0.8 kg/m <sup>2</sup>
Yield:	approx. 6 – 10 m <sup>2</sup> /canister
Packaging:	5 kg canister, 1 pallet = 42 canister = 1.050 kg
Product code:	040741

Warm in winter, cool in summer

# EWI

The most effective measure for high living quality and low energy consumption is to optimise the insulation of the façade. The better the insulation, the higher the comfort and the lower the energy consumption and energy costs.

## BAUMIT WIKI

Insulation systems, also known as external wall insulation systems (EWI), refer to systems consisting of tested system components for insulating the outside of buildings. They represent the best future provision for every house. High breathability is a feature of the best EWI. You immediately benefit from a better quality of life and, from the very first hour, reduce energy consumption and energy costs for many decades.

A good insulation system ensures energy efficiency all year round, it reduces heating costs in winter and ensures cool walls in summer. Thermal insulation is therefore the basis for a comfortable, healthy living environment. The interior becomes a feel-good space.

Whether it's a healthy indoor climate, low heating and cooling costs or a long service life, Baumit offers the right insulation system for a wide range of requirements. Whether it's a new build or renovation.

## GO2morrow

Baumit insulation systems are sustainable from the ground up. For example, the Baumit openSystem stands out for its efficiency and resource conservation, even during production. Its excellent insulation properties provide significant energy savings over many decades.



## BAUMIT OPENSYSTEM

# 99% air for a healthy indoor climate

Whether you are building a new home or refurbishing an old one, Baumit openSystem is always the best solution. All components are highly vapour permeable and thus allow the walls to breathe.

This creates optimal living conditions whether in summer or winter. The Baumit openSystem uses EPS boards containing numerous holes of about 2 to 3 mm in diameter. These ensure the high vapour permeability and enable water vapour to be released to the outside.

### 99% air

The openSystem consists of 99% air and only a small proportion of EPS. Since static air is an extremely efficient medium in terms of thermal insulation, Baumit openSystem guarantees a super efficient thermal insulation with a minimum use of other resources.

### How it works

Both indoor temperature and humidity are important for maintaining a comfortable indoor environment. Ideally, indoor humidity levels should range between 40% and 60%. Every day, around 10 litres of water vapour need to be released from a household to the outside. The Baumit openSystem, which is highly breathable like brick, helps create a pleasant indoor climate by allowing moisture to escape effectively.

### A façade that lasts

The Baumit openSystem combines the best water vapour permeability, high performance insulation, and the innovative mineralic render Baumit CrystalSet, that ensures façades breathe and last for decades.



## BENEFITS

- Breathable and highly vapour permeable
- Reduces the risk of condensation of water vapour
- Ensures a comfortable indoor living climate

## ✓ The right solution for every need.

For commercial usage in high rise buildings



- ✓ A2 fire rated system
- ✓ Highly vapour permeable
- ✓ Sound proofing properties

Baumit StarSystem Mineral

For extreme weather resilience



- ✓ High degree of individualisation
- ✓ Fulfills the highest technical requirements
- ✓ For mineral wool, wood fibre, Baumit Resolution and EPS insulation boards

Baumit StarSystem

For best indoor climate

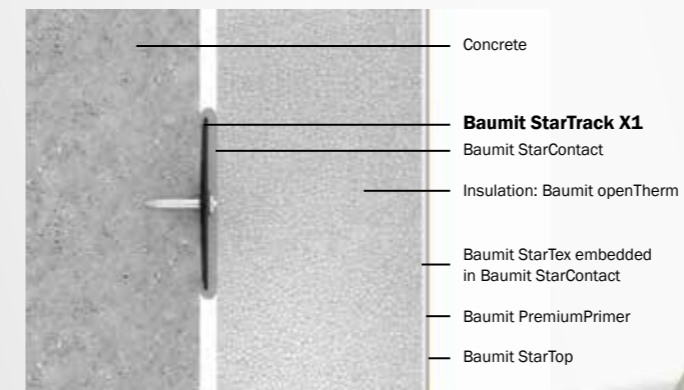


- ✓ Breathable system
- ✓ Very good thermal insulation properties
- ✓ Proven system with decades of success

Baumit openSystem

## STARTRACK X1

Supplementary mechanical fixing with the Hilti bolt-firing tool as a cost and time saving alternative to traditional anchors. For use on concrete.



Learn more about StarTrack X1:



Warm in winter, cool in summer

# Baumit EWI

The table below helps you find the perfect Baumit insulation system for every need, based on your specific requirements. You can easily select the right system by comparing their key features and benefits.

This overview provides a clear, at-a-glance look at the essential characteristics of each insulation system, making it simple to choose the best option for your project. Baumit's range of insulation systems offers the ideal solution for achieving your goals.



EWI

	openSystem	O StarSystem EPS	E StarSystem Mineral	M StarSystem Resolution	R
<b>Topcoat</b>	CrystalTop	StarTop	CrystalTop	StarTop	
<b>Primer</b>	CrystalActivator	PremiumPrimer	CrystalActivator	PremiumPrimer	
<b>Basecoat</b>	StarContact White	StarContact White	StarContact White	StarContact White	
<b>Reinforcement</b>	StarTex	StarTex	StarTex	StarTex	
<b>Insulant</b>	OpenTherm	StarTherm	MineralTherm	StarTherm Resolution	
<b>Adhesive</b>	StarContact White	StarContact White	StarContact White	StarContact White	
<b>Fixing Anchor</b>	StarTrack / Baumit S / N	StarTrack / Baumit S / N	Baumit S (STR) / Baumit N	Baumit S (STR) / Baumit N	

The external wall insulation systems must be applied in accordance with Baumit recommendations and current best practice. Refer to Baumit Product Data Sheets for further information.

	StarSystem Nature	N PowerSystem	I CeramicSystem	C
<b>Topcoat</b>	CrystalTop	SilikonTop	Cladding/Ceramic S/F	Topcoat
<b>Primer</b>	CrystalActivator		CeramicFix	Primer
<b>Basecoat</b>	StarContact White	PowerFlex	StarContact	Basecoat
<b>Reinforcement</b>	StarTex	StarTex	CeramicTex / StarTex Grob	Reinforcement
<b>Insulant</b>	StarTherm Nature	StarTherm	StarTherm	Insulant
<b>Adhesive</b>	StarContact White	StarContact White	StarContact White	Adhesive
<b>Fixing Anchor</b>	Baumit S (STR) / Baumit N	StarTrack Baumit S / N	Baumit S (STR)	Fixing Anchor

The external wall insulation systems must be applied in accordance with Baumit recommendations and current best practice. Refer to Baumit Product Data Sheets for further information.

Fast & Easy

# Baunit Adhesives & Base Coats

## Unmatched Strength and Versatility for Long-Lasting Façades.

Baunit Adhesives & Base Coats are essential for achieving strong, reliable adhesion in EWI (External Wall Insulation). These products are primarily designed for gluing insulation boards securely, ensuring they adhere properly to various substrates. In addition to their main role in EWI, Baunit Adhesives & Base Coats also function effectively as reinforced base coats and fillers for concrete and rendered façades. When used as a base coat, they must meet rigorous standards to maintain the mechanical strength and durability of the insulation system over many years.



### ADHESIVES AND BASE COATS



#### Baunit StarContact White

Top quality adhesive and reinforcing mortar with white cement, especially for Baunit StarSystems. Complying, with a high degree of safety, to all parameters required by the new European Assessment Document for External Wall Insulation (EWI). Very flexible, extremely weather-resistant, with excellent workability, guaranteeing long lasting performance. Formulated for demanding applications, weather conditions during processing and demanding substrates.

- Extra flexible • White • High resistance

StarContact White	25 kg
Consumption:	As adhesive: approx. 4.0 – 5.0 kg/m <sup>2</sup> As base coat: approx. 5.0 – 6.0 kg/m <sup>2</sup>
Yield:	As adhesive: approx. 5.0 – 6.25 m <sup>2</sup> /bag As base coat: approx. 4.2 – 5.0 m <sup>2</sup> /bag
Packaging:	25 kg, 1 pallet = 42 bags = 1.050 kg
Product code:	050325

■ white

REMN



#### Baunit StarContact

Flexible, mineral-based, dry adhesive and basecoat render for Baunit EWI systems. Also suitable as a bonding mortar onto concrete. Suitable for use as a part of Baunit StarSystem, StarSystem Mineral, StarSystem Nature and Plinth System. Compliant with ETAG 004 European System Standards for EWI systems with rendering.

- Strong adhesion • Good workability • Universal application

StarContact	25 kg
Consumption:	As adhesive: approx. 4.0 – 5.0 kg/m <sup>2</sup> As base coat: approx. 5.0 – 6.0 kg/m <sup>2</sup>
Yield:	As adhesive: approx. 5.0 – 6.25 m <sup>2</sup> /bag As base coat: approx. 4.2 – 5.0 m <sup>2</sup> /bag
Packaging:	25 kg, 1 pallet = 42 bags = 1.050 kg
Product code:	050525

■ creamy and high yield

REMN



### ADHESIVES AND BASE COATS



#### Baunit MultiContact MC 55 W

Natural-white, fibre-reinforced multi-purpose bonding mortar. Suitable as a remediating render over existing stable, mineral and synthetic-resin-based plasters, renders and paintwork. Also suitable as a keying coat on concrete and insulating boards or as a finish render on concrete formwork and fair faced masonry. System component of Baunit StarSystem Nature.

- Multi-purpose contact mortar • Fibre reinforced • For all mineral substrates

MultiContact MC 55W	25 kg
Consumption:	As adhesive: approx. 4.0 – 5.0 kg/m <sup>2</sup> As base coat: approx. 5.0 – 6.0 kg/m <sup>2</sup>
Yield:	As adhesive: approx. 5.0 – 6.25 m <sup>2</sup> /bag As base coat: approx. 4.5 – 5.0 m <sup>2</sup> /bag
Grain size	0 - 1.2mm
Packaging:	25 kg, 1 pallet = 42 bags = 1.050 kg
Product code:	100125



#### Baunit PowerFlex

Ready-to-use, cement-free, fibre-reinforced, organic base coat. Specially developed for Baunit PowerSystem due to high impact resistance. Complies with all requirements of ETAG 004.

- Highly shockproof • Cement-free • Fibre-reinforced

PowerFlex	25 kg
Consumption:	approx. 4.0 – 5.0 kg/m <sup>2</sup>
Yield:	5.0 - 6.25 m <sup>2</sup> /bucket
Packaging:	25 kg bucket, 1 pallet = 32 buckets = 800 kg
Product code:	051025

### ADHESIVES AND SEALANTS



#### Baunit SupraFix

Mineral-based, dry adhesive for bonding façade insulation boards on to wooden substrates (eg. OSB, chipboard) or on to bituminous substrates.

- For timber substrates • High adhesion • Flexible

SupraFix	25 kg
Consumption:	approx. 2.0 – 4.5 kg/m <sup>2</sup>
Yield:	approx. 5.0 – 12.5 m <sup>2</sup> /bag
Packaging:	25 kg, 1 pallet = 54 bags = 1.350 kg
Product code:	051325



#### Baunit BituFix 2K

Two-component, polystyrene-filled, solvent free, for cold application rubber modified bituminous thick coating. For use in bonding Baunit Plinth Insulation board onto bituminous sealant background.

- For Plinth insulation board • For bituminous substrates

BituFix 2K	30 l
Consumption:	approx. 4 – 8 l/m <sup>2</sup>
Yield:	4 – 7.5 m <sup>2</sup> /bucket
Packaging:	30 l bucket, 1 pallet = 12 buckets = 360 l
Product code:	071130



#### Baunit DS 26 Flex

Cementitious waterproofing layer in the Plinth area. Apply with a brush, roller or trowel.

- Reliable sealing layer • Easy application • Flexible

DS 26 Flex	20 kg
Consumption:	approx. 1.2 kg/m <sup>2</sup> /mm
Yield:	approx. 8 m <sup>2</sup> /bag/mm
Packaging:	20 kg, 1 pallet = 48 bags = 960 kg
Product code:	071120



## JOINT FILLER



### Baumit Ceramic S

Hydrophobised, elasticised special joint mortar for slurry grouting of claddings (ceramic tiles and others). System component for EWI Baumit CeramicSystem.

- For non-absorbent, smooth claddings • Water repellent • Highly flexible

■ for tile façades



Ceramic S	25 kg
Consumption:	4.0 – 6.5 kg/m <sup>2</sup> (depending on format)
Grain size:	0 – 1 mm
Packaging:	25 kg, 1 pallet = 42 bags = 1.050 kg
Order amount:	min 5 bags
Product code:	Extra white 271214
Product code:	Beige white 271215
Product code:	Grey white 271216
Product code:	Sand 271217
Product code:	Silver grey 271219
Product code:	Dark grey 271220
Product code:	Anthrazit 271221
Product code:	Black 271222
Product code:	Cement grey 271218



## JOINT FILLER



### Baumit Ceramic F

Hydrophobised, elasticised special joint mortar for grouting using a jointer (brick slips and others) with joint iron. System component for EWI Baumit CeramicSystem.

- For absorbent, sensitive claddings • Water repellent • Highly flexible

■ for brick façades



Ceramic F	25 kg
Consumption:	approx. 5.0 – 7.5 kg/m <sup>2</sup> (depending on format)
Grain size:	0 – 1 mm
Processing time:	approx. 1 h
Packaging:	25 kg, 1 pallet = 42 bags = 1.050 kg
Order amount:	min 5 bags
Product code:	Extra white 271209
Product code:	Beige white 271210
Product code:	Grey white 271211
Product code:	Sand 271208
Product code:	Silver grey 271207
Product code:	Dark grey 271206
Product code:	Anthrazit 271204
Product code:	Black 271203
Product code:	Cement grey 271205

## COLOURS OF BAUMIT CERAMIC S & F



## CLADDING ADHESIVE



### Baumit CeramicFix

Water- and frost-resistant adhesive mortar for flexible bonding in using the thin-bed method. For laying ceramic tiles, brick slips, natural stone slabs and stoneware on façades. Part of the ETA approved Baumit CeramicSystem.

- Highly flexible • Good workability • Strong and durable bonding

■ flexible thin-bed bonding



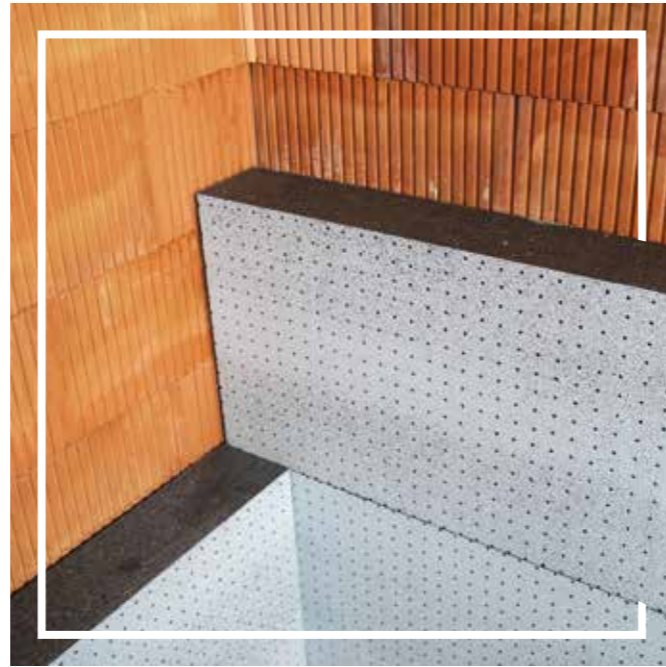
CeramicFix	25 kg
Consumption:	approx. 3.0 – 5.0kg/m <sup>2</sup> (floating-buttering method)
Processing time:	approx. 4 h
Working time:	approx. 30 min
Layer thickness:	max. 8 mm
Joints: after approx.	7 days
Packaging:	25 kg, 1 pallet = 42 bags = 1.050 kg
Product code:	271213



# Insulation Boards

## Tailored Solutions for Superior Energy Efficiency and Performance

Insulation boards vary in materials, thermal performance, and applications. Options include expanded polystyrene (EPS) and extruded polystyrene (XPS) for thermal and moisture resistance, and mineral wool for fire resistance and soundproofing. Choosing the right board depends on these factors to achieve optimal energy efficiency and performance. The Baumit openTherm EPS façade insulation board for instance is the benchmark for both new construction and thermal renovation projects. It is highly breathable, offers improved insulation performance, and is made up of up to 99% air, which also helps save valuable resources.



## EPS INSULATION BOARD



### Baumit openTherm reflectair (OpenSystem)

Grey, water vapour permeable, perforated EPS boards. Part of the ultimate highly breathable EWI system Baumit OpenSystem, with improved thermal insulation. Compliant with ETAG 004 European System Standards for EWI systems with rendering. Size: 500 x 1000mm and demanding substrates.

- High thermal insulation • Highly vapour permeable

**openTherm reflectair** / Thermal conductivity:  $\lambda = 0.031$  W/mK

Size	Packaging	Product code
60 mm	8 boards/package = 4.0 m <sup>2</sup> /pack	060160
80 mm	6 boards/package = 3.0 m <sup>2</sup> /pack	060180
100 mm	5 boards/package = 2.5 m <sup>2</sup> /pack	060110
120 mm	4 boards/package = 2.0 m <sup>2</sup> /pack	060112
140 mm	3 boards/package = 1.5 m <sup>2</sup> /pack	060114
160 mm	3 boards/package = 1.5 m <sup>2</sup> /pack	060116
180 mm	2 boards/package = 1.0 m <sup>2</sup> /pack	060118
200 mm	2 boards/package = 1.0 m <sup>2</sup> /pack	060120

### Baumit StarTherm EPS (StarSystem EPS)

Grey, square-edged, EPS boards for EWI systems. Compliant with ETAG 004 European System Standards for EWI systems with rendering. Size: 1200 x 600mm, thicknesses from 20 - 300mm.

**Grey EPS** / Thermal conductivity:  $\lambda = 0.032$  W/mK

Size	Packaging	Product code
20 mm	30 boards/pack = 21.60m <sup>2</sup> /pack	060323
30 mm	20 boards/pack = 14.40m <sup>2</sup> /pack	060335
40 mm	15 boards/pack = 10.80m <sup>2</sup> /pack	060340
50 mm	12 boards/pack = 8.64m <sup>2</sup> /pack	060350
60 mm	10 boards/pack = 7.62m <sup>2</sup> /pack	060360
70 mm	8 boards/pack = 5.76m <sup>2</sup> /pack	060385
80 mm	7 boards/pack = 5.04m <sup>2</sup> /pack	060380
90 mm	6 boards/pack = 4.32m <sup>2</sup> /pack	060390
100 mm	6 boards/pack = 4.32m <sup>2</sup> /pack	060310
120 mm	5 boards/pack = 3.60m <sup>2</sup> /pack	060312

Additional sizes available on request.

## MINERAL WOOL INSULATION BOARD



### Mineral Wool EWI Slab (StarSystem Mineral)

Non-combustible, EWI mineral wool façade insulation board complying with EN 13162. System component of Baumit StarSystem Mineral. Euroclass A1 Rated. Compliant with ETAG 004 European System Standards for EWI systems with rendering. Thicknesses of 30 - 270mm. Size: 600 x 1200mm.

**Mineral Wool EWI Slab** / Thermal conductivity:  $\lambda = 0.036$  W/mK

Size	Packaging	Product code
60 mm	40 boards = 28.8m <sup>2</sup> /pallet	060660
80 mm	30 boards = 21.6m <sup>2</sup> /pallet	060680
100 mm	24 boards = 17.28m <sup>2</sup> /pallet	060610
120 mm	20 boards = 14.4m <sup>2</sup> /pallet	060612
140 mm	18 boards = 12.96m <sup>2</sup> /pallet	060614
160 mm	16 boards = 11.52m <sup>2</sup> /pallet	060616
180 mm	12 boards = 8.64m <sup>2</sup> /pallet	060618
200 mm	12 boards = 8.64m <sup>2</sup> /pallet	060620

## PHENOLIC INSULATION BOARD



### Baumit ResolutionTherm (StarSystem Resolution)

Rigid phenolic façade insulation board complying with DIN EN 13166 faced with 3mm grey EPS layer on both surfaces. System component of EWI Baumit StarSystem Resolution. Board size: 500 x 1000mm.

**ResolutionTherm** / Thermal conductivity:  $\lambda = 0.022$  W/mK

Size	Packaging	Product code
40mm	12 boards = 8.6m <sup>2</sup> /pallet	060740
60mm	8 boards = 5.8m <sup>2</sup> /pallet	060760
80mm	6 boards = 4.3m <sup>2</sup> /pallet	060780
100mm	5 boards = 3.6m <sup>2</sup> /pallet	060710
120mm	4 boards = 2.9m <sup>2</sup> /pallet	060712

## WOOD FIBRE INSULATION BOARD



### Baumit StarTherm Nature (StarSystem Resolution)

Wood fibre façade insulation board: The core of the Baumit StarTherm Nature EWI System is the Baumit StarTherm Nature wood fibre insulation board. This multi-layered insulation board is produced without any artificial binders and is bound using the timber's own lignin. Size 1350 x 600mm.

**Wood Fibre Board** / Thermal conductivity:  $\lambda = 0.040$  W/mK

Size	Packaging	Product code
40mm	56 boards = 45.3m <sup>2</sup> /pallet	060941
60mm	38 boards = 30.7m <sup>2</sup> /pallet	060960
80mm	28 boards = 22.6m <sup>2</sup> /pallet	060980
100mm	22 boards = 17.8m <sup>2</sup> /pallet	060910
120mm	18 boards = 14.3m <sup>2</sup> /pallet	060912

## INSULATED PLINTH BOARD



### Baumit PlinthTherm XPS (PlinthSystem)

High density XPS boards for use in EWI systems in the plinth area. Board size: 1250 x 600mm Thickness: 40 - 300mm.

**PlinthTherm XPS** / Thermal conductivity:  $\lambda = 0.035$  W/mK

Size	Packaging	Product code
40mm	10 boards/ 7.5m <sup>2</sup>	060840
60mm	7 boards/ 5.25m <sup>2</sup>	060860
80mm	5 boards/ 3.75m <sup>2</sup>	060880
100mm	4 boards/ 3.00m <sup>2</sup>	060810
120mm	4 boards/ 3.00m <sup>2</sup>	060812
140mm	3 boards/ 2.25m <sup>2</sup>	060814
160mm	3 boards/ 2.25m <sup>2</sup>	060816
180mm	2 boards/ 1.50m <sup>2</sup>	060818
200mm	2 boards/ 1.50m <sup>2</sup>	060820





Safe & Strong

# Baunit Mesh & Fixings

## Secure Anchoring Without Compromising Insulation Integrity

Baunit insulation boards must not only be bonded with adhesive, but in many cases, they also need to be mechanically fixed with anchors. This can be achieved with the innovative Baunit StarTrack system or with more conventional anchors from the Baunit range. Additionally, coordinated fiberglass mesh is an integral part of the Baunit Insulation system.



### GLASS FIBRE MESH

#### Baunit StarTex Fine 160



Flexible and alkali-resistant glass fibre mesh. Tested system components for the reinforcement of Baunit renders onto Baunit EWI systems. Compliant with ETAG 004 European System Standards for EWI systems with rendering. Not for use with Baunit MonoPlus. Tear resistance > 2.0 kN/5 cm. Weight: approx. 160 g/m<sup>2</sup>

##### StarTex 160

Mesh size:	approx. 4 x 4.5mm
Consumption:	approx. 1.1m <sup>2</sup> /m <sup>2</sup>
Yield:	approx. 45m <sup>2</sup> /roll
Packaging:	Roll: 50m <sup>2</sup> (Width 1m), 1 pallet = 30 rolls = 1500m <sup>2</sup>
Product code:	070250

#### Baunit StarTex Grob/CeramicTex



Flexible and alkali-resistant glass fibre mesh. Tested system components for the reinforcement of Baunit renders onto Baunit EWI systems. Tear resistance > 2.2 kN/5 cm. Weight: approx. 200 g/m<sup>2</sup>. Used in the Baunit Ceramic systems.

##### StarTex 200

Mesh size:	approx. 6.5 x 7mm
Consumption:	approx. 1.1m <sup>2</sup> /m <sup>2</sup>
Yield:	approx. 45m <sup>2</sup> /roll
Packaging:	Roll: 50m <sup>2</sup> (Width 1m), 1 pallet = 20 rolls = 1000m <sup>2</sup>
Product code:	070275

#### Baunit StrongTex 300



Flexible and alkali-resistant, reinforced glass fibre mesh for use as an extra reinforcing layer over the normal reinforcement mesh. Tested system components. Tear resistance > 3.4 kN/5 cm. Weight: approx. 300 g/m<sup>2</sup>

##### StarTex 300

Mesh size:	approx. 6 x 6mm
Consumption:	approx. 1m <sup>2</sup> /m <sup>2</sup>
Yield:	approx. 25m <sup>2</sup> /roll
Packaging:	Roll: 25m <sup>2</sup> (Width 1m), 1 pallet = 30 rolls = 750m <sup>2</sup>
Product code:	070299

#### Baunit MonoTex



Flexible and alkali-resistant, reinforced glass fibre mesh with a 10 x 10mm mesh size. MonoTex has been specifically designed for use with Baunit MonoPlus. Weight: approx. 155 g/m<sup>2</sup>

##### MonoTex

Mesh size:	approx. 10 x 10mm
Consumption:	approx. 1.1m <sup>2</sup> /m <sup>2</sup>
Yield:	approx. 45m <sup>2</sup> /roll
Packaging:	Roll: 50m <sup>2</sup> (Width 1m), 1 pallet = 30 rolls = 1500m <sup>2</sup>
Product code:	070301

### STARTRACK

#### Baunit StarTrack X1



Additional mechanical fastening as an alternative to conventional fixing for concrete. Due to the powder-actuated tool, powered by Hilti, there is no need to drill and fix the anchor separately. Just fix Baunit StarTrack X1 in one application step.

##### StarTrack X1

Field of application:	concrete
Usage category:	A
Consumption:	min. 6 adhesive anchors/m <sup>2</sup> (1 carton for approx. 50 m <sup>2</sup> )
Carton:	400 pieces, 1 pallet = 24 cartons = 9.600 pcs.
Product code:	070541

#### Baunit StarTrack Orange



Supplementary mechanical fixing as an alternative to traditional fixings, for use with perforated building materials, aerated concrete and critical backgrounds. Existing render up to max. 40mm can be bridged. Drill diameter: 8mm.

##### StarTrack Orange

Anchor depth in supporting background:	> 40mm/ > 65mm in aerated concrete
Shaft length:	88mm
Bore hole depth:	min. 95mm
Consumption:	6 StarTrack/m <sup>2</sup> (1 Carton for approx. 50m <sup>2</sup> )
Quantity per box:	Carton 300 pcs, 1 pallet = 12 cartons = 3600 pcs
Product code:	070540

#### Baunit StarTrack Red



Supplementary mechanical fixing as an alternative to traditional fixings. For use with perforated and solid masonry and concrete. Existing render up to max. 40mm can be bridged. Drill diameter: 8mm.

##### StarTrack Red

Anchor depth in supporting background:	> 40mm
Shaft length:	88mm
Bore hole depth:	min. 95mm
Consumption:	6 StarTrack/m <sup>2</sup> (1 Carton for approx. 50m <sup>2</sup> )
Quantity per box:	Carton 300 pcs.
Product code:	070510

#### Baunit StarTrack Blue



Supplementary mechanical fixing as an alternative to traditional fixings. For use on concrete and stone backgrounds. Drill diameter: 8mm.

##### StarTrack Blue

Anchor depth in supporting background:	> 40mm
Shaft length:	55mm
Bore hole depth:	min. 60mm
Consumption:	6 StarTrack/m <sup>2</sup> (1 Carton for approx. 50m <sup>2</sup> )
Quantity per box:	Carton 300 pcs
Product code:	070520

#### Baunit StarTrack Duplex



Additional mechanical fastening as an alternative to conventional fixing for concrete. Due to the powder-actuated tool, powered by Hilti, there is no need to drill and fix the anchor separately. Just fix Baunit StarTrack X1 in one application step.

##### StarTrack Duplex

Anchor depth in supporting background:	> 40mm
Shaft length:	138mm
Bore hole depth:	min. 150 - 155mm
Consumption:	6 StarTrack/m <sup>2</sup> (1 Carton for approx. 33m <sup>2</sup> )
Quantity per box:	Carton 200 pcs
Product code:	070531



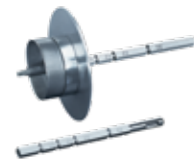
## SYSTEM FIXINGS



### Baumit S (replaces STR U 2G)

Plate screw anchor optimised for thermal bridges with increased installation speed (faster, shorter screw). Different cone lengths of the plug depending on the insulation thickness.

S						
Fixing length	Max insulation thickness	Washer diameter	Anchor diameter	Pack Size	NEW Product Code	Old Product Code
115mm	80mm	60mm	8mm	100	070716	070601
135mm	100mm	60mm	8mm	100	070717	070602
155mm	120mm	60mm	8mm	100	070718	070604
175mm	140mm	60mm	8mm	100	070719	070605
195mm	160mm	60mm	8mm	100	070720	070606
215mm	180mm	60mm	8mm	100	070721	070607
235mm	200mm	60mm	8mm	100	070722	070608
255mm	220mm	60mm	8mm	100	070723	070633
275mm	240mm	60mm	8mm	100	070724	070651
295mm	260mm	60mm	8mm	100	070725	070697
315mm	280mm	60mm	8mm	100	070715	



### Baumit S Tool

Special setting tool for recessing the Baumit S fixing anchor. With exchangeable circular cutters, screw bits and depth stop plate. Baumit replacement cutting blades on request.

S Installation Tool	
Pack size:	1 piece
Product code:	070738
S Adjustment Rod Spare	
Pack size:	1 piece
Product code:	070739
S Screw Bit Spare	
Pack size:	1 piece
Product code:	070740



### Rondelle STR U

Insulating caps EPS for Baumit S fixing anchor with conical flank for firm fitting into the insulating material, when fixings have been countersunk.

Rondelle STR U	
Size:	Diameter: 65mm Thickness: 15mm
Pack size:	100 pcs
Product code:	070620 (EPS 032 grey)
Product code:	070621 (Mineral cap)



### Baumit S EPS Plug

Insulating plugs for use with surface mounted fixings. For screw in fixings only.

S EPS Plug	
Pack size:	Carton quantity 500 plugs
Product code:	070737

## SYSTEM FIXINGS



### Baumit N (replaces H1 ECO & H3)

Plate impact anchor with fibre reinforced metal nail with defined plate retraction (telescopic effect). Plastic head to thermally break the fixing.

N						
Fixing length	Max insulation thickness	Washer diameter	Anchor diameter	Pack Size	NEW Product Code	Old Product Code
95mm	60mm	60mm	8mm	100	070726	070653
115mm	80mm	60mm	8mm	100	070727	070646
135mm	100mm	60mm	8mm	100	070728	070647
155mm	120mm	60mm	8mm	100	070729	070652
175mm	140mm	60mm	8mm	100	070730	070671
195mm	160mm	60mm	8mm	100	070731	070672
215mm	180mm	60mm	8mm	100	070732	070673
235mm	200mm	60mm	8mm	100	070733	070674
255mm	220mm	60mm	8mm	100	070734	070675
275mm	240mm	60mm	8mm	100	070735	070676
295mm	260mm	60mm	8mm	100	070736	070677



### Baumit H3 Hammer Fixing

Universal hammer-in anchor with plastic expansion pin, flexible washer. For concrete, solid and perforated masonry. Compliant with ETAG 004 European System Standards for EWI systems with rendering.

H3 Hammer Fixing					
Fixing length	Max insulation thickness	Washer diameter	Anchor diameter	Pack Size	Product Code
75mm	40mm	60mm	8mm	200	070634



## SYSTEM FIXINGS



### Baumit STR H

Recessed or surface-fixed screw-set anchor for use in timber substrates. For recessed applications use STR insulation caps available in Mineral wool and EPS.

#### STR H

Fixing length	Max insulation thickness	Washer diameter	Anchor diameter	Pack Size	Product Code
80mm	40mm	60mm	6mm	100	070609
100mm	60mm	60mm	6mm	100	070610
120mm	80mm	60mm	6mm	100	070611
140mm	100mm	60mm	6mm	100	070612
160mm	120mm	60mm	6mm	100	070613
180mm	140mm	60mm	6mm	100	070614
200mm	160mm	60mm	6mm	100	070615
220mm	180mm	60mm	6mm	100	070616
240mm	200mm	60mm	6mm	100	070617



### Baumit Fire Pins DMH 8 for masonry

Stainless steel, non-combustible fixing for use in EWI systems onto masonry substrates.

#### DMH 8

Fixing length	Max insulation thickness	Pack Size	Product Code
80mm	30mm	100	970698
110mm	60mm	100	970699
140mm	90mm	100	970700
170mm	120mm	100	970701
200mm	150mm	100	970702



#### DMT 80/E

Size: 80mm  
Product code: 970704



### Baumit DIPK 10/10-30

Mesh support system for scrim and pin system.

#### DIPK 10/10-30

Anchor diameter: 10mm  
Usable length: 30 - 60mm  
Washer diameter: 50mm  
Min. drill hole depth: 40mm  
Product code: 970717

## SYSTEM FIXINGS



### Baumit Nail Anchors

Pre-mounted nail anchor to mount base rails to masonry substrates. Available in 6mm or 8mm diameter.

#### ND-K 8 x 80

Size: 8 x 80mm  
Bore hole depth: less than or equal to 40mm  
Embedded depth: less than or equal to 30mm  
Pack size: Carton 100 pcs  
Product code: 140238



### Fixing for EWI onto Steel Frames

For application onto sheathing boards. Carbon steel with organic corrosion resistant finish. Use in conjunction with SBH-T Washer. Available in 60-300mm lengths. For timber frame and light gauge steel.

#### SW8R Fixing

Fixing length	Thread diameter	Pack Size	Product Code
60mm	4.8mm	500	070686
80mm	4.8mm	250	070687
90mm	4.8mm	250	070688
100mm	4.8mm	250	070689
110mm	4.8mm	250	070690
120mm	4.8mm	250	070691
130mm	4.8mm	250	070692
140mm	4.8mm	200	070693
150mm	4.8mm	200	070694
200mm	4.8mm	200	070695
220mm	4.8mm	200	070710
240mm	4.8mm	200	070711
260mm	4.8mm	200	070712
280mm	4.8mm	200	070713
300mm	4.8mm	200	070714



#### SBH-T 65/25 Washer

Size: 65mm  
Product code: 070696

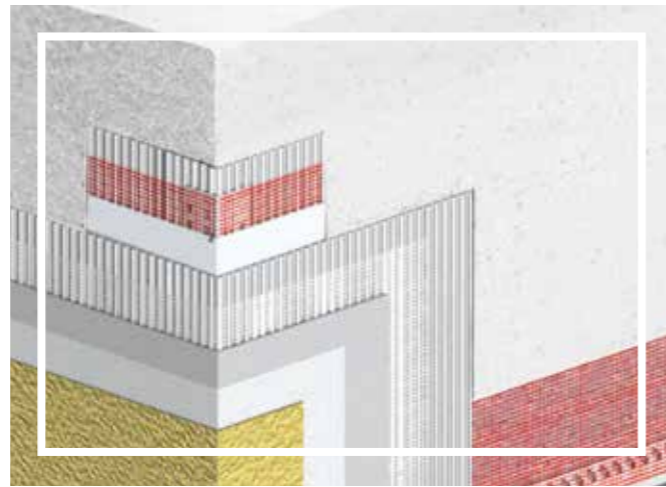
Fixing Type	Substrate Type						
	Concrete	Concrete Blocks	Bricks	Solid Masonry	Solid Stonework	Timber	Steel
Baumit S	●	●	●	●	●		
Baumit N	●	●	●	●	●		
Baumit H3 Hammer Fixing	●	●	●	●	●		
Baumit STR H						●	
Baumit Fire Pins DMH 8	●	●	●				
Baumit DIPK 10/10-30	●	●	●	●	●		



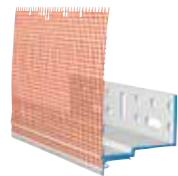
# Baumit Accessories

Ensuring Seamless Connections and Robust Protection against the Elements

EWI systems must be compatible with various materials to ensure optimal performance. Connections must be protected against stresses like driving rain and substrate tensions, while addressing factors such as thermal expansion and contraction. Proper design, high-quality insulation, and accessories are essential for long-lasting durability.



## PROFILES



### Baumit PVC Base Profile Therm

Base profile made of plastic to minimise thermal bridges, with drip edge trim, bonded glass fibre mesh and connector pin system to prevent cracking occurring at the connection joints.

#### Base Profile Therm

Width of mesh 125mm. Thermal conductivity:  $\lambda = 0.20$  W/mK (Aluminium: approx. 200 W/mK)

Insulation thickness	Packaging	Product Code
50-60mm	Length 2m, pack = 10 lengths = 20m	970805
60-70mm	Length 2m, pack = 10 lengths = 20m	970806
80-90mm	Length 2m, pack = 10 lengths = 20m	970808
100-110mm	Length 2m, pack = 10 lengths = 20m	970810
120-130mm	Length 2m, pack = 10 lengths = 20m	970812
140-150mm	Length 2m, pack = 10 lengths = 20m	970814
160-170mm	Length 2m, pack = 10 lengths = 20m	970816



### Baumit Aluminium Base Profile

Aluminium base profile in U-shape with drip and upstand.

#### Aluminium Base Profile Therm

Insulation thickness	Packaging	Product Code
20mm	Length 2.5m, pack = 10 lengths	970869
30mm	Length 2.5m, pack = 10 lengths	970873
40mm	Length 2.5m, pack = 10 lengths	970874



### Baumit 6mm PVC Profile Clip

PVC profile clip for Aluminium base profile.

#### PVC Profile Clip 6mm

Size:	Length 2.5m
Packaging:	Length 2.5m, 1 pack = 15 lengths = 37.5m
Product code:	970900



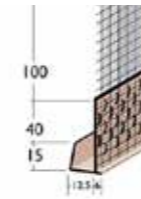
### Baumit Base Profile Therm Extension (40mm)

Plastic press on strip to extend the depth of the BaseProfile Therm for insulation thicknesses up to 200mm

#### Base Profile Therm extension 40mm

Size:	Length 2m
Packaging:	Length 2m, 1 pack = 10 lengths = 20m
Product code:	970804

## PROFILES



### Baumit Cement Board Edge Bead

PVC edge profile with an alkali-resistant 100mm glass fibre mesh for the use at the base of cement render carrier boards when rendering directly to the board.

#### Cement Board Edge Bead

Plaster thickness:	6mm
Packaging:	Length 2.5m, 1 pack = 25 pcs. = 62.5m
Product code:	971562

## JOINT PROFILES



### Baumit Return Drip Bead

Plastic drip bead with reinforcement mesh. For use only with EWI systems as a window and door head drip detail.

#### Return Drip Bead

Size:	125 x 125mm x 2.5m
Packaging:	Length 2.5m, 1 pack = 10 lengths = 25m
Product code:	971416

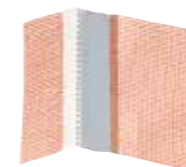


### Baumit Expansion Joint E-Profile

Expansion joint profile with alkali-resistant fibreglass reinforcement and render stop beads. For sealing and incorporating existing structural movement joints into an external wall insulation system. The E-Form profile is for joints which are in the plane of a wall. Maximum joint width of 10mm, e.g. between two components such as extensions, garages etc.

#### Expansion Joint E-Profile

Size:	125 x 125mm
Packaging:	Length 2.5m, 1 pack = 10 lengths = 25m
Product code:	971417



### Baumit Expansion Joint V-Profile

Expansion joint profile with alkali-resistant fibreglass reinforcement and render stop beads. For sealing and incorporating existing structural movement joints into an external wall insulation system. For internal corner joints. Maximum joint width of 10mm, e.g. between two components such as extensions, garages etc.

#### Expansion Joint V-Profile

Size:	125 x 125mm
Packaging:	Length 2.5m, 1 pack = 10 lengths = 25m
Product code:	971418



### Baumit Movement Joint

Plastic profile with alkali-resistant fibreglass reinforcement to form vertical movement joints. Available in 3mm or 6mm.

#### Movement Joint 3mm

Size:	125 x 125mm x 2.5m
Packaging:	Length 2.5m, 1 pack = 25 lengths = 62.5m
Product code:	971427

#### Movement Joint 6mm

Size:	125 x 125mm x 2.5m
Packaging:	Length 2.5m, 1 pack = 25 lengths = 62.5m
Product code:	971428



### Baumit Flashing Bead

PVC profile with alkali-resistant fibreglass reinforcement for attachment to sheet metal connections (e.g. lead flashing) to produce a flexible, driven rain-proof connection between the render system and sheet metal.

#### Flashing Bead

Size:	Width: 125mm, Length: 2m
Packaging:	1 pack = 25 lengths = 50m
Product code:	971422



## BAUMIT DIAGONAL ARROW MESH



### Baumit Diagonal Arrow Mesh

Alkali-resistant glass fibre mesh fabric for precise formation of a diagonal reinforcement in the corner of façade openings.

#### Diagonal Arrow Mesh

Size: 400 x 330mm  
 Packaging: 1 pack = 100 pcs.  
 Product code: 971421

## BAUMIT WINDOW PROFILES



### Baumit Window Profile Ideal

Self adhesive rigid, white PVC window seal bead with a sealing foam strip and reinforcement. Two interconnected sections to enable horizontal and vertical movement. For creating a flexible, driving rain resistant connection between external wall insulation systems and window/door frames.

#### Window Profile Ideal

Size: Width: 125mm. Length 2.4m  
 Packaging: Length 2.4m, 1 pack = 25 lengths = 60m  
 Product code: 971406



### Baumit Window Profile Flexible

Self adhesive rigid, white PVC window seal bead with compressed polyurethane sealing tape and reinforcement, for the sealing and decoupling of connection joints at window and door frames. For use in low energy and passive constructions. Specially designed peel-off strips allow easy render application. Typically used in EWI systems of a thickness greater than 100mm.

#### Window Profile Flexible

Size: Width: 125mm. Length 2.4m  
 Packaging: Length 2.4m, 1 pack = 10 lengths = 24m  
 Product code: 971407

## BAUMIT PVC STOP BEADS



### Baumit Stop Bead with Mesh

PVC stop bead with alkali-resistant fibre glass reinforcement, suitable as a render/plaster stop for finish coats. Also suitable for round arches.

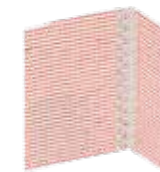
#### Stop Bead with mesh (3mm)

Size: Width: 125mm. Length: 2.5m  
 Depth: 3mm  
 Packaging: Length: 2.5m, 1 pack = 25 lengths = 62.5m  
 Product code: 971425

#### Stop Bead with mesh (6mm)

Size: Width: 125mm. Length: 2.5m  
 Depth: 6mm  
 Packaging: Length: 2.5m, 1 pack = 25 lengths = 62.5m  
 Product code: 971426

## BAUMIT CORNER BEADS



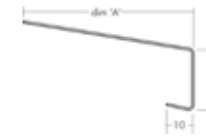
### Baumit Corner Bead

PVC corner bead with mesh for protection of 90° angles on façades.

#### Corner Bead

Size: 100 x 150mm; 1 length = 2.5m  
 Packaging: 125m = 1 pack = 50 lengths  
 Product code: 971412

## VERGE TRIMS AND OVER SILLS

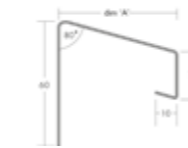


### Over Sill Trim

White coated 1.2mm aluminium suitable for most conditions requiring weather protection of external wall insulation and rendering, with peel-off low tack film to protect the section during fixing on site. Powder coating available. Available in lengths of 2.5m.

#### Over Sill Trim

Product	Depth (Dim A)	Product Code
Over Sill Trim	60mm	971531
Over Sill Trim	70mm	971532
Over Sill Trim	80mm	971533
Over Sill Trim	90mm	971534
Over Sill Trim	100mm	971535
Over Sill Trim	110mm	971536
Over Sill Trim	120mm	971537
Over Sill Trim	130mm	971538
Over Sill Trim	140mm	971539

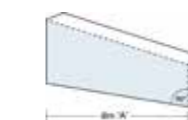


### Verge Trim

Suitable for most conditions requiring weather protection of external wall insulation and rendering. Aluminium white coated with peel-off low tack film to protect the section during fixing on site. Powder coating available. Available in lengths of 2.5m. Available in Depths (Dim A): 50mm – 300mm. Allow for 40mm overhang.

#### Verge Trim

Product	Depth (Dim A)	Product Code
Verge Trim	60mm	971453
Verge Trim	70mm	971510
Verge Trim	80mm	971456
Verge Trim	90mm	971497
Verge Trim	100mm	971480
Verge Trim	110mm	971513
Verge Trim	120mm	971516
Verge Trim	130mm	971519
Verge Trim	140mm	971471



### Universal Full End Caps

Universal full end caps for use with verge trim and over sill trim.

#### Full End Caps

Product	Depth (Dim A)	Product Code
Verge Trim	60mm	971455
Verge Trim	70mm	971512
Verge Trim	80mm	971458
Verge Trim	90mm	971499
Verge Trim	100mm	971481
Verge Trim	110mm	971515
Verge Trim	120mm	971518
Verge Trim	130mm	971521
Verge Trim	140mm	971473



## VERGE TRIMS AND OVER SILLS



### Universal Push Fit End Caps

Universal push fit end caps for use with verge trim and over sill trim.

End Caps		
Product	Depth (Dim A)	Product Code
Push Fit End Caps	50mm	971540
Push Fit End Caps	60mm	971541
Push Fit End Caps	70mm	971542
Push Fit End Caps	80mm	971543
Push Fit End Caps	90mm	971544
Push Fit End Caps	100mm	971545
Push Fit End Caps	110mm	971546
Push Fit End Caps	120mm	971547
Push Fit End Caps	130mm	971548
Push Fit End Caps	140mm	971549



### Universal Connectors

Universal connectors for use with verge trim and over sill trim.

Connectors		
Product	Depth (Dim A)	Product Code
Connector	50mm	971451
Connector	60mm	971454
Connector	70mm	971511
Connector	80mm	971457
Connector	90mm	971498
Connector	100mm	971482
Connector	110mm	971514
Connector	120mm	971517
Connector	130mm	971520
Connector	140mm	971472

## ACCESSORIES



### Baumit Spiral Anchor

For fixing light attachments into insulation (Approx. 3kg per fixing).

Spiral Anchor	
Packaging:	Bag of 10 fixings
Product code:	070632



### Baumit Joint Seal Band

Pre-compressed, self-adhesive, self-expanding joint sealing band of flexible polyurethane foam. Driving rain resistant and weather-proof. Colour: grey.

Joint Seal Band 5 - 11mm	
Size:	5 - 11mm joint width
Yield:	4.2 linear metres per roll
Packaging:	7 rolls/pack
Product code:	971405
Joint Seal Band 3 - 7mm	
Size:	3 - 7mm joint width
Yield:	5.5 linear metres per roll
Packaging:	7 rolls/pack
Product code:	971404

## ACCESSORIES



### Baumit Adjustment Packing Shims

Adjustment packing shims made from hard PVC. A range of differently sized and coloured shims to help level rails and tracks for EWI systems to achieve agreed façade tolerances.

Adjustment packing shims			
Size	Colour	Packaging	Product Code
1mm	Light Yellow	1 box = 100 pieces	070624
2mm	Light Green	1 box = 100 pieces	070625
3mm	Green	1 box = 100 pieces	070626
5mm	Yellow	1 box = 100 pieces	070627
8mm	Orange	1 box = 100 pieces	070628
10mm	Light Blue	1 box = 100 pieces	070629
15mm	Black	1 box = 100 pieces	070630
30mm	Blue	1 box = 100 pieces	070631



### Baumit Montage Set

Fastening material for base and connection profiles, consisting of: 10 base profile connectors made of hard PVC, 50 adjustment shims 3mm and 75 nail anchors with galvanized screw 8 x 75mm. Content sufficient for fastening approx. 25m of base rail.

Montage Set	
Pack:	1 set
Product code:	070637



### Baumit Filling Foam B1

Fast reacting polyurethane foam B1 for filling gaps (2 - 5mm) between installed EPS façade insulation boards.

Filling Foam B1	
Size:	750ml
Pack:	12 cans
Product code:	071401

Foam Gun	
Foam gun for applying polyurethane foam.	
Product code:	071400

Foam Gun Cleaner	
For cleaning the foam gun and tools.	
Size:	Can 500ml
Pack:	12 cans
Product code:	071403



Strong protection for the masonry

# Mineral Renders

The exterior render protects the masonry from the weather and influences. It forms the outer shell and serves as a base for the matching finish coats, façade renders or façade paints. Thermal plasters also have thermal insulation properties.

## BAUMIT WIKI

External renders are essential for protecting masonry throughout the life of a building, smoothing out surface irregularities, and ensuring a uniform appearance. For highly insulating brick walls, external render not only shields the masonry but also allows moisture to escape through its breathable layer, preventing issues like dampness and mold.

A complete external render system consists of several essential components: a primer to enhance adhesion and prepare the surface, an adhesion layer with embedded textile glass mesh for additional strength and crack resistance in certain situations, the plaster layer that forms a durable and smooth base, and a final coating or façade paint that enhances aesthetics and offers extra protection against environmental elements.

Using a well-coordinated system ensures that each layer supports and enhances the performance of the others, leading to improved durability, better adhesion, and long-lasting protection. Baumit offers expertly matched plaster systems for every application, guaranteeing optimal results and reliable performance for your building's exterior.



What to learn more?  
Visit our Website!



### Lightweight Render System



Optimal elasticity – The optimised elasticity of Baumit MP 69 provides ideal absorption of stresses from the substrate. The system is suitable for any mineral-based substrate, especially highly insulating wall materials. In the right combination, also perfect for modern high-performance bricks.



### Classic Render System



For any surface – This breathable render system is easy and economical to use on all non-insulating wall materials. The system also provides the ideal substrate for all Baumit top coats and paints.



### Thermal Render System



For extra thermal insulation – A render system adapted to the substrate, combining the properties of a render with those of thermal insulation. At the heart of the system is Baumit DP 85, which is easy to apply by both hand and machine.



## BAUMIT MONOPLUS

# Through coloured one coat scratch render

Baumit MonoPlus offers a low maintenance, weather resistant and highly durable render system for new build and renovation projects.

- ALGAE RESISTANT**  
Unique formulation designed to reduce the effects of algae and minimise the need for as regular cleaning and maintenance.
- HAND & MACHINE APPLICATION**  
Formulated to be spray applied for faster application, but equally able to be applied by hand.
- SUBSTRATE SUITABILITY**  
Application can be made to a range of substrates including brick, standard block and medium density block.
- COLOUR VARIANTS**  
Following market research into colour trends and demand, MonoPlus is available in a choice of 6 different colour options.
- PRODUCT WARRANTY**  
Issue a Baumit product and installation warranty for up to 10 years ensuring peace of mind for the homeowner.
- CONSISTENT FINISH**  
Uniform 1.2 mm fine grain size is lighter in weight to scratch back, so reducing waste.
- MULTIPLE FINISH OPTIONS**  
Creativity is provided with the opportunity to finish Baumit MonoPlus in a variety of finish options; Monocouche, Dry Dash, Wet Dash and Rough Cast.



### Baumit MonoPlus

Baumit MonoPlus is a specifically formulated through coloured, one coat scratch render. Following extensive research, development and testing, Baumit MonoPlus offers a low maintenance, weather resistant and highly durable render system for new build and renovation projects.

Benefiting from multiple finish options including a typical Monocouche style, where the product is applied in 2 passes and scratched back to a typical 15mm depth. Consisting of the finest base materials, Baumit MonoPlus is equally at home being used for large scale commercial jobs as it is for smaller single elevation projects.

MonoPlus	25 kg	
Consumption:	approx. 25.0 kg/m <sup>2</sup>	
Packaging:	25 kg, 1 pallet = 42 bags = 1.050 kg	
Minimum thickness	15mm (after scratching)	
Time before scratching	3 - 24 hrs	
Product code:	White	050001
Product code:	Ivory	050002
Product code:	Cream	050003
Product code:	Sand	050004
Product code:	Light grey	050005
Product code:	Mid grey	050006



## BAUMIT MONOPLUS COLOUR RANGE



## SURFACE PREPARATION



### Baumit VS 60

Cement spray mortar for the preparation of substrates. Helps to regulate suction for mineralic substrates with strong or uneven suction and increase adhesion properties. Manual and machine application.

VS 60	35kg
Grain size:	0 - 4 mm
Consumption:	approx. 5 - 6kg/m <sup>2</sup> 50-60% coverage approx. 10 - 11 kg/m <sup>2</sup> full coverage
Yield:	approx. 3.2 - 7.0m <sup>2</sup> /bag
Packaging:	35kg, pallet = 36 bags = 1260kg
Product code:	200101

## RENDER



### Baumit MP 69

Lightweight lime-cement render complying with EN 998-1, with lightweight mineral aggregates. Suitable for all external and internal areas including bathrooms. Manual and machine application.

MP 69	30 kg
Grain size:	0 - 1.2 mm
Consumption:	approx. 1.0kg/m <sup>2</sup> /mm
Yield:	approx. 2.0m <sup>2</sup> /bag/15mm coat thickness
Packaging:	30kg, pallet = 35 bags = 1050kg
Product code:	091130



### Baumit KZP 65

General purpose lime-cement render for manual and machine application, complying with EN 998-1. Suitable for use on most types of masonry. Part of the UniRend System.

KZP 65	25 kg
Grain size:	0 - 1.2 mm
Consumption:	approx. 1.4kg/m <sup>2</sup> /mm thickness
Yield:	1.2m <sup>2</sup> /bag/15mm thickness
Packaging:	25kg, pallet = 42 bags = 1050kg
Product code:	091161



### Baumit DP 85

Factory prepared dry powder, thermally insulating render basecoat with EPS beads. For use on the façade on all types of brick/blockwork. Manual and machine application.

DP 85	9 kg
Grain size:	0 - 2 mm
Consumption:	approx. 2.25 kg/m <sup>2</sup> /per 10mm
Yield:	1 m <sup>2</sup> /bag/40mm coat thickness
Packaging:	9kg, pallet=40 bags=360kg
Product code:	080209



### Baumit LS 62

Pure mineral cement lightweight render for outside and inside as well as damp rooms, especially for the plinth and wet areas with highly insulating masonry, suitable as a base and top coat. For all base-type substrates and as light plaster with increased strength indoors. Manual and machine application.

LS 62	35 kg
Grain size:	0 - 1.2 mm
Consumption:	approx. 1.2kg/m <sup>2</sup> /mm thickness
Yield:	1.9m <sup>2</sup> /bag/15mm thickness
Packaging:	35kg, pallet = 35 bags = 1225kg
Product code:	091900

## RENDER BEADS



### Baumit PVC Stop Bead

PVC Render Stop Bead				
Size	Render Depth	Colour	Packaging	Product code
10 mm	10-12 mm	White	Length 2.5m, pack qty = 25.	971489
15 mm	15-17 mm	White	Length 2.5m, pack qty = 25.	971559
15 mm	15-17 mm	Ivory	Length 2.5m, pack qty = 25.	971569
15 mm	15-17 mm	Light Grey	Length 2.5m, pack qty = 25.	971570
15 mm	15-17 mm	Dark Grey	Length 2.5m, pack qty = 25.	971571



### Baumit PVC Corner Bead

PVC Render Corner Bead				
Size	Render Depth	Colour	Packaging	Product code
10 mm	10-12 mm	White	Length 2.5m, pack qty = 25.	971488
15 mm	15-17 mm	White	Length 2.5m, pack qty = 25.	971558
15 mm	15-17 mm	Ivory	Length 2.5m, pack qty = 25.	971566
15 mm	15-17 mm	Light Grey	Length 2.5m, pack qty = 25.	971567
15 mm	15-17 mm	Dark Grey	Length 2.5m, pack qty = 25.	971568



### Baumit PVC Bellcast Bead

PVC Render Bellcast Bead				
Size	Render Depth	Colour	Packaging	Product code
10 mm	6-12 mm	White	Length 2.5m, pack qty = 25.	971490
15 mm	10-17 mm	White	Length 2.5m, pack qty = 25.	971560
15 mm		Ivory	Length 2.5m, pack qty = 25.	971572
15 mm		Light Grey	Length 2.5m, pack qty = 25.	971573
15 mm		Dark Grey	Length 2.5m, pack qty = 25.	971574



### Baumit PVC Movement Bead

PVC Render Movement Bead				
Size	Render Depth	Colour	Packaging	Product code
10 mm	10-12 mm	White	Length 2.5m, pack qty = 25.	971491
15 mm	15-17 mm	White	Length 2.5m, pack qty = 25.	971561
15 mm	15-17 mm	Ivory	Length 2.5m, pack qty = 25.	971575
15 mm	15-17 mm	Light Grey	Length 2.5m, pack qty = 25.	971576
15 mm	15-17 mm	Dark Grey	Length 2.5m, pack qty = 25.	971577



### Baumit PVC Window Profile Ideal Bead

PVC Window Profile Ideal Bead				
Size	Render Depth	Colour	Packaging	Product code
13 mm	13 mm	White	Length 2.6m, pack qty = 40.	971408





Preservation of old substrates

# Baumit Renovation

**Baumit Sanova stands for systems for the renovation of damp and salt-contaminated masonry.**

Baumit restoration renders are especially developed for moist and salt stressed masonry and are ideal for interior and exterior use. The high porosity and the reduced capillary water absorbency ensure a dry and functional render surface. With Baumit Restoration Systems, renovated masonries and walls will remain attractive and beautiful and give the render surfaces much longer durability.



## MULTIPURPOSE RENDER



### Baumit MultiContact MC 55 W

Natural-white, fibre-reinforced multi-purpose bonding mortar. Suitable as a remediating render over existing stable, mineral and synthetic resin-based plasters, renders and paintwork. Also suitable as a basecoat on concrete and insulating boards or as a finish render on concrete formwork and fair faced masonry.

MultiContact MC 55 W	25 kg
Grain size:	1.2mm
Consumption:	as adhesive: approx. 4.0 – 5.0kg/m <sup>2</sup> as basecoat: approx. 5.0 – 5.5kg/m <sup>2</sup>
Yield:	as adhesive: Approx. 5.0 – 6.25m <sup>2</sup> /bag as basecoat: approx. 4.5 – 5.0kg/m <sup>2</sup> /bag
Packaging:	25kg bag, 1 pallet = 42 bags = 1050kg
Product code:	100125



### Baumit MultiFine RK 70 N | Klima RK 70 N

Natural white lime render with highly hydraulic additives for better processing and adhesion. Suitable for internal and external use.

MultiFine RK 70 N	25 kg
Grain size:	0 - 0.6mm
Consumption:	approx. 2.8kg/m <sup>2</sup> /2mm approx. 8.9m <sup>2</sup> /bag/2mm
Yield:	approx. 8.9m <sup>2</sup> /bag/2mm
Packaging:	25kg bag, 1 pallet = 42 bags = 1050kg
Product code:	120780

## SPECIALIST RENOVATION RENDERS



### Baumit Sanova SP Grey | Sanova SP 64 P

Grey, hydrophobic renovation render with active production of breathable pores. For renovation of damp and high salt containing block/brickwork. For internal and external use. Suitable for machine application.

Sanova SP Grey	35 kg
Grain size:	0 - 1.2mm
Consumption:	approx. 1.1kg/m <sup>2</sup> /mm
Yield:	approx. 2.1m <sup>2</sup> /bag/15mm
Packaging:	35kg, 1 pallet = 36 bags = 1260kg
Product code:	110413

## SUBSTRATE PREPARATION



### Baumit SanovaPre | Sanova SV 61

Adhesion promoter for damp and salt containing block/brickwork. High resistance to sulphates. For internal and external use.

SanovaPre	35 kg
Grain size:	4.0mm
Consumption:	approx. 5 - 6kg/m <sup>2</sup> /50 - 60% coverage
Yield:	approx. 5.8 - 7.0m <sup>2</sup> /bag/50 - 60% coverage
Packaging:	35kg, 1 pallet = 36 bags = 1260kg
Product code:	111035



Historical restoration and renovation

# Baumit Restoration

Anyone who wants to preserve historically valuable buildings true to their original condition should use products made from lime or natural hydraulic lime (NHL).

Historical and listed buildings in particular deserve special treatment with systems tailored to their needs. Baumit NHL products are the ideal solution for restoring old plaster to its original state, simply and permanently.



**LIFE CHALLENGE LJUBLJANA**  
 Shortlisted in the Historical Renovation category of the 2024 Baumit Life Challenge. The Prinz-Heinrich-Palais, now the main building of Humboldt-Universität Berlin, was built in 1748 and has historical monument status. Requiring considerable maintenance, the update utilised a number of Baumit specialist products.

## RESTORATION



### Baumit NHL Thermo

Cement-free, heat-insulating lightweight plaster mortar on NHL basis, as a highly diffusion-open plaster. Especially for the renovation of historical buildings and the protection of historical monuments. For manual and machine application for exterior and interior use, not for plinth areas. Grain size 1.5 mm.

- Heat-insulating ▪ Especially for the renovation of historical buildings and monument protection
- Can be processed manually and mechanically

<b>NHL Thermo</b>	<b>40 l</b>
Thermal conductivity:	$\lambda = 0.0816 \text{ W/mK}$
Consumption:	approx. 1 litre/m <sup>2</sup> /mm
Yield:	approx. 2 m <sup>2</sup> /bag /20mm
Packaging:	40 l, 1 pallet = 40 bag = 1.600 l
Product code:	120871

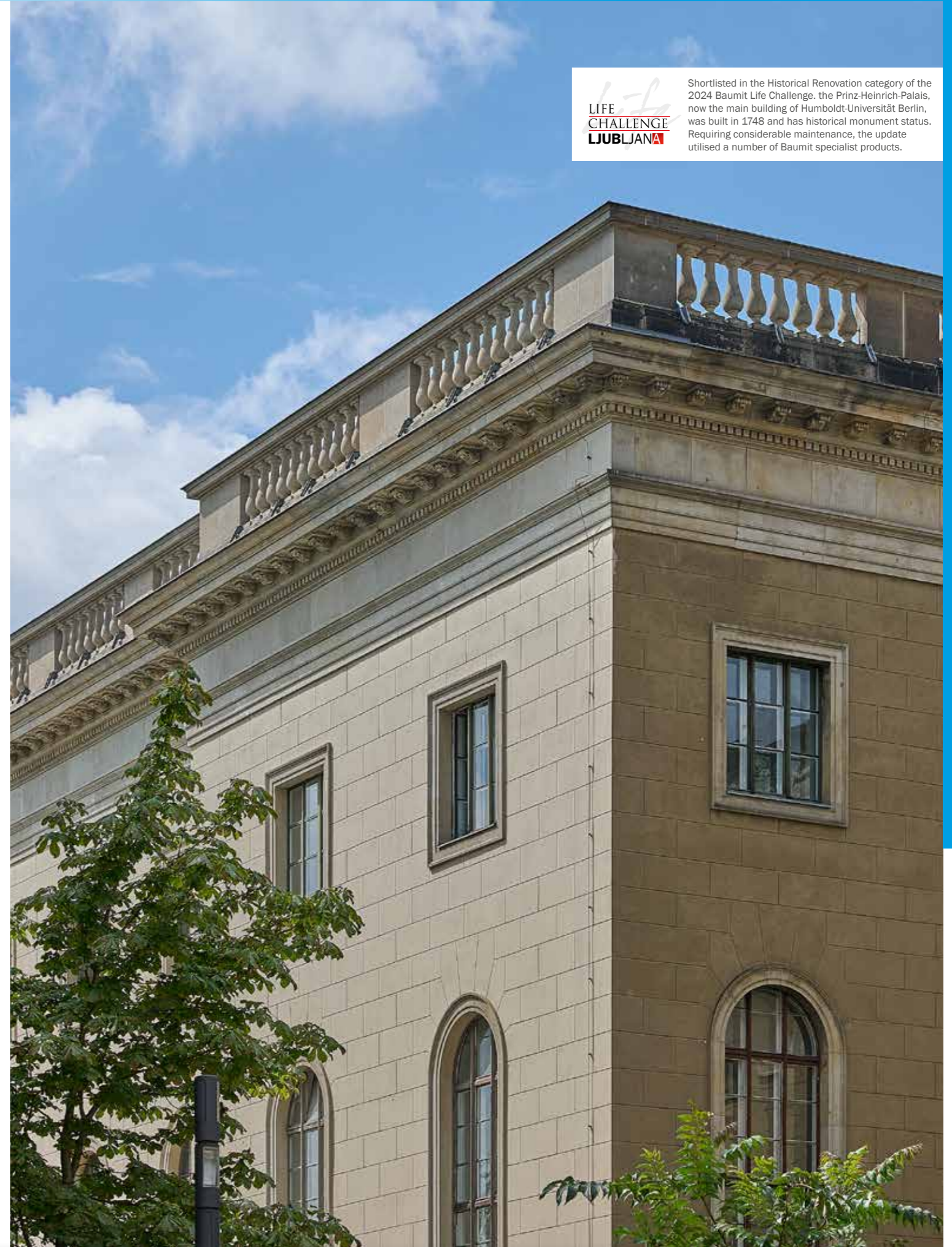


### Baumit NHL 3.5

Natural, hydraulic lime as a binder without additives, for plasters and mortars, especially for the renovation of listed and historic buildings. Strength class 3.5 according to ÖNORM EN 459-1. For site mixing with sands and water.

- Cement-free binder ▪ For plasters and mortar ▪ Especially for protection of historic buildings

<b>NHL 3.5</b>	<b>25 kg</b>
Consumption:	approx. 200 kg/m <sup>3</sup>
Packaging:	25 kg bag, 1 pallet = 50 bag = 1.250 kg
Product code:	120872



Cosy and healthy indoor climate.

# Interior Coatings

**Interior paints and fillers have the task of giving the interior its final characteristics and make a decisive contribution to well-being and a healthy indoor climate.**

The quality of indoor air is assessed based on three main factors: physical, biological, and chemical. Physically, it involves maintaining consistent humidity levels and temperature. Biologically, it prevents issues like mould growth, viruses, and bacteria. Chemically, it focuses on avoiding volatile organic compounds (VOCs), plasticisers, and artificial fragrances that can affect air quality.



## AIRLESS PLASTER



### Baumit SX Airless

White, ready-to-use dispersion-based sprayable plaster. High filling performance for large-scale, mechanical application, e.g. with airless spray machines.

- Suitable for interior walls and ceilings • Ideal for a smooth finish • Free from solvents

SX Airless	25 kg
Consumption:	dependant on surface flatness and substrate approx 1.7kg/m <sup>2</sup> /mm for first coat approx 1.6 - 2.3kg/m <sup>2</sup> /mm for second coat
Yield:	approx. 15m <sup>2</sup> /bag/1mm
Packaging:	25kg, 1 pallet = 40 bags = 1000kg
Product code:	141030

#### Features

- SX Airless is ready to use; no mixing required on site and no risk of overmixing affecting finished product performance for interior walls and ceilings.
- Supplied in a consistent, mixed finish generating zero airborne dust. Machine applicable; speed of application is far quicker than hand applied traditional plasters.
- Low mess application means minimal wastage.
- Natural white colour negates the need for a mist coat prior to painting, requiring no water within the entire application process.
- Can be applied at a maximum 4mm thickness in a single pass.. quicker application time compared to traditional plasters.
- Quick drying, can be sanded and finished in under 48 hours compared to a minimum 4-5 days drying for traditional plaster finish.



## WET PLASTER



### Baumit FinishSuperior

Ready-to-use pasty putty for creating extra smooth surfaces. Excellent sanding properties. For indoor use only. Suitable for manual or machine application. Thickness 0-2 mm. Especially for Q3 - Q4.

- For very smooth surfaces • Easy to sand • For manual and machine application

FinishSuperior	25 kg
Consumption:	approx. 1,7 kg/m <sup>2</sup> /mm
Yield:	approx. 15m <sup>2</sup> /bag at 1mm thickness
Packaging:	25 kg bag, 1 pallet (40bags) = 1000 kg
Product code:	140242



FinishSuperior	20 kg
Consumption:	approx. 1,7 kg/m <sup>2</sup> /mm
Yield:	approx. 12m <sup>2</sup> /bucket at 1mm thickness
Packaging:	Bucket 20kg bucket, 1 pallet (32 buckets) = 640kg
Product code:	140243



### Baumit FinishMax

Ready-to-use pasty putty for filling joints and pores of mineralic substrates to create an even surface. Suitable for higher thicknesses. For indoor use only. Thickness 1-6 mm. Especially for Q2-Q3. Ideal for hand application

- Excellent joint filling properties • Up to 5mm thickness • For manual or machine application

Klima Glätt W	20 kg
Consumption:	approx. 1.6 kg/m <sup>2</sup> /mm
Yield:	approx. 12.5m <sup>2</sup> /bucket at 1mm thickness
Packaging:	20 kg bucket, 1 pallet = 32 buckets = 640 kg
Product code:	140244



## INTERIOR WET PLASTER



### Baumit KlimaDekor

Ready-to-use top coat plaster. Natural white, lime-based, ecological thin coat plaster for internal use. Can be tinted to Life codes ending 8-9.

- Vapour permeable ▪ Ready mixed ▪ Low emissions

KlimaDekor	25 kg
Grain Size:	0.2 - 1.7mm
Texture:	Stippled
Consumption:	approx. 2.7 - 2.9kg/m <sup>2</sup>
Yield:	approx. 9.0kg/m <sup>2</sup> /bucket
Packaging:	25kg bucket, 1 pallet = 32 buckets = 800kg
Product code:	130101



### Baumit KlimaFinish

Ready to use, natural white lime skimming plaster for internal use. Use to achieve a high-quality, smooth finish on lime and cement-based plaster, concrete, aerated concrete and plasterboard. Highly vapour permeable to improve indoor climate. Ideal for hand or machine application.

- Ready mixed ▪ High-quality smooth surface ▪ Pollutant-free & mildew-inhibiting

KlimaFinish	25 kg
Grain Size:	0 - 0.2mm
Consumption:	approx. 1.5kg/m <sup>2</sup> /mm with 2mm thickness
Yield:	approx. 13m <sup>2</sup> /bag for 2mm thickness
Packaging:	20kg bucket, 1 pallet = 32 buckets = 640kg
Product code:	130101



## FINE PLASTER



### Baumit Klima Glätt W | KlimaFino

Natural white, powdered lime plaster for internal use. Use to achieve a high-quality smooth surface on existing lime / cement-based plaster concrete, aerated concrete and plasterboard. Ideal for hand or machine application.

- Improves indoor climate and highly permeable ▪ For a high quality, smooth finish ▪ Pollutant free & mould / mildew resistant

Klima Glätt W	20 kg
Grain Size:	only limestone powder
Consumption:	approx. 1kg/m <sup>2</sup> /mm
Yield:	approx. 20m <sup>2</sup> /bag/1mm
Packaging:	20kg, pallet = 48 bags = 960kg
Product code:	127020



## LIME PLASTER



### Baumit MultiFine RK 70 N | Klima RK 70 N

Natural white lime render with highly hydraulic additives for better processing and adhesion. Suitable for internal and external use.

MultiFine RK 70 N	25 kg
Grain Size:	0 - 0.6mm
Consumption:	approx. 2.8kg/m <sup>2</sup> /2mm
Yield:	approx. 8.9m <sup>2</sup> /bag/2mm
Packaging:	25kg, 1 pallet = 42 bags = 1050kg
Product code:	120870



### Baumit Klima RK 38

Cement-free, natural-white lime render for internal areas. Suitable as a basecoat and finish coat for fine textures.

Klima RK 38	35 kg
Grain Size:	0 - 0.8mm
Consumption:	approx. 1.3kg/m <sup>2</sup> /mm
Yield:	approx. 2.7m <sup>2</sup> /bag/10mm
Packaging:	35kg, pallet = 36 bags = 1260kg
Product code:	121238



### Baumit Klima RK 39

Cement-free, natural-white lime render for external and internal areas. Suitable as a basecoat and finish coat, specially for higher thicknesses.

Klima RK 39	35 kg
Grain Size:	0 - 3.0mm
Consumption:	approx. 1.3kg/m <sup>2</sup> /mm
Yield:	approx. 1.7m <sup>2</sup> /bag/15mm
Packaging:	35kg, pallet = 36 bags = 1260kg
Product code:	121039



## LIME PLASTERS



### Baumit Klima KP 36 W | KlimaWhite

A lightweight, vapour-permeable, white lime internal plaster that regulates indoor humidity. Suitable for use even in wet rooms. The natural micro-porous structure ensures rapid absorption and release of water vapour for an excellent indoor climate. Ideal for machine application.

<b>Klima KP 36 W</b>	<b>35 kg</b>
Grain Size:	0 - 1.0mm
Consumption:	approx. 1.3kg/m <sup>2</sup> /mm
Yield:	approx. 2.7m <sup>2</sup> /bag/10mm
Packaging:	35kg, pallet = 36 bags = 1260kg
Product code:	121636



## INTERIOR PAINT



### Baumit KlimaColor

Ready-to-use, silicate interior paint with high covering power and whiteness. Can be airless sprayed. No preservatives, solvents, amine-free and ammoniac-free. Very low in emissions and not harmful to the environment. Can be tinted to Baumit Life colours ending in 7-9.

- Preservative and solvent-free • Highly vapour permeable • Suitable for conservation projects

<b>KlimaColor</b>	<b>14L</b>
Consumption:	approx. 0.25L/m <sup>2</sup> (per coat)
Yield:	approx. 56m <sup>2</sup> /bucket
Packaging:	14L, 1 pallet = 32 buckets = 448L
Product code:	130224



Life

## PRIMER



### Baumit EasyPrimer

Use on plastered surfaces before applying Baumit KlimaColor to seal the surface. Low odour, emission and solvent free (E.L.F.)

- Primer for Klima Color • For absorbent and chalky surfaces

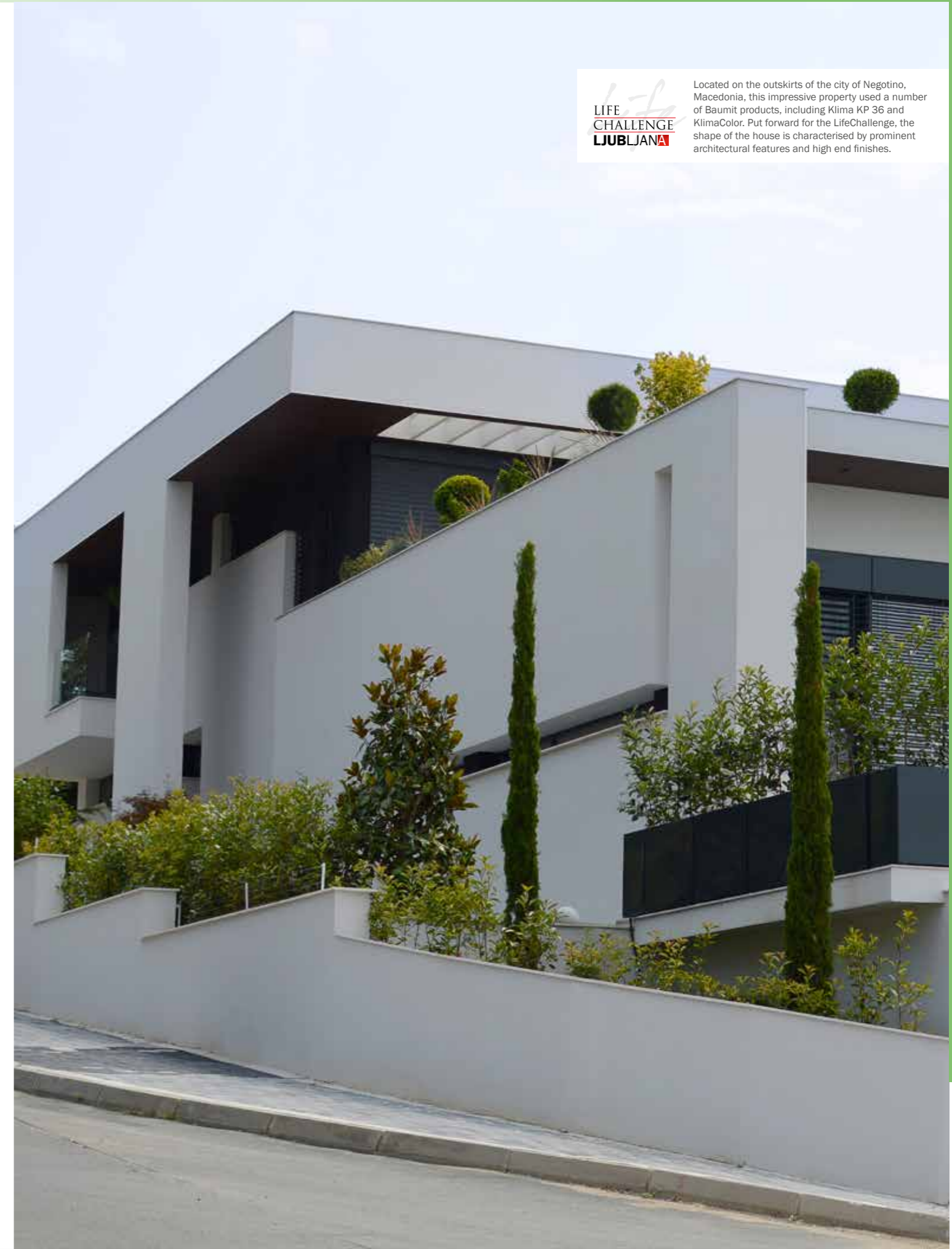
<b>EasyPrimer</b>	<b>10L</b>
Consumption:	approx. 0.10L /m <sup>2</sup> /mm
Yield:	approx. 100m <sup>2</sup> /10L bucket
Packaging:	10L, 1 pallet = 60 buckets = 600L
Product code:	122610



### Baumit SperrGrund

Primer for plasterboard, old interior plasters, wood fibre boards and carrier boards. Provides a good barrier effect to prevent existing stains (e.g. water or nicotine stains) bleeding through the plaster. Odourless, solvent free, pigmented white.

<b>SperrGrund</b>	<b>14L</b>
Consumption:	approx. 0.4L/m <sup>2</sup> (for 2 coats)
Yield:	approx. 33m <sup>2</sup> /bucket
Packaging:	14L, 1 pallet = 32 buckets = 448L
Product code:	111512



Located on the outskirts of the city of Negotino, Macedonia, this impressive property used a number of Baumit products, including Klima KP 36 and KlimaColor. Put forward for the LifeChallenge, the shape of the house is characterised by prominent architectural features and high end finishes.





# Service

## BAUMIT CUSTOMER SERVICE

Baumit offers a comprehensive customer service package in all areas of rendering, insulation and façade renovation. We support you with expert advice from our experienced specialists to help you select the right products, and provide training and guidance on application best practice.

Our range of services includes:

- Making recommendations for insulation, render and façade renovation
- Technical support, including product data sheets and health and safety method statement guidelines
- Application guidelines and practical installation training for external wall insulation and render systems
- A range of colour fans to aid colour selection
- Original colour samples
- CPD's and seminars for architects
- Calculating the U-Values of external walls and condensation risk analysis
- Online services, including sample requests and colour designing software

## SAMPLES

Find the perfect colour for your project by requesting a sample from Baumit. You can order samples directly from the website at [www.baumit.co.uk/sample](http://www.baumit.co.uk/sample) or email [samples@baumit.co.uk](mailto:samples@baumit.co.uk) with your request.



**Sample bucket**  
1kg



**Sample board**  
148 x 105mm finished board

## BAUMIT TRAINING ACADEMY

Baumit has over 35 years' experience in creating our range of innovative, tested EWI and render products, designed to create beautiful, healthy homes for people to live in. We are therefore keen to give tradespeople the opportunity to use our products to create better spaces for their clients. But most importantly, we want to ensure our customers have the utmost confidence when it comes to application of EWI systems.

- Become Baumit approved
- Learn EWI installation best practice
- Issue 10 year system warranties
- Ongoing expert advice & support
- City & Guilds Assured certification
- Locations in Kent, Yorkshire, Scotland and Isle of Man
- Training Trailer able to bring training to you
- Credit voucher issued upon successful completion of the course

Advanced EWI Course - 1 day - £200

Designed to educate participants on the broad range of EWI installations and practices via both theoretical and practical experience.

Find out more:

**w. [baumit.co.uk/academy](http://baumit.co.uk/academy)**

**e: [training@baumit.co.uk](mailto:training@baumit.co.uk)**



## BAUMIT ONLINE SERVICES

The Baumit website provides comprehensive information on Baumit products, external wall insulation and render systems and accessories together with details on how to renovate a properties façade.

- Technical information including application guidelines, product data sheets and EWI system renders
- Downloadable product brochures
- Request a colour sample
- Find out more about our training academies
- Design a façade and try out different colour options
- Find inspiration from past Baumit projects



## BAUMIT WARRANTY PORTAL

In addition to the standard product guarantee, Baumit offer a 10 year warranty on EWI systems, render only projects and properties using MonoPlus. Refer to the Warranty Terms and Conditions for full details.

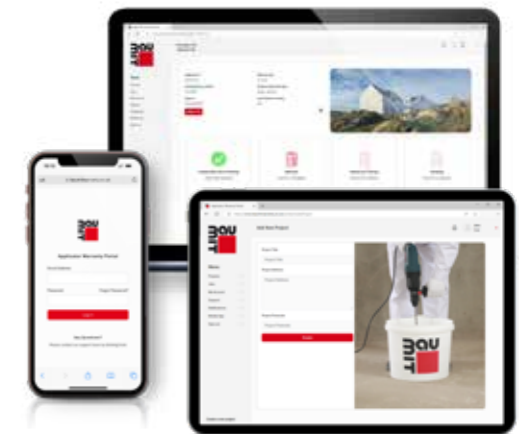
Using the Baumit Applicator Warranty Portal, approved applicators are able to supply photographic evidence at each stage of the project, which is then submitted for sign off.

Warranties can only be issued by Baumit approved applicators, who have completed the Approved EWI Applicator course. On this course, they learn best practice when using Baumit products in a theoretical and practical environment. The course also carries the endorsement of City & Guilds Assured.

Find out more:

**w. [baumit.co.uk/warranty](http://baumit.co.uk/warranty)**

**e: [warranty@baumit.co.uk](mailto:warranty@baumit.co.uk)**





# Service

## COMPANY NOTES

Our General Terms and Conditions of Sale and Delivery shall apply exclusively.

<b>Material consumption information</b>	All material consumption figures are for guidance only. The actual rate depends on the type and nature of the substrate and the application technique.
<b>Application procedures</b>	Application procedures shall be in accordance with the applicable regulations and the respective Baumit product data sheets, which can be found on our website.
<b>ISO Certified</b>	Baumit Beteiligungen GmbH is ISO 9001 certified. Baumit UK Ltd is ISO 9001, 14001 & 45001 certified.
<b>CE Marking</b>	As a matter of course, Baumit products meet all necessary national and EU-wide requirements, including CE marking. <div style="display: flex; justify-content: space-around; align-items: center;"> </div>
<b>Material returns and restocking fees</b>	All goods ordered and correctly delivered will be charged and are only returnable by agreement. Products may be returned if they are unopened, in a suitable condition and returned within 8 weeks from delivery date. <b>Tinted product and non-stock items are non-returnable under any circumstances.</b> 20% restocking fee will apply.
<b>Pallets</b>	Pallets, pallet wrapping/foils and airbags will be supplied as required and will be charged at the rates agreed.
<b>Colour Shades</b>	Baumit Life is the basis of all coloured façade renders and paints. Detailed information is shown on the respective product pages. Other colours are available on request. The colour fan is not a 100% representation of what will be applied to the wall, samples can be provided on request. The appearance of colours can be effected by grain size, texture, application technique and size of area of application. No liability is accepted for such variations. We recommend a physical colour sample be requested before ordering coloured product. No liability is accepted for colour variations and the customer should satisfy themselves that the colour is in line with their expectations before placing the order. The sands used in the Baumit facade renders are natural products. On occasion some of the sand grains may appear slightly darker. This does not in any way constitute a problem with quality of the product, but may represent a faint optical detractor, due to the natural properties of the raw materials.

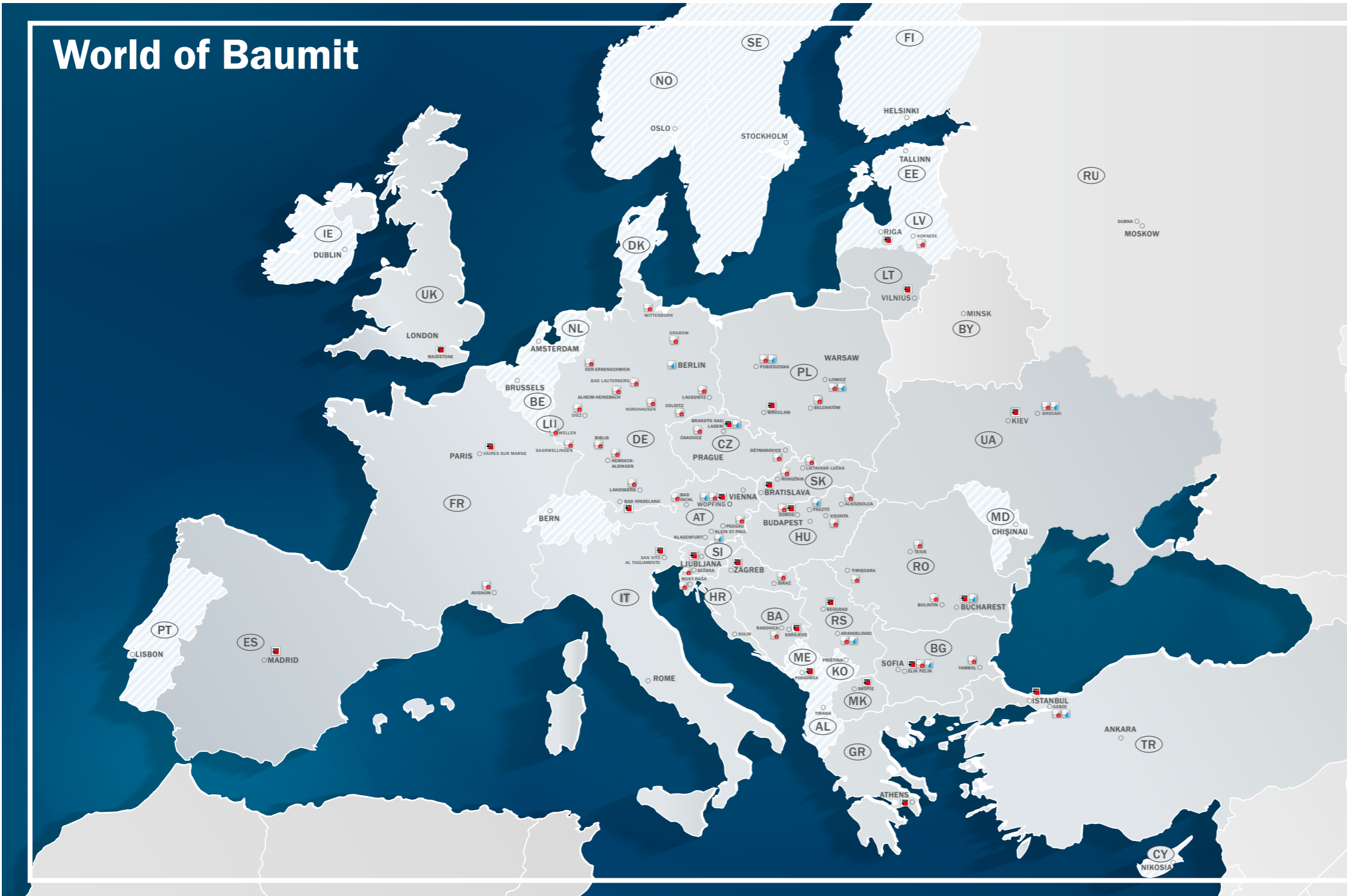
## COMPANY NOTES

<b>Ex-Stock colours</b>	White (0019) – NB. Due to the use of natural ingredients, there may be slight colour variations.
<b>Pre-order colours</b>	All colours except white (0019).
<b>Cancellation fees</b>	For cancellation of orders, and when the ordered goods are not picked up within 21 days, a cancellation fee will be charged.
<b>Lead times</b>	Goods for collection can be collected no sooner than 2 hours after the order confirmation is received. Orders made after 12pm will be despatched the following working day.
<b>Re-ordering</b>	When re-ordering, note that slight colour variations are possible. Colour uniformity is assured only within a single batch.
<b>Material consumption</b>	The consumption values indicated in this Catalogue are intended for guidance only. An allowance for over-usage of about 10 % may be taken for estimating purposes. The consumption data is dependent on the roughness and porosity of the substrate and the application technique employed.
<b>Colour surcharges</b>	Baumit Life colour system: No surcharge Other colours: Surcharges fees on request
<b>Mould and algae</b>	Baumit SilikonTop, SilikatTop, GranoporTop, PuraTop and CreativTop are formulated with basic biocide additives to protect against algae and fungal attack. Thus mould and algae repellency is achieved.  For projects with critical environmental conditions (such as above-average exposure to moisture, rainfall, proximity to water, natural habitats, forest locations, in a house near shrubs and trees and vegetation, etc.) and for the renovation of algae and/or fungus-infested façades we recommend additional rates.  Surcharge fees for additional biocide are available on request. When ordering please specify with addition algae & fungus protection. Please note that a permanent protection against algae and/or fungus can not be guaranteed. Will be one pallet per product, with the exception of bucket products.
<b>Minimum order quantities</b>	As laid out in the customer price list.
<b>Colour samples</b>	Please refer to the samples details in the Overview section.
<b>Minimum thickness for EWI</b>	Please consult applicable national approval certificates for details of the minimum permitted thickness of decorative finishes for use in external wall insulation systems. Unless otherwise specified, the minimum thickness is 1.5mm (scraped texture). If the maximum aggregate size of the finish coat is less than 1.5mm then a multilayer application is required to achieve the required minimum thickness.
<b>Deliveries</b>	Delivery contact details must be provided at the point of order. Deliveries are made via the pallet network and third party couriers and transit times are not guaranteed. Some goods from the same order may be delivered by different delivery methods. It is the customers responsibility to inspect the goods at the time of receipt and report any issues within one working day. Failed deliveries are chargeable and will incur a redelivery charge.
<b>Baumit Warranty Portal</b>	All customers who complete the Baumit Approved training course run via the Academy will gain access to the Baumit Warranty app. Our app provides you with a warranty checklist which allows you to automatically produce your own warranties simply and easily. Contact us for more information: training@baumit.co.uk





# World of Baumit



## BAUMIT KEY



**Baumit Headquarters**



**Baumit Wet Production**



**Baumit Dry Mortar Production**



**Baumit Export**

**MK - NORTH MACEDONIA**  
**Baumit Makedonija Doel**  
 MK - 1000 Skopje  
 Ul. Jadranska Magistrala 165  
 Tel.: +389 2 306 98 07  
 info@mk.baumit.com  
 www.baumit.com.mk

**SK - SLOVAKIA**  
**Baumit, spol. s r. o.**  
 SK - 811 02 Bratislava  
 Žižkova 9  
 Tel.: +421 2 593 03 311  
 office@baumit.sk  
 www.baumit.sk

**PL - POLAND**  
**Baumit sp. z o.o.**  
 PL - 53-012 Wrocław  
 ul. Wyścigowa 56 G  
 Tel.: +48 71 358 25 00  
 info@baumit.pl  
 www.baumit.pl

**TR - TURKEY**  
**Baumit TR**  
 Baumit İnşaat Malzemeleri San. Tic.Ltd.Şti  
 Esensehir Mahallesi Hale Sokak No. 10 B Blok  
 TR - 34776 Ümraniye/İstanbul  
 Tel.: +90 (0) 216/680 34 00  
 info@baumit.com.tr  
 www.baumit.com.tr

**RO - ROMANIA**  
**Baumit Romania Com SRL**  
 RO - 061129 Bucuresti  
 B-dul Iuliu Maniu nr. 600A, sector 6  
 Tel.: +40 21 350 01 06  
 office@baumit.ro  
 www.baumit.ro

**UA - UKRAINE**  
**TOV Baumit Ukraine**  
 UA - 03083 Kyiv  
 vul. Pyrohivskyy Shlyah 34  
 Tel.: +380 44 568 52 54  
 office@baumit.ua  
 www.baumit.ua

**RS - SERBIA**  
**Baumit Serbia d.o.o.**  
 SRB - 11130 Beograd  
 Smederevski put 25k  
 Tel.: +381 11 347 50 82  
 office@baumit.rs  
 www.baumit.rs  
**In charge of: AL, KO**

**UK - UNITED KINGDOM**  
**Baumit Ltd.**  
 Unit 2 Westmead  
 New Hythe Lane, Aylesford  
 Maidstone, Kent, ME20 6XJ - UK  
 Tel.: +44 (0) 1622 710 763  
 contact@baumit.co.uk

**AT - AUSTRIA**  
**Baumit GmbH**  
 Wopfing 156  
 A - 2754 Waldegg  
 Tel.: +43 (0) 0501 888-0  
 office@wopfing.baumit.com  
 www.baumit.at

**BA - BOSNIA HERZEGOVINA**  
**Baumit d.o.o.**  
 BiH-71210 Iliđa  
 Osik 2 b  
 Tel.: +387 33 566 770  
 info@baumit.ba  
 www.baumit.ba  
**In charge of: ME**

**DE - GERMANY**  
**Baumit GmbH**  
 D - 87541 Bad Hindelang/Allgäu  
 Reckenberg 12  
 Tel.: +49 83 24 921-0  
 info@baumit.de  
 www.baumit.de  
**In charge of: BE, NE, LU, DK, NO, FI, SE**

**FR - FRANCE**  
**Baumit SAS**  
 FR - 77360 Vaires-sur-Marne  
 1 Impasse de la Centrale  
 Tel.: +33 1 762 170 21  
 office@baumit.fr  
 www.baumit.fr

**HU - HUNGARY**  
**Baumit Kft.**  
 H - 2510 Dorog, Baumit út 1.  
 H - 2511 Dorog, Pf.: 132.  
 Tel.: +36 33 512 910  
 baumit@baumit.hu  
 www.baumit.hu

**IT - ITALY**  
**Baumit S.p.a.**  
 I - 33078 - San Vito al Tagliamento (PN)  
 Via Lusevera, 3 -  
 Z.I. Ponte Rosso  
 Tel.: +39 0434 1850980  
 info@baumit.it  
 www.baumit.it

**BG - BULGARIA**  
**Baumit Bulgaria EOOD**  
 BG - 21 00 Elin Pelin  
 Bulgaria Str. 38  
 Tel.: +359 2 926 69 11  
 office@baumit.bg  
 www.baumit.bg

**CZ - ČZECH REPUBLIC**  
**Baumit, spol. sr.o.**  
 CZ - 250 01 Brandýs nad Labem  
 Průmyslová 1841  
 Tel.: +420 326 900 400  
 info@baumit.cz  
 www.baumit.cz

**ES - SPAIN**  
**Baumit S.L.**  
 ES - 28935 Móstoles (Madrid)  
 P.I. Las Nieves, c/ Puerto de Cotos, 16  
 Tel.: +34 916 407 227  
 info@baumit.es  
 www.baumit.es  
**In charge of: PT**

**GR - GREECE**  
**Baumit A.E.**  
 GR - 15235 Vrilissia-Athens  
 142, Pentelis avenue  
 Tel.: +30 210 6095600  
 info@baumit.gr  
 www.baumit.gr  
**In charge of: CY**

**HR - CROATIA**  
**Baumit d.o.o.**  
 HR - 10090 Zagreb  
 Vučak 34  
 Tel.: +385 1 346 68 00  
 baumit@baumit.hr  
 www.baumit.hr

**LT - LITHUANIA**  
**Baumit UAB**  
 LT-14188 Lithuania  
 Ukmergės g. 364, Vilnius  
 Tel.: +370 5 264 07 78  
 info@baumit.lt  
 www.baumit.lt  
**In charge of: LV, EE**





# Index

## A

Academy 75  
Adjustment packing shims 59

## B

Backing Board Fixing 53  
Base Profile (Aluminium) 54  
Base Profile Therm 54  
Base Profile Therm Extension 54  
BituFix 2K 43

## C

Cement Board Edge Bead 55  
Ceramic F 45  
Ceramic S 44  
CeramicFix 45  
Corner Bead 56  
Colour Chart 8  
CreativTop 30  
CrystalActivator 24  
CrystalTop 25

## D

Diagonal Arrow Mesh 56  
DIPK 52  
DP85 62  
Drip Bead 55  
DS 26 Flex 43  
Dual Density Slab 47

## E

EasyPrimer 75  
Expansion Joint E-Profile 59  
Expansion Joint V-Profile

## F

FinishExpert 70  
FinishSuperior 69  
FinishLight 69  
FinishMax 70  
Filling Foam 59  
FinoFill 70  
Fire Pins 52  
Flashing Bead 55  
FungoFluid 37

## G

Glitter 20  
GranoporColor 19  
GranoporTop 28

## H

H3 Hammer Fixing 51

## J

Joint Seal Band 43

## K

Klima Glätt W 72  
Klima KP 36 W 55  
Klima RK 38 55  
Klima RK 39 71  
Klima RK 70 N 71  
Klima RK 70 N See Multifine RK 70 N  
KlimaColor 72  
KlimaDekor 70  
KlimaFinish 70  
KZP 65 62

## L

Lasur 21  
Life Colours 10  
LS62 62

## M

Mesh 20 See StarTex  
Metallic 20  
Mineral Wool EWI Slab 47  
MonoPlus 61  
MonoTex 48  
Montage 59  
MosaikTop 32  
Movement Joint 55  
MP69 62  
MultiContact MC 55 W 64  
MultiFine RK 70 N 64  
MultiPrimer 36

## N

N 51  
Nail Anchors 53

## O

OpenTherm reflectair 46  
Over Sill Trim 57

## P

PlinthTherm XPS 47  
PowerFlex 43  
PremiumPrimer 37  
PuraColor 19  
PuraTop 28  
PutzFestiger See SanovaPrimer  
PVC Profile Clip 6mm 54

## R

ReCompact See SanovaPrimer  
Return Drip Bead 55

## S

S 51  
S EPS Plug 53  
S Tool  
Sanova SP Grey / SP 64 P  
SanovaPre / SV 61  
SanovaPrimer 46  
SBH-T washer 57  
SEP  
SilikatColor  
SilikatTop  
SilikonColor  
SilikonFine 47  
SilikonTop 43  
SpeedTop 37  
SpeedTop Star 19  
SperrGrund 28  
Spiral Anchor  
StarColor  
StarContact  
StarContact White  
StarSystem EPS  
StarSystem Mineral  
StarSystem Nature  
StarTherm Resolution  
StarTex 55  
StarTop  
StarTrack  
Stop Bead with Mesh  
STR H  
STR U 2G  
STR U Plug  
STR U Rondelle  
SupraFix  
SX Airless

## T

Tiefengrund. 50 See MultiPrimer

## U

UniPrimer 36  
Universal Full End Caps 53  
33

## V

Verge Trim 27 57  
VS 60 27 62

## W

Window Profile Flexible 18 56  
Window Profile Ideal 42 56



# Baumit MonoPlus

Through coloured one coat scratch render



Baumit MonoPlus offers a low maintenance, weather resistant and highly durable render system for new build and renovation projects.



#### ALGAE RESISTANT

Unique formulation designed to reduce the effects of algae and minimise the need for as regular cleaning and maintenance.\*



#### HAND & MACHINE APPLICATION

Formulated to be spray applied for faster application, but equally able to be applied by hand.



#### SUBSTRATE SUITABILITY

Application can be made to a range of substrates including brick, standard block and medium density block.



#### COLOUR VARIANTS

Following market research into colour trends and demand, MonoPlus is available in a choice of 6 different colour options.



#### PRODUCT WARRANTY

Issue a Baumit product and installation warranty for up to 10 years ensuring peace of mind for the homeowner.



#### CONSISTENT FINISH

Uniform 1.2 mm fine grain size is lighter in weight to scratch back, so reducing waste.



#### MULTIPLE FINISH OPTIONS

Creativity is provided with the opportunity to finish Baumit MonoPlus in a variety of finish options; Monocouche, Dry Dash, Wet Dash and Rough Cast.

