

SHADES OF WHITE



Baumit white tones

Shades of White

- **12 unique white tones**
- **For the perfect white façade**
- **Simplicity and style united**

Colour trends come and go but classic white will always remain a popular choice – especially on the façade!
In combination with black it's often the only thing you need to create perfect harmony.



The effect of white.

White is the sum of all colours of light and in its purest form, is also their absence. White looks clean and clear, but also cool and businesslike.

The effect of white façades is as stunning as that of any colour. Choosing the right white tone for your façade is often anything but an easy decision.

No wonder, because the wall colour white is rarely just white. Pure White? Off-White? Warm white? Cold white? Even small variations can make huge differences in the appearance of the building. Warm white colours have undertones of red, orange and yellow, resulting in a soft glow and welcoming vibe.

Cooler whites have hints of green, blue and violet, contributing to a clean and fresh look.

12 Shades of White

To limit the almost boundless possibilities, Baumit took the 12 most beautiful white tones and combined them to produce a unique colour collection – The Baumit “12 Shades of White” palette. From Star to Ivory, from Opal to Ice. Feel free to choose from the selected tones to give your project a timeless appearance – as always in the well-known Baumit high quality. With the moodboards on the following pages you will get to experience a first impression of the exceptional 12 Shades of White by Baumit.

Cool down

As well as the clean and timeless appearance of white façades they also have a functional side as well. They reflect a large amount of solar radiation, which helps reduce the heat buildup in cities during the hot summer months.



StarWhite

W 1200



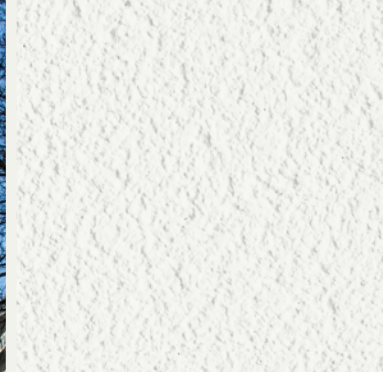
Exposed Concrete



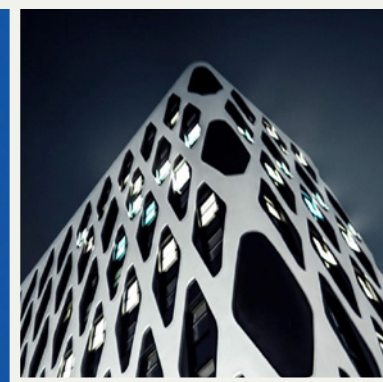
Geometric Porcelain



Cool Metal



StarWhite — W 1200



Nobel Tower

Architect: Iron Tower Investment, Piotr Z. Barelkowski

Location: Poznań, Poland



MineralWhite

W 1201



Modern Steel



Stone Tessellation



Crystallised Quartz



MineralWhite — W 1201



A house among the trees

Architects: Šebo Lichý, Tomáš Šebo, Igor Lichý, in cooperation with Katarína Uhnáková, Štefan Onofrej, Martina Matušová. Location: Bratislava, Slovakia



CottonWhite — W 1202

CottonWhite

W 1202



Light Oak



Travertin Bricks



Burlap Fabric



Maar Family House

Architect: Pokorný architekti s.r.o.

Location: Záhorská Bystrica, Slovakia



ChampagneWhite

W 1203



Beech Coating



Marbling Pattern



River Gravel



ChampagneWhite — W 1203



Osiedle Nad Stawem

Architect: Biuro Architektury Stosowanej

Location: Krakow, Poland



LaceWhite

W 1204



Floral Chantilly



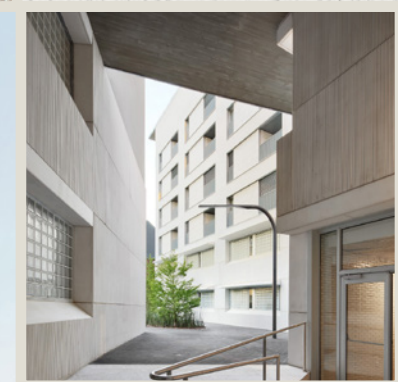
Sand Stone



Vale Haze



LaceWhite — W 1204

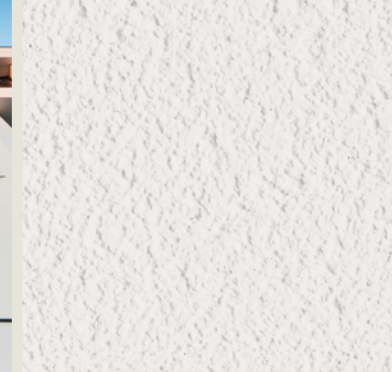


Collective housing and Health Centre

Architect: Ute Bonelli | Gil & Peris + Toral

Location: Barcelona, Spain





IvoryWhite — W 1205

IvoryWhite

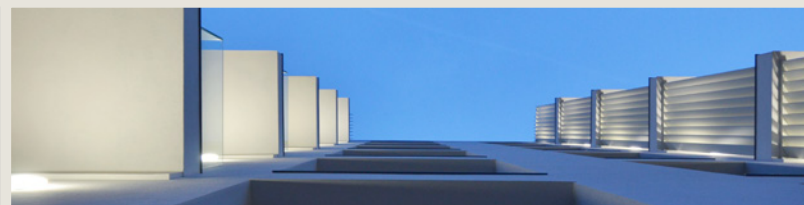
W 1205



Breezing Wheatfield

Soft Linen

Ebony & Ivory



Cismigiu House

Architect: TAG Architecture – Monica Sache

Location: Bucharest, Romania. Picture copyrights: Borgat



OpalWhite

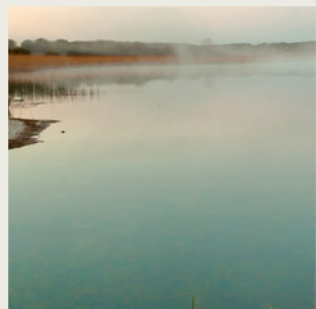
W 1206



Iridescent Bicones



Twofold Glazing



Morning Dew



Casa Galgo

Architects: Clara Matilde Moneo Feduchi & Valerio Oriol Canals Revilla

Location: Madrid, Spain



AntiqueWhite

W 1207



Scandinavian Chic



Vintage Wood



Archaic Sculpture



AntiqueWhite – W 1207



Wien Favoritenstraße

Architect: Millik + Neffe

Location: Wien, Austria



CeramicWhite

W 1208



Industrial Design



Black Slate



Rustic Stoneware



CeramicWhite — W 1208



Panorama Koliba

Architects: Peter Moravčík, in cooperation with Tomáš Čechvala and Andrea Černá

Location: Bratislava, Slovakia



MagnoliaWhite

W 1209



Flowing Corals



Glazed Marble



True Softness



MagnoliaWhite — W 1209



Wing House

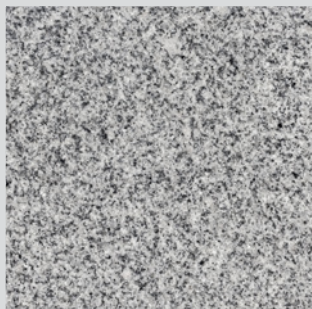
Architect: Bogdan Neagu - NBC Arhitect Bucharest

Location: Corbeanca, Ilfov County, Romania

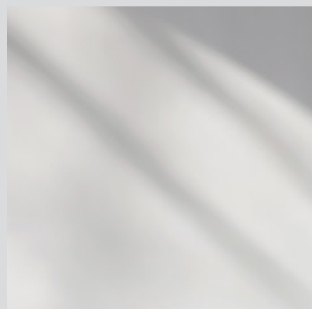


ShadowWhite

W 1210



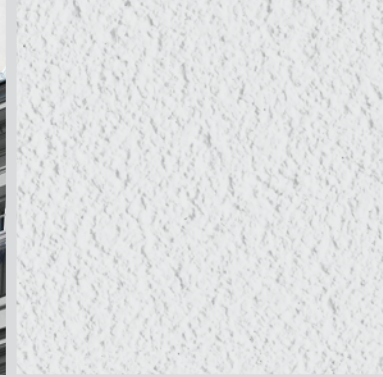
Durable Granite



Incidence of Light



Traditional Stucco



ShadowWhite — W 1210



Wien Taubstummengasse

Architect: Architekt Weinmann and Partner Ziviltechnikergesellschaft mbH

Location: Wien, Austria



IceWhite

W 1211



Polished Titan



White Brick



Luminous Winter



IceWhite — W 1211



Herdade Da Aroeira

Architects: Espaço Arquitectos- Projectos de Arquitectura, Isidro Afonso Ampaio da Silva, Patrícia da Cruz Pragana. Location: Lisbon, Portugal



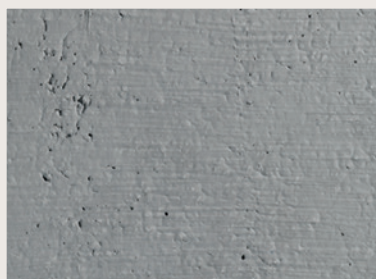
White Never Goes Out of Style



Baumit CreativTop

Take an already great product and make it even better! That's what we did with our well proven Baumit CreativTop. The new recipe makes it easier to use, but it is also equipped with the unique Baumit Drypor Effect. Once cured, this effect creates a quick drying surface after rain fall significantly reducing the risk of algae and mould infestation.

- For a fast drying (post application) wall surface (Drypor)
- Unlimited design possibilities
- Improved processing properties



Baumit StarTop

Highly weatherproof topcoat render, complete with silicone binder. Once cured provides the building with a quick drying surface after rain fall.

- For a fast drying wall surface
- Increased protection against algae and mould
- Easy application



Baumit SilikonTop

Ready-to-use, silicone resin render for external use. A highly durable render, suitable for almost all requirements. Water vapour permeable, extremely water repellent, dirt-resistant and versatile.

- Premium protection
- Water and dirt repellent
- High coverage



