



The perfect thermal insulation



Baumit External Wall Insulation
***Warm in winter,
cool in summer***



Efficient thermal insulation

The most effective method for creating a healthy living space is to efficiently insulate the façade. The better the insulation, the more comfortable it will be. This is good for our health and reduces energy consumption.

Efficient thermal insulation

A complete thermal insulation system or external wall insulation system (EWI), is a system consisting of tested components for insulating the exterior of buildings. It represents an excellent long-term investment in your house. You benefit immediately from a better quality of life and reduce your energy costs from the very first hour.

A complete system

Baumit offers high-quality Baumit EWI systems consisting of efficient insulating materials, proven adhesives and innovative topcoats. External wall insulation systems protect your walls from external influences and ensure a stress-free, dry wall structure. But above all, good insulation keeps the inside temperature consistent.

Warm in winter - cool in summer

In the summer, it provides optimal thermal protection and keeps the walls from overheating. In the winter, it helps the walls to stay warm. High-quality plaster systems are then applied that protect against weathering.





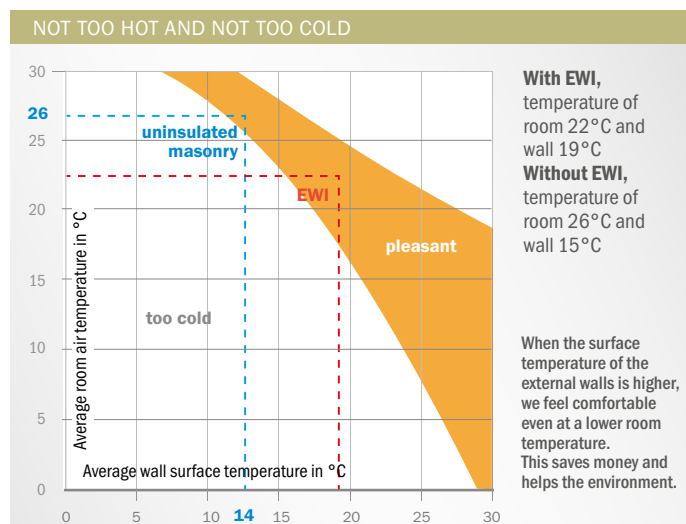
Benefits of EWI



Room temperature

How warm or cold we find a room depends on two factors: the air temperature and the surface temperature of the indoor walls.

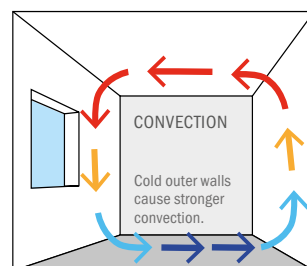
Without insulation the internal wall surface will remain below the internal air temperature having a noticeable effect on comfort. To enhance comfort, constant heating will be required hugely impacting energy costs. When exterior walls are well insulated, the surface temperature of the internal walls can closely match in the indoor air temperature, even in winter.



Lower convection

For the most pleasant and comfortable room temperature, a different between the air and surface temperature of a wall should be no more than 3°C.

Anything greater than 3°C will lead to unpleasant air currents caused by warm air, followed by cold air rising – know as convection. But the installation of thermal insulation can reduce this effect and increase comfort without the need for additional heating.



COLD WALLS CAUSE DISCOMFORT

Which temperature for which room?

Room	Optimum temperature
Living rooms and studys	20 - 22°C
Bedroom	17 - 18°C
Children's room	20 - 22°C
Kitchen	18°C
Bathroom	23°C
Cellar	10 - 15°C



Air humidity

As well as temperature, the right humidity is also important for achieving the perfect indoor climate. This should ideally be between 40 and 60%.

If below 30% the low humidity causes the nose and throat to dry out and can also lead to dry eyes. Additionally, wooden floors and furniture can dry out and encourage more dust, allowing bacteria and viruses to remain suspended in the air for longer, increasing the risk of bad health.

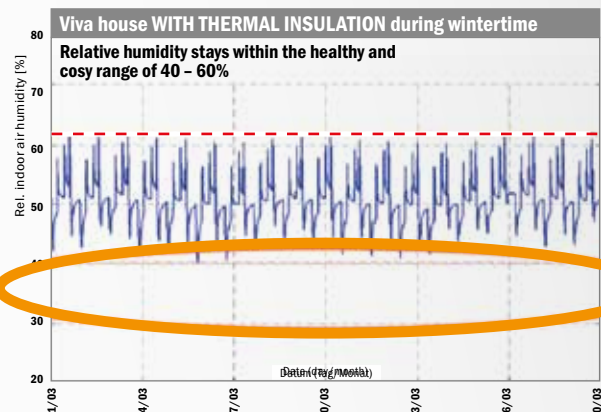
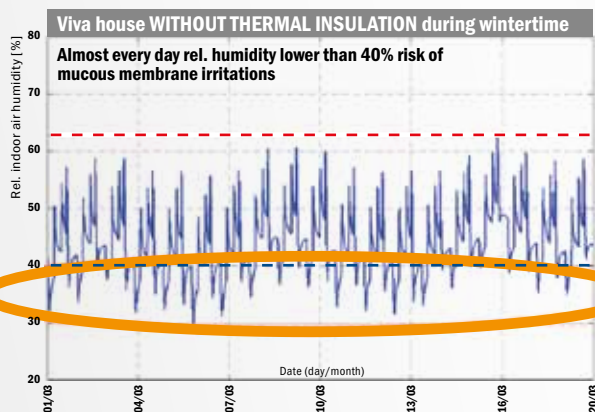
If humidity is too high, the air can become unable to adequately absorb moisture dispersed in the room leading to condensation and the formation of mould, especially during cold weather. This can have

huge effects on health; mould increases the risk of developing asthma by 50% and the risk of allergies by 30%.

But thermal insulation has a positive effect on relative humidity, by creating a balanced room climate.



EXTERNAL WALL INSULATION REGULATES HUMIDITY





Mould prevention

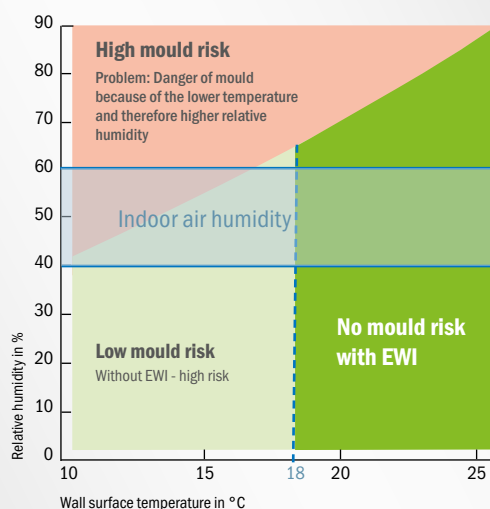
Mould spores are always present inside houses, but it is when they are met with damp that they become harmful and can contribute towards poor health and allergic reactions. Moisture creates the perfect breeding ground for mould, so getting the right balance of warmth and humidity is key to reducing the risk of condensation.

The combination of effective thermal insulation and the right choice in plaster system, such as Baumit Klima internal plasters which are lime based with climate-regulating and mould preventing

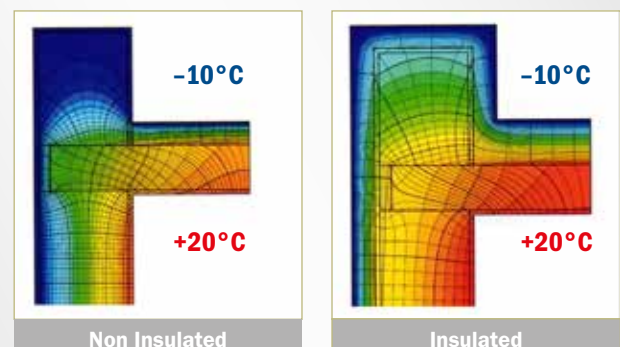


properties, will allow you to create a healthy living environment.

IDEAL INDOOR CLIMATE



THERMAL BRIDGES





Energy Saving

Badly insulated, and more particularly, uninsulated buildings allow much of the expensively generated heating to escape via the roof and facades. But with the correct insulation there will be an enormous improvement on internal comfort and energy savings on heating.

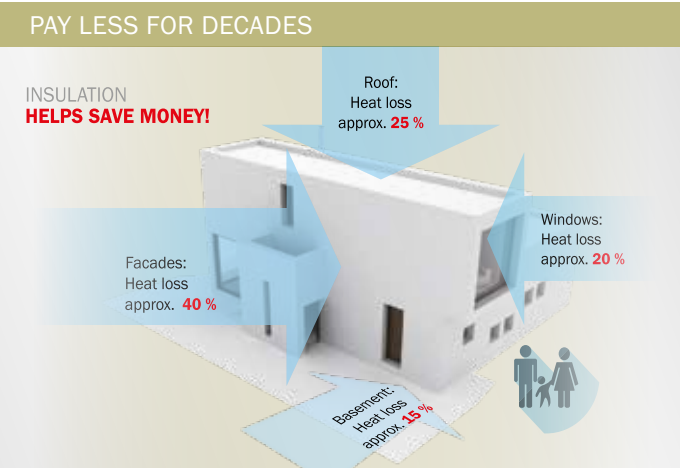
You can reduce your energy costs by 50% by making thermal improvements to your house - minimise heating costs during the winter months and reduce air conditioning during the summer months and save all year round. And if you are building a new home, it is even possible to a Passive House or zero energy home.

Reduce Construction Costs

Selecting the right external wall insulation system during the planning process can save not just time but also money when it comes to build costs.

An EWI system makes it possible to slim down the thickness of the masonry, reducing brick thickness and hence construction costs. You will also save in the long-term as an EWI system protects the masonry like a reinforcing layer, providing protection from temperature fluctuations, weathering and driving rain. Additionally, EWI requires less little maintenance overtime.

The benefits of EWI really are many.



Insulation First **Baumit External Wall Insulation Systems**



- Effective thermal insulation
- High energy saving potential
- Protection of the building structure
- Heat protection in summer
- Increase property value
- A comfortable indoor climate throughout the year
- Freedom of design & creativity




SYSTEMS

To help create a comfortable, ambient room temperature, Baumit has created a wide variety of EWI systems: For the insulation of any kind of home, including high-rises. All systems can be customised to suit the corresponding substrate to achieve the desired effects and characteristics.

COMPONENTS

Well aligned Baumit components guarantee a long lasting thermal solution. It is crucial to choose the right adhesive and reinforcing mortar, which is perfectly coordinated with both the insulation material and the substrate. Baumit offers the right products for every application and every requirement, a range of topcoats as well as a wide range of accessories to perfectly complete your External Wall Insulation (EWI) System.

EWI Systems

	OPENSYSTEM	STARSYSTEM EPS	STARSYSTEM MINERAL
			
	<ul style="list-style-type: none"> ■ Unique OpenAir technology ■ Breathable ■ New build and refurbishment 	<ul style="list-style-type: none"> ■ BBA approved system ■ Flexibility and protection ■ Available in a wide range of solutions 	<ul style="list-style-type: none"> ■ BBA approved system ■ Fireproof ■ Highly permeable
ADHESIVE	StarContact White	StarContact White	StarContact White
INSULATION	OpenTherm	StarTherm	Mineral Wool EWI Slab
FIXINGS	StarTrack	STR U 2G	STR U 2G
BASECOAT	StarContact White	StarContact White	StarContact White
REINFORCEMENT	StarTex	StarTex	StarTex
PRIMER	PremiumPrimer	PremiumPrimer*	PremiumPrimer*
TOPCOAT	StarTop / SilikonTop	StarTop / SilikonTop	StarTop / SilikonTop

The external wall insulation systems must be applied in accordance with Baunit recommendations and current best practice. Refer to Baunit Product Data Sheets for further information.

STARSYSTEM NATURE



- Wood fibre for natural insulation
- Highly breathable
- 100% recyclable

StarContact

StarTherm Nature

STR U 2G

StarContact

StarTex

PremiumPrimer*

StarTop

POWERSYSTEM



- High impact resistance
- For extreme requirements
- Cement free

StarContact White

StarTherm

STR U 2G

PowerFlex

StarTex

PremiumPrimer*

StarTop

PLINTHSYSTEM



- Water-repellent
- Resistant to mechanical stresses
- Ideal for renovation

StarContact White / BituFix 2K

PlinthTherm

STR U 2G

StarContact White

StarTex

PremiumPrimer*

**MosaikTop &
DS 26 Flex (sealing layer)**

ADHESIVE

INSULATION

FIXINGS

BASECOAT

REINFORCEMENT

PRIMER

TOPCOAT

*UniPrimer can be used as a substitute to PremiumPrimer



Baunit OpenSystem

Breathable insulation



- **Unique Open technology**
- **Breathable**
- **Cosy healthy climate**

Whether you are building a new home or refurbishing an old one, Baunit OpenSystem is the best solution. All components are vapour permeable and thus allow the walls to breathe. This creates optimal living conditions whether in summer or winter.

The Baunit OpenSystem uses EPS boards containing numerous holes of about 2 to 3mm diameter. These ensure high vapour permeability and enable water vapour to be released externally.

99% air

The OpenSystem consists of 99% air and only a small proportion of EPS, which in turn requires very little energy to produce, therefore resulting in low environmental impact.

How it works

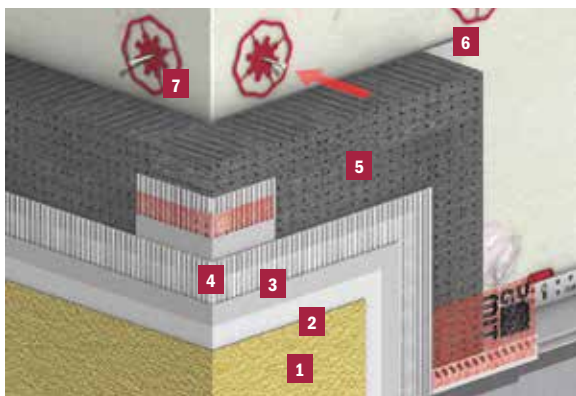
In addition to the temperature, an important factor in enabling a comfortable living climate is relative humidity. With typical indoor temperatures of between 19 and 22°C, humidity should be between 40 to 60%. Therefore approximately 10 litres of water vapour per household per day needs to be diffused to the outside. Baunit OpenSystem with its high breathability ensures a comfortable indoor climate.

A façade that lasts

The Baunit OpenSystem has some notable features that help buildings to not only perform well but also to look good for many years to come.

The Baunit OpenSystem combines the best fixing technology, vapour permeability and high performance insulation. It helps to create a building that will last for decades to come.












BENEFITS

- Complete wall build-up
- Breathable and highly vapour permeable
- Prevents condensation from water vapour
- Ensures a comfortable indoor living climate



SYSTEM COMPONENTS

- | | | |
|----------|--|---|
| 1 | Baumit StarTop
Easy to apply topcoat render

Baumit SilikonTop
Easy to apply silicone resin render |  |
| 2 | Baumit PremiumPrimer
Superior quality primer |  |
| 3 | Baumit StarContact White
Vapour permeable adhesive and basecoat reinforcing mortar |  |
| 4 | Baumit StarTex
High performance reinforcing mesh |  |
| 5 | Baumit OpenTherm
Vapour permeable EPS façade insulation board |  |
| 6 | Baumit StarContact White
Vapour permeable adhesive and basecoat reinforcing mortar |  |
| 7 | Baumit StarTrack
Unique supplementary anchor fixing |  |



Baumit StarSystem EPS

The classic solution

- **BBA approved system**
- **Flexibility and protection**
- **Offers a broad range of solutions**

Baumit StarSystem EPS provides great flexibility as well as good impact resistance and combines all Baumit's experience as a pioneer in External Wall Insulation systems.

An investment in the future

The combination of a comfortable indoor climate and energy efficiency leads to an improved quality of life for the buildings occupants. Baumit StarSystem EPS helps to increase the value of a building by offering insulation together with an attractive façade.

A durable basecoat

Baumit StarContact white adhesive and reinforcing mortar ensures that the façade remains adhered to the brick/blockwork no matter what the temperature fluctuations, wind speeds or other environmental challenges may be. It is elastic and flexible and so, over time, it stretches and flexes as required and offers excellent resistance to objects that impact the surface.

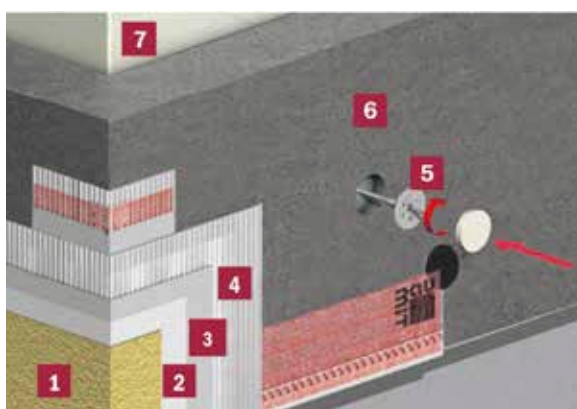


Superior quality

Baumit PremiumPrimer can be used with all organic and mineral decorative finishes, for pretreatment of hard or absorbent mineral substrates as well as for the preparation of coloured substrates.

The grey EPS façade insulation board, Baumit StarTherm consists of expanded polystyrene. It is highly vapour permeable and has excellent insulating properties.





BENEFITS

- BBA approved system
- Excellent flexibility and impact resistance
- Weatherproof
- Easy to apply
- Security for generations



SYSTEM COMPONENTS

- | | | |
|----------|--|---|
| 1 | Baumit StarTop
Easy to apply topcoat render

Baumit SilikonTop
Easy to apply silicone resin render |  |
| 2 | PremiumPrimer
Ready-to-use superior quality primer |  |
| 3 | Baumit StarContact White
Vapour permeable adhesive and basecoat reinforcing mortar |  |
| 4 | Baumit StarTex
High performance reinforcing mesh |  |
| 5 | Baumit STR U 2G*
Screwed anchor fixing

<i>*Depending on substrate</i> |  |
| 6 | Baumit StarTherm EPS
Grey EPS façade insulation board |  |
| 7 | Baumit StarContact White
Vapour permeable adhesive and basecoat reinforcing mortar |  |



Baumit StarSystem Mineral

The all-rounder

- **BBA approved system**
- **Fire resistant**
- **Highly permeable**

Baumit StarSystem Mineral is a mineral external wall insulation system suitable for all building classes.

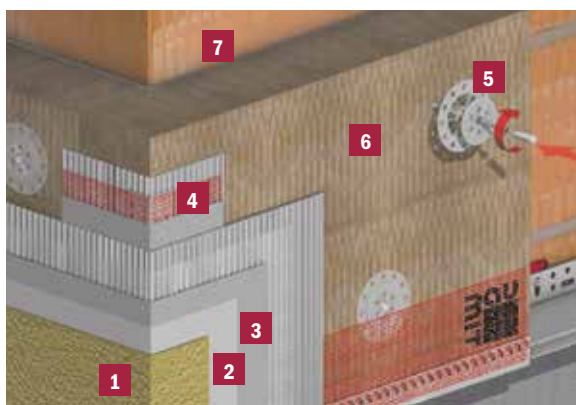
Mineral wool boards when used as a thermal insulation layer are covered with a reinforcing layer consisting of a basecoat and fibreglass mesh. The weather-resistant top coat is applied over this.



Mineral external wall insulation

The insulation board Mineral Wool EWI Slab contains no combustible components. They are made of mineral wool fibres, which are bonded to a board with resins. The system stands out due to its excellent sound and fireproofing properties as well as being highly vapour permeable. It noticeably improves the indoor climate.

Baumit StarSystem Mineral can be applied to all substrates. It is suitable for old and new buildings as well as for single and multiple family homes, and also for commercial construction.



BENEFITS

- BBA Approved system
- Suitable for all load-bearing substrates
- Non-combustable
- Excellent physical properties
- Sound proofing properties
- Excellent vapour permeability



SYSTEM COMPONENTS

- 1** **Baumit StarTop**
Easy to apply topcoat render
- Baumit SilikonTop**
Easy to apply silicone resin render



- 2** **Baumit PremiumPrimer**
Superior quality primer



- 3** **Baumit StarContact White**
Vapour permeable adhesive and basecoat reinforcing mortar



- 4** **Baumit StarTex**
High performance reinforcing mesh



- 5** **Baumit STR U 2G***
Screwed anchor fixing
**Depending on substrate*



- 6** **Mineral Wool EWI Slab**
High grade mineral fibre insulation boards.



- 7** **Baumit StarContact White**
Vapour permeable adhesive and basecoat reinforcing mortar





Baumit StarSystem Nature

Renewable resource

- **Wood fibre for natural insulation**
- **Highly breathable**
- **Noise reduction**

Meeting the strictest health and environmental standards, the Baumit NatureSystem is an ecological alternative. Wood, a sustainable material, is the central component of this system. This protects valuable natural resources and helps to reduce CO₂ emissions.

Free from additives

The core of the system is made up of the StarTherm Wood-fibre insulation boards. The multi-layered insulation boards are produced without any artificial binders. The timber's own lignin serves to bind the wood fibres together. During production, the fine wood fibres are heated whilst being pressed so that the lignin becomes fluid and glues the wood particles together during cooling.

Excellence in every respect

The good thermal values, vapour permeability, noise reduction capabilities and ecological reasons make this environmentally friendly insulation very attractive.

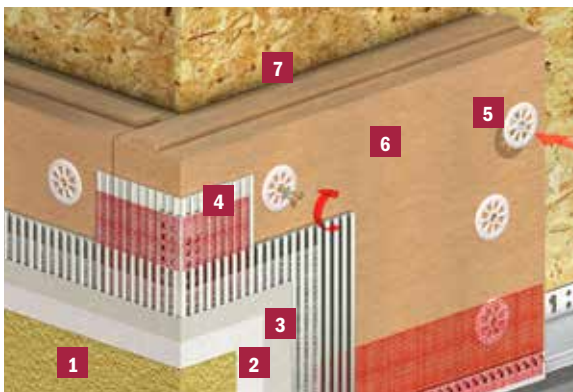
Breathable insulation

The Baumit StarSystem Nature has good thermal insulation values, is water vapour permeable and is environmentally friendly due to wood being a renewable resource. The components not only have a high heat storage capacity, they are also breathable.

Good environmental footprint

This natural insulation stands out over the entire life cycle, from production to disposal, due to its low environmental impact, making it an environmentally friendly alternative.





BENEFITS

- Sustainable and environmentally friendly
- Improves sound insulation
- Good thermal values
- Vapour permeable



SYSTEM COMPONENTS

1

Baumit StarTop
Easy to apply topcoat render



2

Baumit PremiumPrimer
Superior quality primer



3

Baumit StarContact
Vapour permeable adhesive and basecoat reinforcing mortar



4

Baumit StarTex
High performance reinforcing mesh



5

Baumit STR U 2G*
Screwed anchor fixing
**Depending on substrate*



6

StarTherm Nature
Wood fibre façade insulation board



7

Baumit StarContact
Vapour permeable adhesive and basecoat reinforcing mortar





Baumit PowerSystem

Best impact resistance

- **High impact resistance**
- **For extreme environments**
- **Cement-free basecoat**

Severe weather fluctuations appear to have increased dramatically in recent years and thermal insulation is not the only thing that needs to be considered in construction. Issues such as impact protection and weather resistance have also become a key factor to consider.

Tough and flexible

Baumit PowerSystem works by being tough and flexible at the same time. The toughness and elasticity of the system are perfectly balanced, which is beneficial for the façade.

Strong façades

There are a number of possibilities for protecting a façade – ranging from simple structural measures to high-tech building materials.

Effective façade protection is achieved with a highly flexible, strong shield, in which a fibreglass mesh is embedded. A high-quality Baumit façade render is then applied over the top. As well as having an attractive appearance, it also protects the layers underneath from moisture.



Ultimate solution for all around protection

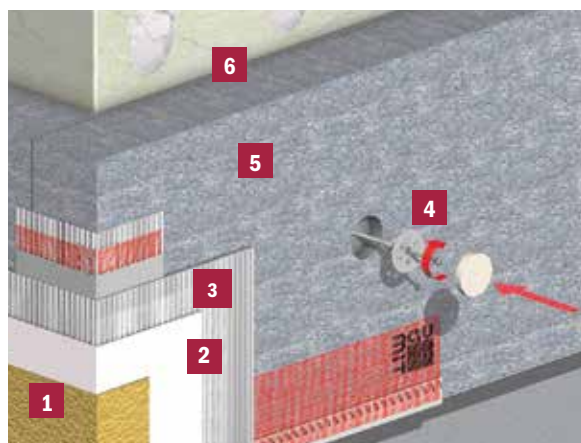
Designed to operate at the extremes of performance Power System offers our highest levels of crack resistance and weather protection, essential for good levels of health and thermal comfort.

Innovative protection

The heart of this system is reinforcement using Baumit PowerFlex. This cement-free, ready mixed reinforcing mortar is a powerful innovation from the Baumit Research Centre.

Particularly high-quality binders combined with very elastic fibres and precisely dosed fillers make Baumit PowerSystem the best impact protection for thermal insulation.

Baumit PowerSystem is ideal for use with Baumit StarTherm insulation whenever more resilience is required.



BENEFITS

- Highly effective impact protection
- Weather protection all year round
- Thermal insulation and resilience in one
- For high mechanical stresses



SYSTEM COMPONENTS

1

Baumit StarTop
Easy to apply topcoat render



2

Baumit PowerFlex
Reinforcing coat



3

Baumit StarTex
High performance reinforcing mesh



4

Baumit STR U 2G*
Screwed anchor fixing
**Depending on substrate*



5

Baumit StarTherm EPS
Grey EPS façade insulation board



6

Baumit StarContact white
Vapour permeable adhesive and basecoat reinforcing mortar





Baumit PlinthSystem

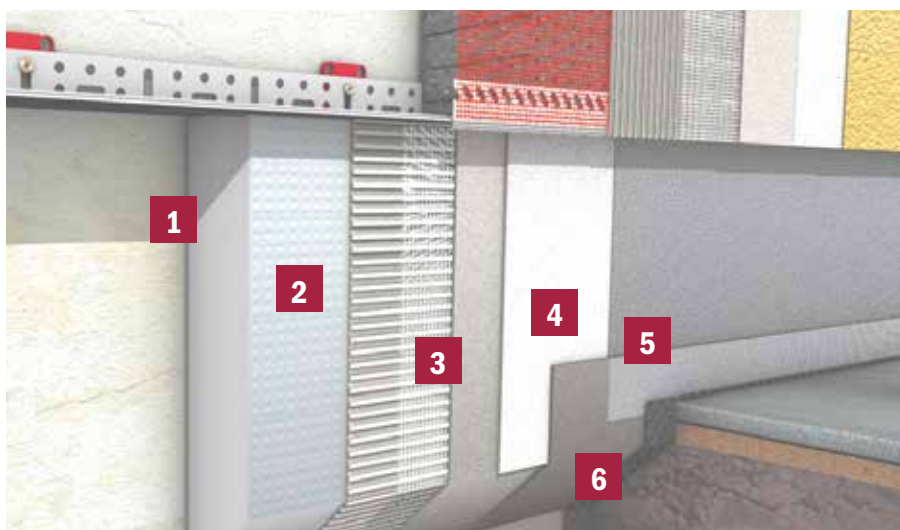
Reinforcing plinth solution

- **Reliable protection**
- **Water-repellent and resistant to mechanical stresses**
- **Ideal for renovation**

The plinth and perimeter area is one of the most highly stressed areas of a building. It has to contend with rainfall, splashing and high levels of mechanical stress.

The render should always be waterproofed on the plinth area, waterproofing provides additional protection for particularly vulnerable areas.

The detailed image of the base below shows the recommended build up. It is always necessary to apply a reinforcing coat.



SYSTEM COMPONENTS

- 1** **Baumit BituFix 2K or StarContact White**
Depending on substrate
 
- 2** **Baumit PlinthTherm**
High density XPS board.
 
- 3** **Baumit StarContact White**
Vapour permeable adhesive and basecoat reinforcing mortar
 
- 4** **Baumit Premium Primer**
Superior quality primer.
 
- 5** **Baumit MosaikTop**
Ready-to-use, acrylic based render for external use
 
- 6** **Baumit DS 26 Flex**
Flexible and universal for use as a sealing layer
 



Baumit Components

StarTrack and Fixings

- **Saves energy, time and costs**
- **One size fits all**
- **Accuracy in application**

EWI systems with EPS insulation boards must be fixed onto various surfaces using supplementary fixings along with an adhesive bond. The Baumit StarTrack range has a solution for every substrate. Baumit StarTrack fixings are anchored in the supporting masonry and are covered with a dab of adhesive before gluing the insulation boards.

This creates the required supplementary fixing point to the supporting masonry without piercing the insulation, thereby ensuring there are thermal bridges.



The Baumit adhesive anchors are inserted into the borehole and secured with plastic nails.



The Baumit adhesive anchors are offset in height, maximum 40 x 40 cm.

ADDITIONAL EWI SYSTEM FIXINGS

- H3 Hammer fixing, a universal hammer-in anchor with plastic expansion pin.
- STR U 2G, a recessed or surface fixed screw-set anchor.



Baumit H3 Hammer Fixing



Baumit STR U 2G

BAUMIT STARTRACK & DOWELS OVERVIEW

Baumit StarTrack Fixing	Anchor depth in mm	A	B	C	D	E
		Standard Concrete	Standard Masonry	Hollow and perforated masonry	Lightweight Concrete	Aerated Concrete
Baumit StarTrack Orange	≥ 40 ¹⁾	●	●	●		●
Baumit StarTrack Red	≥ 40	●	●	●		
Baumit StarTrack Blue	≥ 40	●	●			
Baumit StarTrack Duplex	≥ 40 ¹⁾	●	●	●		●
Baumit S (STR)	≥ 25 (≥ 60)	●	●	●	●	●
Baumit N (NTK)	≥ 40	●	●	●		

1) Anchorage depth in aerated concrete: 60mm



Baumit Components

Accessories

- **For a range of areas**
- **Perfectly coordinated accessories**
- **All-round protection for the building**

External wall insulation systems come into contact with a variety of other components and materials: windows made of wood,

plastic or aluminium, balustrade that need to be fixed in the substrate. All of these connections must be protected against different stresses and strains – for example, driving rain or movement.

Well designed and well insulated

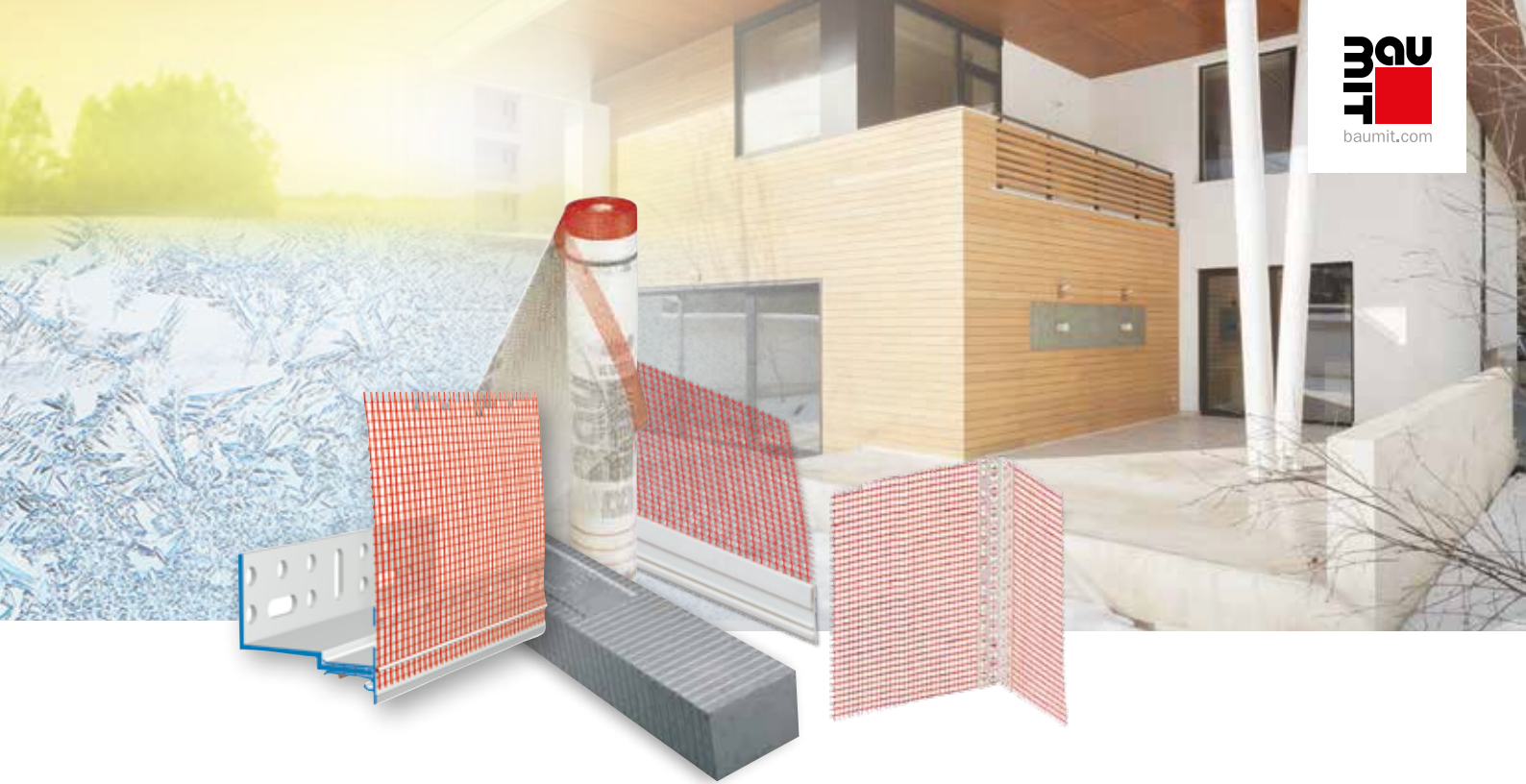
In order to be prepared for all the details during installation, the work should be planned as accurately as possible before it

starts. It should be ascertained in advance which areas of the building require special profiles to provide optimal protection against external influences and thermal bridges. Thermal bridges can be avoided if the joints at critical points are carried out using the right products. Secure connections ensure optimum insulation and protection from the elements.

USING THE SYSTEM

- 1 Baumit Base Profile Therm
- 2 Baumit Window Profile Flexible
- 3 Baumit Window Profile ideal
- 4 Baumit Corner Bead
- 5 Baumit Expansion Joint Profile
- 6 Baumit Montage





DETAILED SOLUTIONS

1 Baumit Base Profile Therm

The base – the foundation of the EWI system.

Baumit Base Profile Therm provides a thermal bridge-free solution for all base types and insulating materials, either as the lower end of the façade or to form a recessed base. The Baumit thermal base insertion profile is used as a supplement for all insulation regardless of the depth.

2 Baumit Window Profile Flexible

The window – doesn't give rain a chance.

The Baumit Window Profile Flexible, can absorb large movements in all directions. The decoupled construction is suitable for all insulation materials and thicknesses as well as most window constructions.

3 Baumit Window Profile Ideal

The window frame – reliability in planning and execution.

A key connection detail of EWI to other structural components in the window area is the window frame. This can be a particularly challenging area but an innovative solution has been created with the Baumit Window Profile Ideal.

4 Baumit Corner Bead

The edge – for precise angles.

The Baumit Corner Bead is suitable for external 90 degree angles. Soffits and window lintels can be finished exactly with the Baumit Drip Edge Profile which stops dirty streaks forming at the edge, as the water falls from the front edge of the bead.

5 Baumit Expansion Joint Profile

Joints - mobility is key.

The Baumit Expansion Joint Profile is used in alterations, extensions or between structural components with different constructions, when the joints run vertically. Cracks are now a thing of the past.

6 Baumit Montage

Mounting elements – intelligent installation.

The Baumit Montage Meter mounting element is used for attaching fixtures, such as letter boxes or lamps. During installation of EWI, it is fixed prior to applying the reinforced basecoat. After completion, the screws in the Baumit Montage Meter can be tightened. The load is carried via the EWI, with no thermal bridges.



OVERVIEW

Baumit Tops & Colours



**Baumit NanoporTop
& NanoporColor**



- Perfect application
- Mineral and breathable
- Long lasting cleanliness

self-cleaning	■	■	■	■	■
resistance	■	■	■	■	
diffusion	■	■	■	■	■
colour variations	■	■	■		
suitable for base area	■	■	■		
variety of textures	■	■	■	■	



self-cleaning	■	■	■	■	■
resistance	■	■	■	■	
diffusion	■	■	■	■	■
colour variations	■	■	■		
suitable for base area	■	■	■		
colour intensity	■	■	■		

**Baumit StarTop
& StarColor**



- Especially strong & durable
- The best moisture protection
- Better workability

self-cleaning	■	■	■	■	■
resistance	■	■	■	■	■
diffusion	■	■	■	■	■
colour variations	■	■	■	■	
suitable for base area	■	■	■	■	
variety of textures	■	■	■		



self-cleaning	■	■	■	■	
resistance	■	■	■	■	■
diffusion	■	■	■	■	
colour variations	■	■	■	■	
suitable for base area	■	■	■	■	■
colour intensity	■	■	■	■	

**Baumit PuraTop
& PuraColor**



- Brilliant colours
- Extremely durable
- For decorative surface design

self-cleaning	■	■	■		
resistance	■	■	■	■	■
diffusion	■	■	■		
colour variations	■	■	■	■	■
suitable for base area	■	■	■	■	
variety of textures	■	■	■		



self-cleaning	■	■	■		
resistance	■	■	■	■	■
diffusion	■	■	■		
colour variations	■	■	■	■	■
suitable for base area	■	■	■	■	■
colour intensity	■	■	■	■	■

Baumit final coatings form a protective shield against weathering of any kind. They not only ensure the visual appearance of a façade, but also the durability of the underlying thermal insulation and structure.

Baumit SilikonTop & SilikonColor	Baumit SilikatTop & SilikatColor	Baumit GranoporTop & GranoporColor	Baumit CreativTop & Lasur, Glitter, Metallic
			
			
<ul style="list-style-type: none"> ■ High coverage ■ Premium protection ■ Highly moisture & weather resistant 	<ul style="list-style-type: none"> ■ Breathable ■ Specialised for renovation ■ Proven façade colour 	<ul style="list-style-type: none"> ■ Weatherproof ■ Very good water repellency ■ Easy application 	<ul style="list-style-type: none"> ■ Endless design possibilities ■ Individual textures ■ Creative, colourful and unique
			
			
			



baumitlife.com

As colourful as your life

- **888 different possibilities**
- **Intense and beautiful**
- **Endless design variations**

Baumit Life offers an amazing range of 888 creative façade colours. This colour system is as beautiful, wide-ranging and individual as life itself.

888 colours with every feature you could wish for. For a long time, the individuality of a house was limited to the interior design. But times are changing and nowadays it is different: It is the façade that provides the building with a unique character.

Baumit therefore developed Europe's widest and most beautiful range of colours - the Baumit Life system. With 888 different colour shades, it offers almost complete freedom when it comes to façade design.

Whether you prefer delicate pastel shades or intense dark colours – Baumit Life enables unlimited design possibilities. The heart of the Life system consists of 94 main tones, each with additional 8 colour gradations. The system is rounded off by 6 white tones and 36 Mosaik tops.

Baumit Life

For inspiration and advice on choosing the best colour & product combination for your project visit **baumitlife.com**



Behind the colour code

Each one of Baumit's unique façade colour shades has its own colour code. Consisting of 4 figures; the first 3 figures refer to the number of the colour row and the last number shows the brightness graduation (ranked from 1 to 9, where 1 stands for the most intense colour tone and 9 for the lightest one).

0014	0021	0031	0041	0051	0061	0071	0081	0121	0131	0141	0151	0161	0171
0015	0022	0032	0042	0052	0062	0072	0082	0122	0132	0142	0152	0162	0172
0016	0023	0033	0043	0053	0063	0073	0083	0123	0133	0143	0153	0163	0173
0017	0024	0034	0044	0054	0064	0074	0084	0124	0134	0144	0154	0164	0174
0018	0025	0035	0045	0055	0065	0075	0085	0125	0135	0145	0155	0165	0175
0019	0026	0036	0046	0056	0066	0076	0086	0126	0136	0146	0156	0166	0176
	0027	0037	0047	0057	0067	0077	0087	0127	0137	0147	0157	0167	0177
	0028	0038	0048	0058	0068	0078	0088	0128	0138	0148	0158	0168	0178
	0029	0039	0049	0059	0069	0079	0089	0129	0139	0149	0159	0169	0179
0181	0191	0201	0211	0221	0231	0241	0281	0291	0301	0311	0321	0331	0341
0182	0192	0202	0212	0222	0232	0242	0282	0292	0302	0312	0322	0332	0342
0183	0193	0203	0213	0223	0233	0243	0283	0293	0303	0313	0323	0333	0343
0184	0194	0204	0214	0224	0234	0244	0284	0294	0304	0314	0324	0334	0344
0185	0195	0205	0215	0225	0235	0245	0285	0295	0305	0315	0325	0335	0345
0186	0196	0206	0216	0226	0236	0246	0286	0296	0306	0316	0326	0336	0346
0187	0197	0207	0217	0227	0237	0247	0287	0297	0307	0317	0327	0337	0347
0188	0198	0208	0218	0228	0238	0248	0288	0298	0308	0318	0328	0338	0348
0189	0199	0209	0219	0229	0239	0249	0289	0299	0309	0319	0329	0339	0349
0351	0361	0371	0381	0391	0401	0411	0421	0431	0441	0451	0461	0471	0481
0352	0362	0372	0382	0392	0402	0412	0422	0432	0442	0452	0462	0472	0482
0353	0363	0373	0383	0393	0403	0413	0423	0433	0443	0453	0463	0473	0483
0354	0364	0374	0384	0394	0404	0414	0424	0434	0444	0454	0464	0474	0484
0355	0365	0375	0385	0395	0405	0415	0425	0435	0445	0455	0465	0475	0485
0356	0366	0376	0386	0396	0406	0416	0426	0436	0446	0456	0466	0476	0486
0357	0367	0377	0387	0397	0407	0417	0427	0437	0447	0457	0467	0477	0487
0358	0368	0378	0388	0398	0408	0418	0428	0438	0448	0458	0468	0478	0488
0359	0369	0379	0389	0399	0409	0419	0429	0439	0449	0459	0469	0479	0489
0491	0501	0511	0521	0561	0571	0581	0591	0601	0611	0621	0631	0671	0681
0492	0502	0512	0522	0562	0572	0582	0592	0602	0612	0622	0632	0672	0682
0493	0503	0513	0523	0563	0573	0583	0593	0603	0613	0623	0633	0673	0683
0494	0504	0514	0524	0564	0574	0584	0594	0604	0614	0624	0634	0674	0684
0495	0505	0515	0525	0565	0575	0585	0595	0605	0615	0625	0635	0675	0685
0496	0506	0516	0526	0566	0576	0586	0596	0606	0616	0626	0636	0676	0686
0497	0507	0517	0527	0567	0577	0587	0597	0607	0617	0627	0637	0677	0687
0498	0508	0518	0528	0568	0578	0588	0598	0608	0618	0628	0638	0678	0688
0499	0509	0519	0529	0569	0579	0589	0599	0609	0619	0629	0639	0679	0689
0691	0701	0711	0721	0731	0741	0751	0761	0771	0781	0791	0831	0841	0851
0692	0702	0712	0722	0732	0742	0752	0762	0772	0782	0792	0832	0842	0852
0693	0703	0713	0723	0733	0743	0753	0763	0773	0783	0793	0833	0843	0853
0694	0704	0714	0724	0734	0744	0754	0764	0774	0784	0794	0834	0844	0854
0695	0705	0715	0725	0735	0745	0755	0765	0775	0785	0795	0835	0845	0855
0696	0706	0716	0726	0736	0746	0756	0766	0776	0786	0796	0836	0846	0856
0697	0707	0717	0727	0737	0747	0757	0767	0777	0787	0797	0837	0847	0857
0698	0708	0718	0728	0738	0748	0758	0768	0778	0788	0798	0838	0848	0858
0699	0709	0719	0729	0739	0749	0759	0769	0779	0789	0799	0839	0849	0859
0861	0871	0881	0891	0901	0911	0921	0931	0971	0981	0991	1001	1011	1021
0862	0872	0882	0892	0902	0912	0922	0932	0972	0982	0992	1002	1012	1022
0863	0873	0883	0893	0903	0913	0923	0933	0973	0983	0993	1003	1013	1023
0864	0874	0884	0894	0904	0914	0924	0934	0974	0984	0994	1004	1014	1024
0865	0875	0885	0895	0905	0915	0925	0935	0975	0985	0995	1005	1015	1025
0866	0876	0886	0896	0906	0916	0926	0936	0976	0986	0996	1006	1016	1026
0867	0877	0887	0897	0907	0917	0927	0937	0977	0987	0997	1007	1017	1027
0868	0878	0888	0898	0908	0918	0928	0938	0978	0988	0998	1008	1018	1028
0869	0879	0889	0899	0909	0919	0929	0939	0979	0989	0999	1009	1019	1029
1031	1041	1051	1061	1071	1111	1121	1131	1141	1151	1161			
1032	1042	1052	1062	1072	1112	1122	1132	1142	1152	1162			
1033	1043	1053	1063	1073	1113	1123	1133	1143	1153	1163			
1034	1044	1054	1064	1074	1114	1124	1134	1144	1154	1164			
1035	1045	1055	1065	1075	1115	1125	1135	1145	1155	1165			
1036	1046	1056	1066	1076	1116	1126	1136	1146	1156	1166			
1037	1047	1057	1067	1077	1117	1127	1137	1147	1157	1167			
1038	1048	1058	1068	1078	1118	1128	1138	1148	1158	1168			
1039	1049	1059	1069	1079	1119	1129	1139	1149	1159	1169			

Black: Available in any product

Red: Only available in PuraColor and PuraTop

Blue: Only available in PuraTop, PuraColor, StarTop, StarColor, GranoporTop, GranoporColor and CreativTop Max, Trend, Fine



Baumit Ltd

t: +44 (0)1622 710 763
e: contact@baumit.co.uk
w: baumit.co.uk

Unit 2 Westmead, New Hythe Lane,
Aylesford, Maidstone, Kent, ME20 6XJ

Baumit. Your home. Your walls. Your health.