

Baumit Renders for Porotherm Masonry
**Application
Guidelines**



Lightweight Render System

- Light and easy application
- Tried and tested
- EWI system compatible

Baumit offers a range of products suitable for application on Porotherm masonry. Baumit OPenSystem is vapour permeable and complements the breathable nature of Porotherm masonry. The products are suitable for machine application to increase efficiency and maintain consistent material quality during application.

Lightweight Render System

The Baumit render systems for Porotherm comprise of a basecoat render and a durable, coloured topcoat render. In certain circumstances an intermediary reinforcement coat may also be required.

Baumit Basecoat Renders

The core component of the system is the lightweight render basecoat MP 69. This render is specifically designed to suit Porotherm masonry in terms of strength compatibility and provides good weather resistance. The lightweight basecoat acts as a buffer zone between the masonry and topcoat render, absorbing stresses from the masonry and thereby reducing the risk of cracking to the topcoat.

Baumit Reinforcement Coat

A reinforcement layer of MC55w or StarContact White provides an extra level of protection to the render system when applied in locations exposed to severe or very severe weather conditions. It comprises of a 3 - 5 mm thick layer of contact mortar with an embedded layer of Baumit StarTex reinforcing mesh applied over the basecoat render.

The following products are suitable for internal and external use onto the Porotherm block substrate.

Porotherm Masonry	Baumit Basecoat Render
Porotherm T7, T8	Baumit MP 69
Porotherm S9, S11, T12	Baumit MP 69
Porotherm PLS100, PLS140, PLS190	Baumit MP 69





Site work

Preparing Porotherm Masonry

The rules for best practice must be observed when erecting Porotherm masonry. Breakages and loose materials, or open joints in the wall surface should be repaired and filled. Protect the masonry and building materials from water ingress during construction. The Porotherm masonry should be dry before rendering and remove any signs of efflorescence with a dry brush - do not use water. Remove any dust, dirt or other contaminants from the surface of the masonry.

General Basecoat Application

Baumit lightweight render systems are applied directly onto Porotherm masonry. Special surface pretreatments are not required. Where necessary, the walls may be mist sprayed with water to reduce high suction. Refer to our technical support team for guidance on dealing with changes in the rendering substrate, such as concrete elements, steel lintels or insulants etc.



- Spray or hand apply the render or plaster in two passes, wet on wet to reduce the suction from the masonry.



- Rule off the render or plaster to a straight edge to produce a flat uniform base coat free from undulations to the required thickness.



- On hardening, key the surface with a grid float or consolidate it with a rubbing up float.
- Leave to dry for 1 day per mm basecoat thickness before applying further coatings.



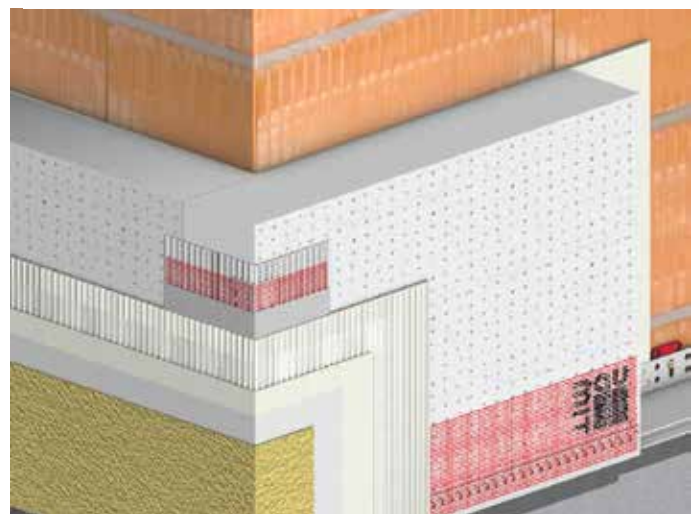
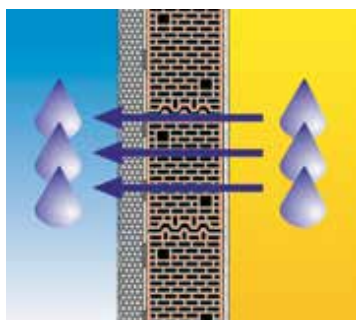


Full EWI System Solution for Porotherm Masonry

Baumit External Wall Insulation: OpenSystem

Whether you are building a new home or refurbishing an old one, Baumit OpenSystem is the best solution. All components are vapour permeable and thus allow the walls to breathe. This creates optimal living conditions whether in summer or winter.

The Baumit OpenSystem uses EPS boards containing numerous holes of 2 to 3mm diameter. These ensure high vapour permeability and enable water vapour to be released externally.



The Baumit OpenSystem has some notable features that help buildings to not only perform well but also to look good for many years to come. The Baumit OpenSystem combines the best fixing technology, vapour permeability and high performance insulation. It helps to create a building that will last for decades to come.

Recommended Products



Baumit MultiContact MC 55 W

Mineral based, multi-purpose contact mortar for use as a reinforcement coat with Baumit StarTex reinforcing mesh over render basecoats, old facades and selected render carrier boards.



Baumit Klima KP 36 W

Natural white, lime basecoat plaster for use in all internal areas. Special microporous design for rapid absorption and release of water vapour. Purely mineral and free from toxins.



Baumit SEP

Mineral based topcoat render for a decorative free-style textured finish. Weather resistant and water vapour permeable. For internal and external areas. Suitable for hand or machine application.



Baumit PremiumPrimer

Acrylic based liquid primer for use on internal and external areas which helps to reduce and equalise the suction on newly prepared surfaces and to ensure good adhesion for Baumit topcoat renders.



Baumit MP 69

Universal, lightweight lime-cement render with lightweight aggregate. Specially designed for use onto thermal insulating masonry as a basecoat and topcoat in internal and external areas.



Baumit StarTop

Baumit StarTop premium silicone render. The combination of high quality silicone binder and innovative functional filler creates unique properties for long-lasting protection of the façade, with a greater choice of colour..



Baumit Klima RK 39

Pure lime basecoat and topcoat plaster for use in all internal areas. Special microporous design for rapid absorption and release of water vapour. Purely mineral and free from toxins.



Baumit SilikonTop

Ready to use, mineral wet topcoat render for thin coat application. Provides a vapour permeable and stain resistant decorative finish with scratched or dragged grain texture. Suitable for hand or machine application.



Baumit Klima Glatt

Natural white lime skimming plaster for creating a fine smooth finish onto Klima basecoat plasters and other lime and lime-cement renders and concrete surfaces. For use on internal areas only.



Baumit GranoporTop

Ready mixed, synthetically bound, washable thin coat finish render, with excellent weathering capabilities. Suitable for use with any façade render system.



Beautiful and individual façades to last a lifetime

Baumit Topcoat Renders

The render system is completed with a decorative topcoat render to provide the essential water resistance to the outer surface of the render system. The Baumit renders are available in a range of aggregate sizes and over 888 colours from the Baumit Life colour range. Baumit ready mixed topcoat renders do not require painting.

Select from our range of topcoats, each with its own unique properties:

- Baumit StarTop - Premium silicone render
- Baumit SilkonTop - Flexible and elastic hardwearing render
- Baumit GranoporTop - Solid quality, all-round render



Application

A coat of Baumit PremiumPrimer is applied to the surface of the basecoat render with a brush or roller and left to dry for 24 hours. The topcoat render is then applied with a stainless steel plastering trowel or suitable spraying equipment and smoothed out flat to the thickness of the aggregate. After a short while the surface can be textured in tight circular motions using a smooth plastic floating trowel.

The topcoat render should be applied systematically to complete sections without breaks. A wet edge must be maintained to avoid inconsistencies in the finished texture.





Baumit Internal Lime Plaster Systems

Baumit Klima Plaster System

- **Modern and individual**
- **Fast application**
- **Enhances indoor air quality**

Whether you require the interior walls to be smooth, lightly or highly textured, the products in the Baumit Klima range with their indoor climate-regulating properties, when used together as a system offer the ideal solution.

Klima smooth system

This system transforms interior walls into uniquely smooth surfaces, giving them an exceptionally modern look. Baumit Klima KP 36 W is used as a plaster undercoat. With its moisture regulating properties it ensures an excellent indoor climate. With a grain size of 0.1mm, Baumit KlimaGlätt W provides our smoothest finish. To complete the system add an individual touch with two coats of Baumit KlimaColor. This high-quality, natural, mineral and silicate-based paint impresses with easy application and high level of opacity.



Klima fine textured system

If you want a light texture for your interior walls, we recommend Baumit Klima KP 36 W. With a grain size of 1.0mm, you can use it to create fine textures. Once you have applied Baumit Klima KP 36 W, you can then prime and paint it with two coats of Baumit KlimaColor. Available in Baumit Life colours ending with 7, 8 or 9. See page 18 for Baumit Life colours.

Klima textured system

Baumit KlimaDekor produces textured, clean and beautiful surfaces. This ready-to-use, low-emission and solvent free thin-layered finishing coat can be applied easily and quickly. Baumit Klima KP 36 W is also used as a basecoat for this system. You can then add a coat of Baumit EasyPrimer to create the perfect substrate. Its high-quality formula guarantees a high level of opacity and optimal adhesion.





Baunit Ltd

t: +44 (0)1622 710 763
e: contact@baunit.co.uk
w: baunit.co.uk

Unit 2 Westmead, New Hythe Lane,
Aylesford, Maidstone, Kent, ME20 6XJ